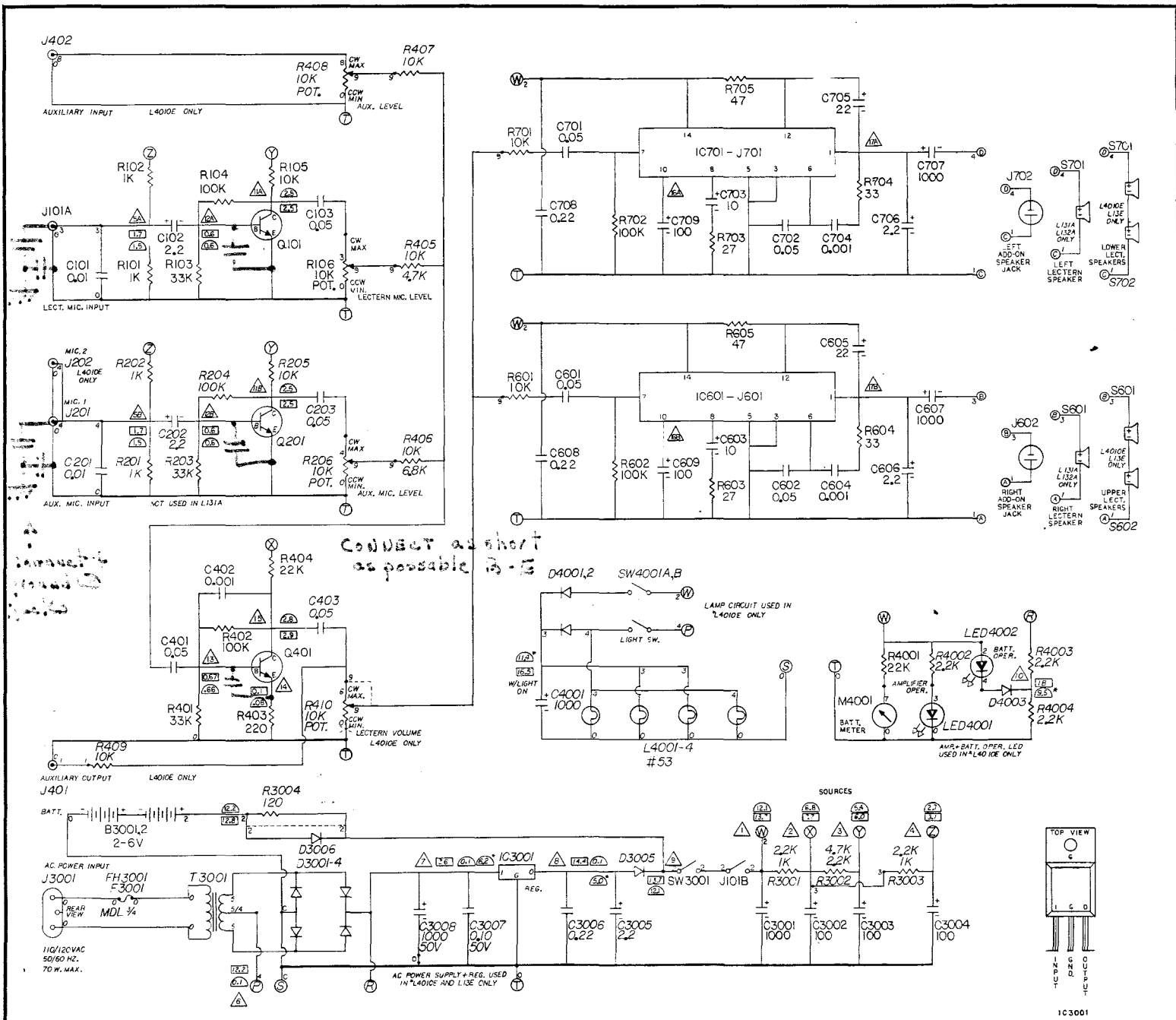
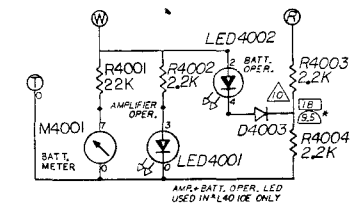
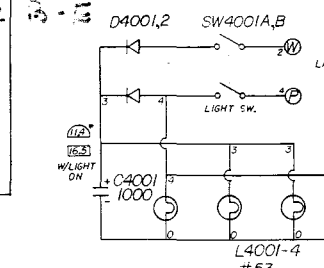


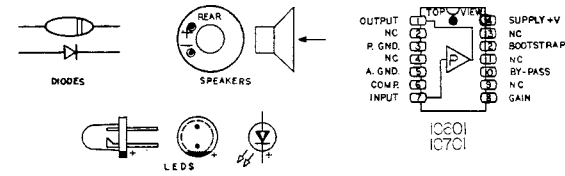
CAPS 220PF-470PF



Handwritten notes: "Construct as possible" and "CONDUCT as short as possible" with arrows pointing to specific components.



COMPONENT OUTLINE



NOTES:
 ALL RESISTORS 1/2 WATT CARBON COMPOSITION, VALUE IN OHM UNLESS OTHERWISE NOTED.
 ALL CAPACITORS 10% TOL. UNLESS OTHERWISE NOTED.
 VOLTAGES MEASURED WITH 100V OR 20,000 OHM/VOLT VOM, AC POWER-115V, FRESH BATT'S.
 CONTROLS AT MID RANGE, PANEL LIGHTS OFF, NO SIGNAL.
 VOLTAGE ON AC POWER OPERATION.
 VOLTAGE ON BATT. OPERATION.
 SEE VOLTAGE CHART FOR PIN VOLTAGE OF ALL I.C.'S

REV	DATE	DESCRIPTION
SOUND-CRAFT SYSTEMS, INC. Morrilton, Arkansas 72110		
Lecternette Models L4810E, L13E, L131A, L132A		
DATE: November 1, 1976		DWG #40

INTEGRATED CIRCUIT PIN VOLTAGES

IC PIN NUMBER			1	2	3	4	5	6	7	8	9	10	11	12	13	14
IC601 IC701	Measured D.C. Voltages	A.C. Operation	6.0 8.0	N/C	0	0	0	0.4 1.0	0.01 1.0	1.0 2.0	N/C	4.0 8.0	N/C	13.0 14.0	N/C	13.5 14.5
	Battery Operation		5.0 7.0	N/C	0	0	0	0.4 1.0	0.005 0.5	1.0 2.0	N/C	3.5 7.5	N/C	10.5 11.5	N/C	11 12