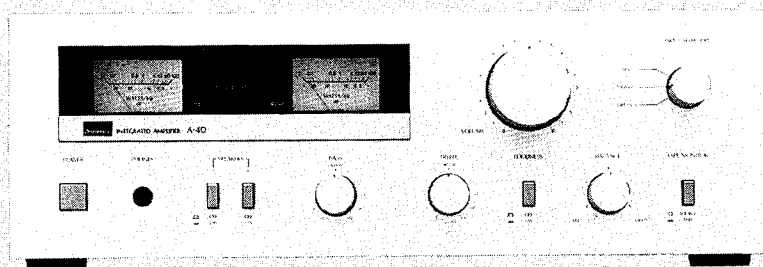


SERVICE MANUAL

INTEGRATED STEREO AMPLIFIER

SANSUI A-40



SPECIFICATIONS

Power output

Min. RMS, both channels driven, from 35 to 20,000 Hz,
with no more than 0.09 % total harmonic distortion
25 watts per channel into 8 ohms

Load impedance 8 ohms

Total harmonic distortion

. less than 0.09 % at or below rated
min. RMS power output

Frequency response (at 1 watt)

. 10 to 50,000 Hz
+0.5 dB, -2 dB

RIAA curve deviation (PHONO, 30 Hz to 15 kHz)

. +1 dB, -1 dB

Input sensitivity and impedance (1 kHz, for rated power output)

PHONO 2.5 mV/47 kilohms

(Max. input capability; 150 mV at 1 kHz, less than
0.1 % total harmonic distortion)

TAPE/AUX, TUNER, TAPE PLAY, 150 mV/47 kilohms

Output level and impedance (1,000 Hz)

TAPE REC 150 mV/47 kilohms

Hum and noise (short-circuit, A-network)

PHONO 73 dB

TAPE/AUX, TUNER, TAPE PLAY

. 90 dB

Power requirements

Power voltage 110 ~ 120, 220 ~ 240 V
(50/60 Hz)

For U.S.A. & Canada

. 120 V (60 Hz)

Power consumption

Rated consumption

. 105 watts

Dimensions 430 mm (16-15/16") W

147 mm (5-13/16") H

251 mm (9-15/16") D

Weight 5.1 kg (11.2 lbs) net

6.0 kg (13.2 lbs) packed

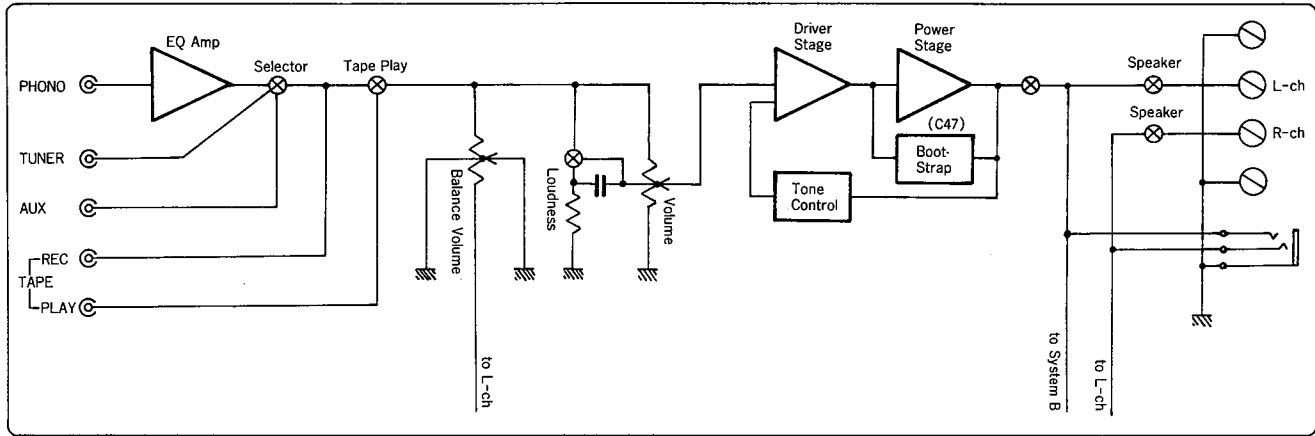
* Design and specifications subject to changes without
notice for improvements.

* In order to simplify the explanation illustrations may
sometimes differ from the originals.



SANSUI ELECTRIC CO., LTD.

1. BLOCK DIAGRAM



2. ADJUSTMENTS (See Top View on Page 3)

- Notes: 1. Room Temperature 18°C ~ 28°C (65°F ~ 83°F) 2. For this adjustment, run the unit for more than 5 minutes after the power is switched ON with its level volume minimum.

2-1. Bias Current Adjustment

Note: Before adjusting or confirming the bias current, avoid such a measurement that the power transistors are heated.

STEP	SUBJECT	MEASURE OUTPUT	ADJUST	ADJUST FOR	REMARK
1.	Bias Current (L-CH) Adj.	Voltage between emitters of TR17 and TR19	VR01 on F-3124	DC 4 mV	Before turning ON power switch, turn VR01, VR02 fully counterclockwise.
2.	Bias Current (R-CH) Adj.	Voltage between emitters of TR18 and TR20	VR02 on F-3124		In this adjustment, the bias current is converted into the voltage.

3. PARTS LOCATION & PARTS LIST

• Since some of capacitors and resistors are omitted from parts lists in this Service Manual, refer to the common parts list for capacitors & resistors which was appended previously to each Sansui Manual.

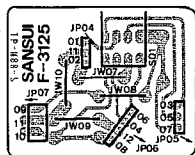
3-1. F-3124 Main Circuit Board (Stock No. 75725801) Parts List

Parts No.	Stock No.	Description	Position	Parts No.	Stock No.	Description	Position	Parts No.	Stock No.	Description	Position				
• Transistor TR01, 02 03010900, 1 2SA992 F, E 4A TR03, 04 03067400, 1 2SC1845 F, E 4A TR05, 06 03063700, 1 2SA798 F, G 2, 3C TR09, 10 03064001, 2 2SC1904 B, V 1, 3B TR11, 12 03067400, 1 2SC1845 F, E 2B TR13, 14 03086101, 2 2SD357 D, E 2B TR15, 16 03033301, 2 2SB527 D, E 2, 3B TR17, 18 03070300, 1 2SC1827 O, Y 2, 3B TR19, 20 03013400, 1 2SC769 O, Y 2, 3B TR601 03085201, 2 2SD438 E, F 1B TR602 03033601, 2 2SB560MP E, F 1C				• Zener Diode ZD601, 602 03180000 RD22E B 1B, C				R 103, 104 00179000 10Ω 1W N.I.R. 2A R 603, 604 00181800 2.7kΩ 1W 3A VR01, 02 10370400 Volume 1kΩ B Bias adj. 1B VR601 10054600 Balance Volume 250kΩ B 4C VR602 10156200 Treble Volume 100kΩ 3C (C) x 2 4B VR603 10156200 Bass Volume 100kΩ 2C (C) x 2							
• Diode D 601 03117000 RB-152 2A				C 05, 06 08602500 150pF 50V C.T. 4A C 07, 08 08602300 100pF 50V C.T. 4A C 15, 16 08601700 33pF 50V C.T. 4A C 21, 22 08602700 220pF 50V C.T. 4B C 23, 24 08603000 390pF 50V C.T. 4C C 29, 30 08602300 100pF 50V C.T. 2, 3C C 33, 34 08602100 68pF 50V C.T. 1, 3B C 35, 36 08600600 5pF 50V C.T. 1, 3B C 41, 42 08601700 33pF 50V C.T. 2, 3B C 45, 46 08601700 33pF 50V C.T. 1, 3B C 603 08680400 10000pF 500V C.C. 2A				R 77, 78 00091700 0.33Ω x 2 5W Ce.R. 2, 3B				S 601 11322400 Push Switch, Tape Monitor 4C S 602 11322400 Push Switch, Loudness 3C S 603 11322300 Push Switch, Speaker 1C 22007100 Input Terminal (Tape) 22067200 Input Terminal (Phono) 22902400 Output Terminal (A system) 22902500 Output Terminal (B system)			

• The circuit boards, F-3125, F-3126, F-3128, F-3127, F-3129 & F-3109 are not supplied as the assembled, the individual parts on the circuit boards, however are provided for orders.

3-2. F-3125 Selector Circuit Board

Conductor Side

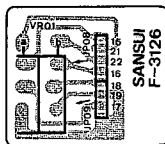


Parts List

Parts No.	Stock No.	Description
S 01	11907800	Rotary Switch, Selector

3-3. F-3126 Volume Circuit Board

Conductor Side

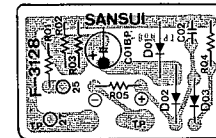


Parts List

Parts No.	Stock No.	Description
VR01	10155700	Volume 150kΩ (B) x 2

3-4. F-3128 Power Meter Drive Circuit Board

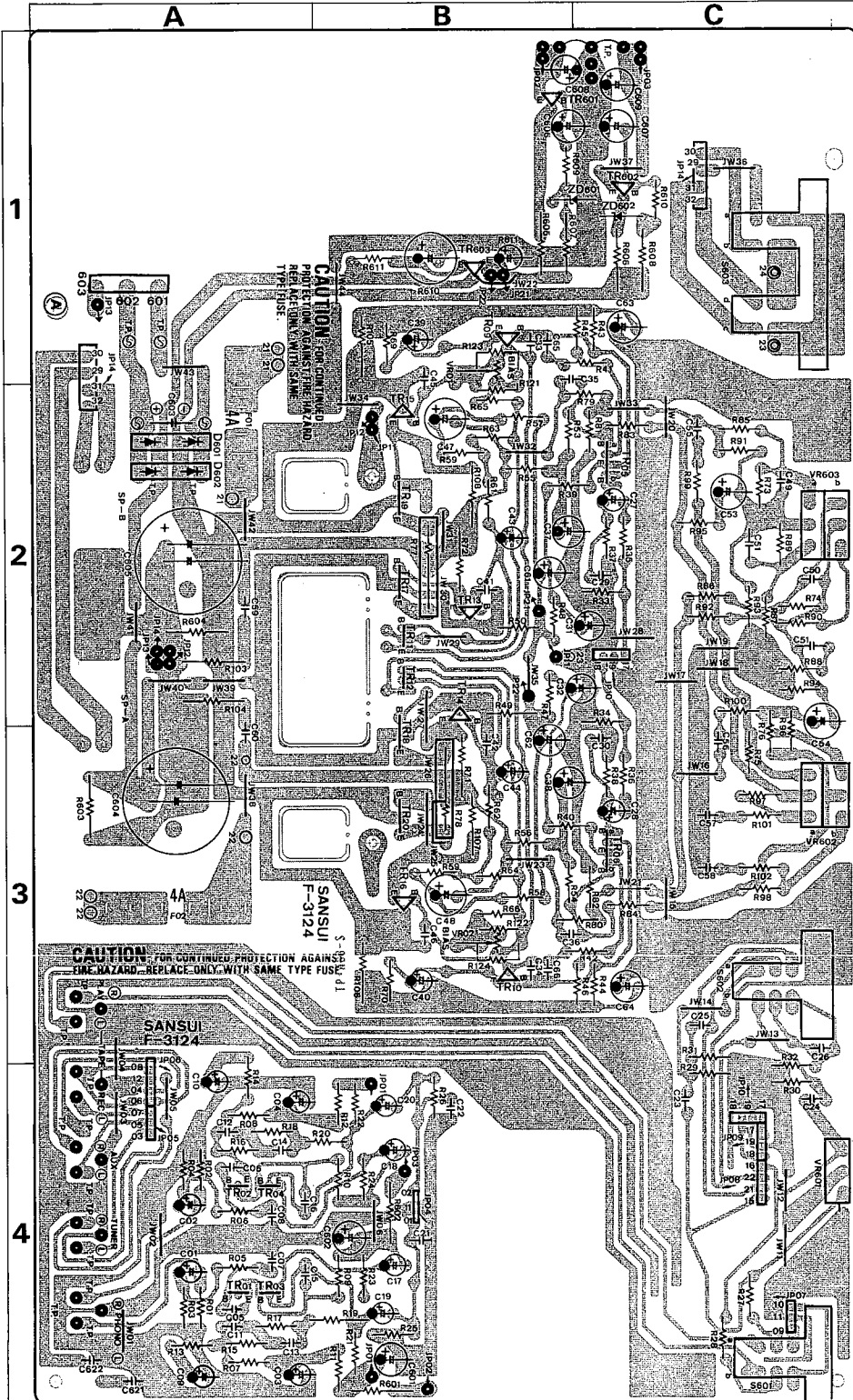
Conductor Side



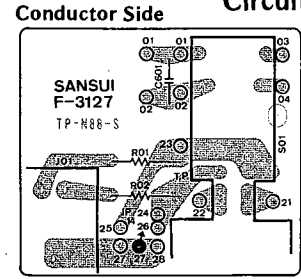
Parts List

Parts No.	Stock No.	Description
• Diode D 01, 02 03117800 1N60 D 03 03117600 1S2473D		

Conductor Side <F-3124>



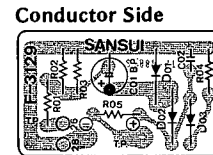
3-5. F-3127 Power Switch Circuit Board



Parts List

Parts No.	Stock No.	Description
S 01	11317900 24306000	Push Switch, power Phone Jack

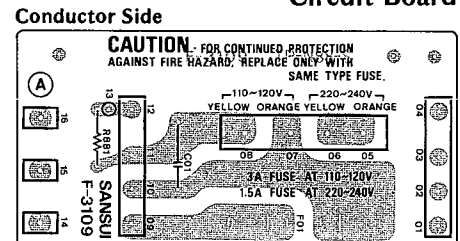
3-6. F-3129 Power Meter Drive Circuit Board



Parts List

Parts No.	Stock No.	Description
• Diode		
D 01, 02	03117800	1N60
D 03	03117600	1S2473D

3-7. F-3109 Voltage Selector Circuit Board



Parts List

Parts No.	Stock No.	Description
F 01	04322300 04322600	AC Fuse 1.5A /250V AC Fuse 3A /125V

Note: As the stock number in the parts list on this service manual is indicated in 8 digit to differ from ordinary 7 digit, please be carefull when ordering parts.

• Abbreviations

C.R.	Carbon Resistor	E.L.	Low Leak Electrolytic Capacitor
S.R.	Solid Resistor	E.B.	Bi-Polar Electrolytic Capacitor
Ce.R.	Cement Resistor	E.BL.	Low Leak Bi-Polar Electrolytic Capacitor
M.R.	Metal Film Resistor	Ta.C.	Tantalum Capacitor
F.R.	Fusing Resistor	F.C.	Film Capacitor
N.I.R.	Non-Inflammable Resistor	M.P.	Metallized Paper Capacitor
C.C.	Ceramic Capacitor	P.C.	Polystyrene Capacitor
C.T.	Ceramic Capacitor, Temperature Compensation	G.C.	Gimmick Capacitor
E.C.	Electrolytic Capacitor		

