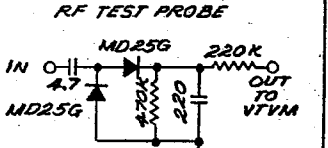
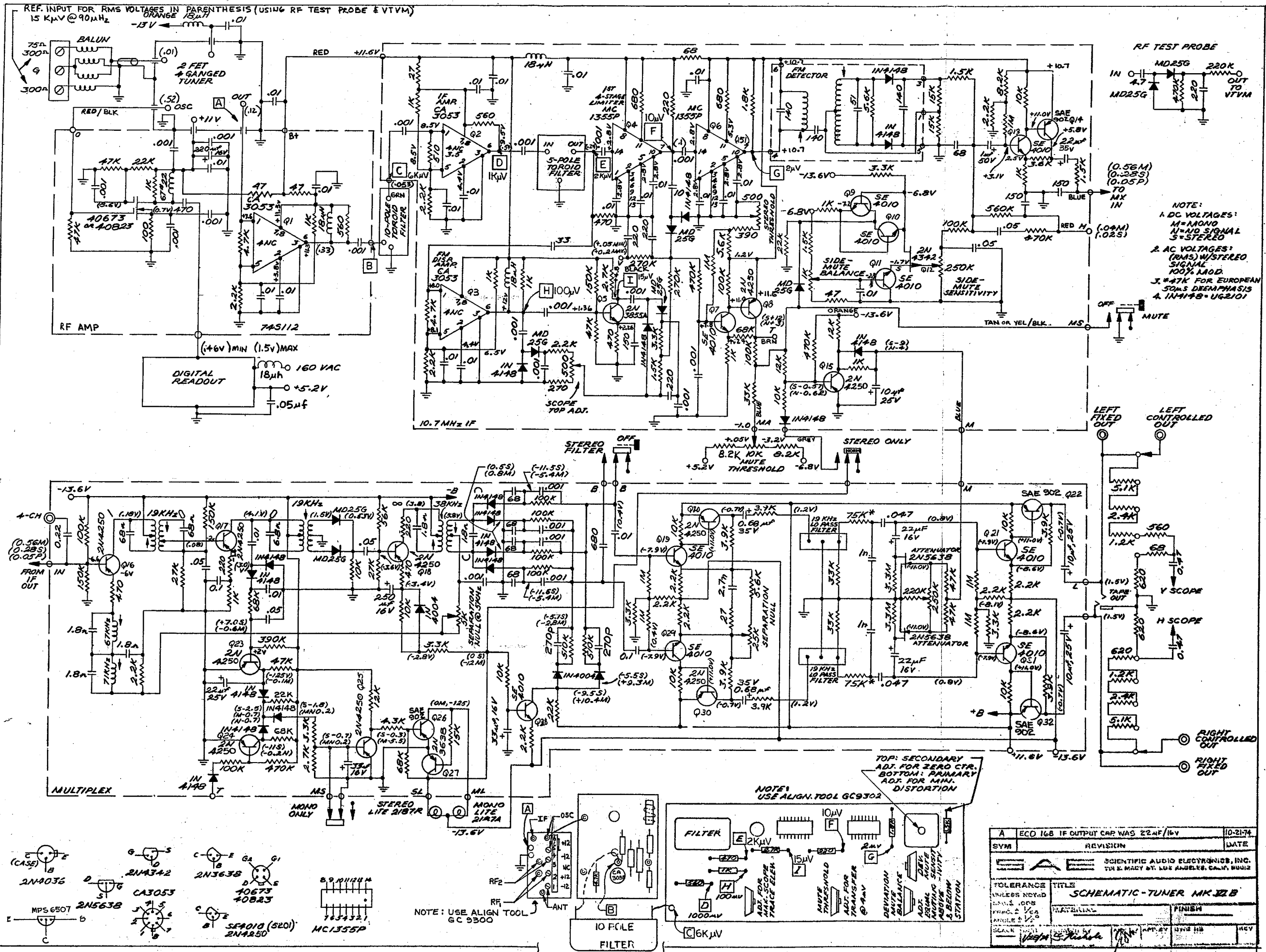


mk 21B



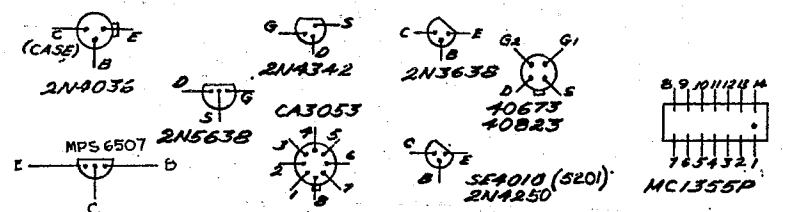
NOTE:

1. DC VOLTAGES:
M=MONO
N=AUD SIGNAL
S=STEREO

2. AC VOLTAGES:
(RMS) W/STEREO SIGNAL
100% MOD.

3. *47K FOR EUROPEAN
SONAS DEEMPHASIS

4. IN4148 = UG2101



A	ECD 168 IF OUTPUT CAP WAS 22nF/16V	10-21-74
SYM	REVISION	DATE
SCIENTIFIC AUDIO ELECTRONICS, INC. 701 E. MARY ST. LOS ANGELES, CALIF. 90012		
TOLERANCE UNLESS NOTED	TITLE	FINISH
DATE	DESIGNED BY	APP. BY
1974	W. H. H. H.	W. H. H. H.
SCHEMATIC - TUNER MK 21B		