

Goodmans



GCD808

Service Manual - GCD808

Bill Of Materials

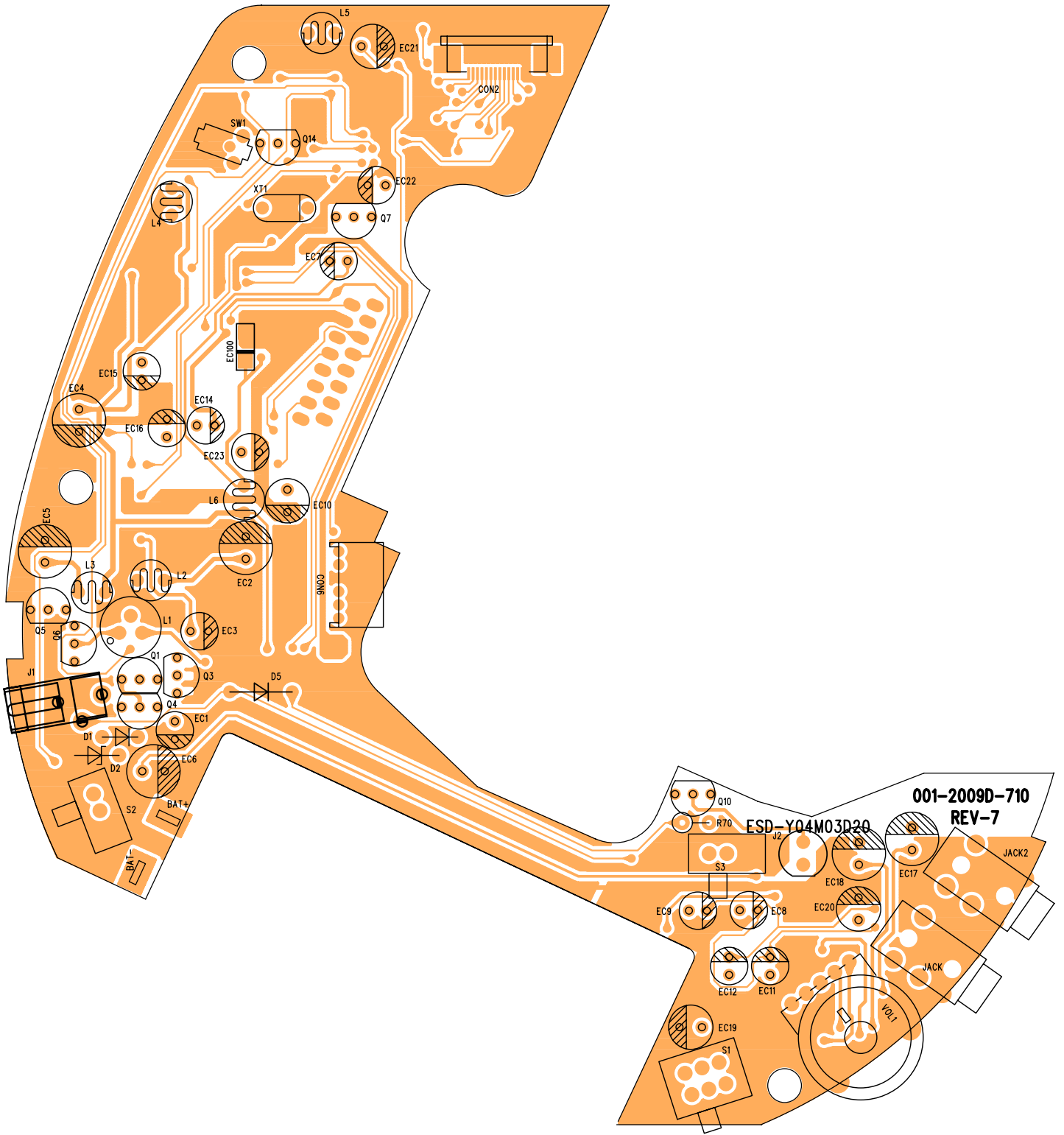
NO	ITEM	DESCRIPTION	QTY	LOCATION
1	001-2009D-710	P.C.B Main Board	1	
2	001-2049S-D70	P.C.B KEY BOARD	1	
3	002-06575-D07	I.C BH6575FV	1	IC201
4	002-04453-D07	I.C BH4453F	1	IC301
5	002-24393-G00	I.C BU24393-8Z	1	IC401
6	002-09532-H00	I.C BU9532KS	1	IC101
7	003-3199Y-H03	TRANSISTOR KTC3199Y TO-92S	1	Q10
8	003-1266Y-000	TRANSISTOR KTA1266Y	1	Q7
9	003-3203Y-D00	TRANSISTOR STC3203Y	3	Q3.4.14
10	003-1271Y-A03	TRANSISTOR KTA1271Y	1	Q1
11	003-00114-S07	TRANSISTOR DTC114TUA SMD	3	Q8.9.13
12	003-00124-S07	TRANSISTOR DTA124EUA SMD	1	Q2
13	003-04115-H00	TRANSISTOR 2SC4115 NPN TO-92S	2	Q6.5
14	004-04148-000	DIODE IN4148	2	D4.3
15	004-04001-000	DIODE IN4001	1	D1
16	004-05818-000	DIODE IN5818	1	D5
17	005-00062-A00	ZENER DIODE 1/2W 6.2V	1	D2
18	006-16934-000	RESONATOR 16.9344MHz (3Pin)	1	XT1
19	008-80337-C00	LCD DISPLAY 80337TR	1	
20	010-A0106-000	CHOKE COIL 10uH 2Pin 4x6mm	3	L3.5.6
21	010-A0107-307	CHOKE COIL 100uH 3Pin 5x7mm	1	L1
22	010-A0107-200	CHOKE COIL 100uH 2Pin 4x6mm	1	L4
23	010-A0337-200	CHOKE COIL 330uH 2Pin 4x6mm	1	L2
24	011-A068A-200	RESISTOR 1/4W 6.8 OHM $\pm 5\%$	1	R70.
25	011-B020A-200	RES CHIP 2 OHM $\pm 5\%$ 0603	1	R58
26	011-B100A-200	RES CHIP 10 OHM $\pm 5\%$ 0603	1	R7

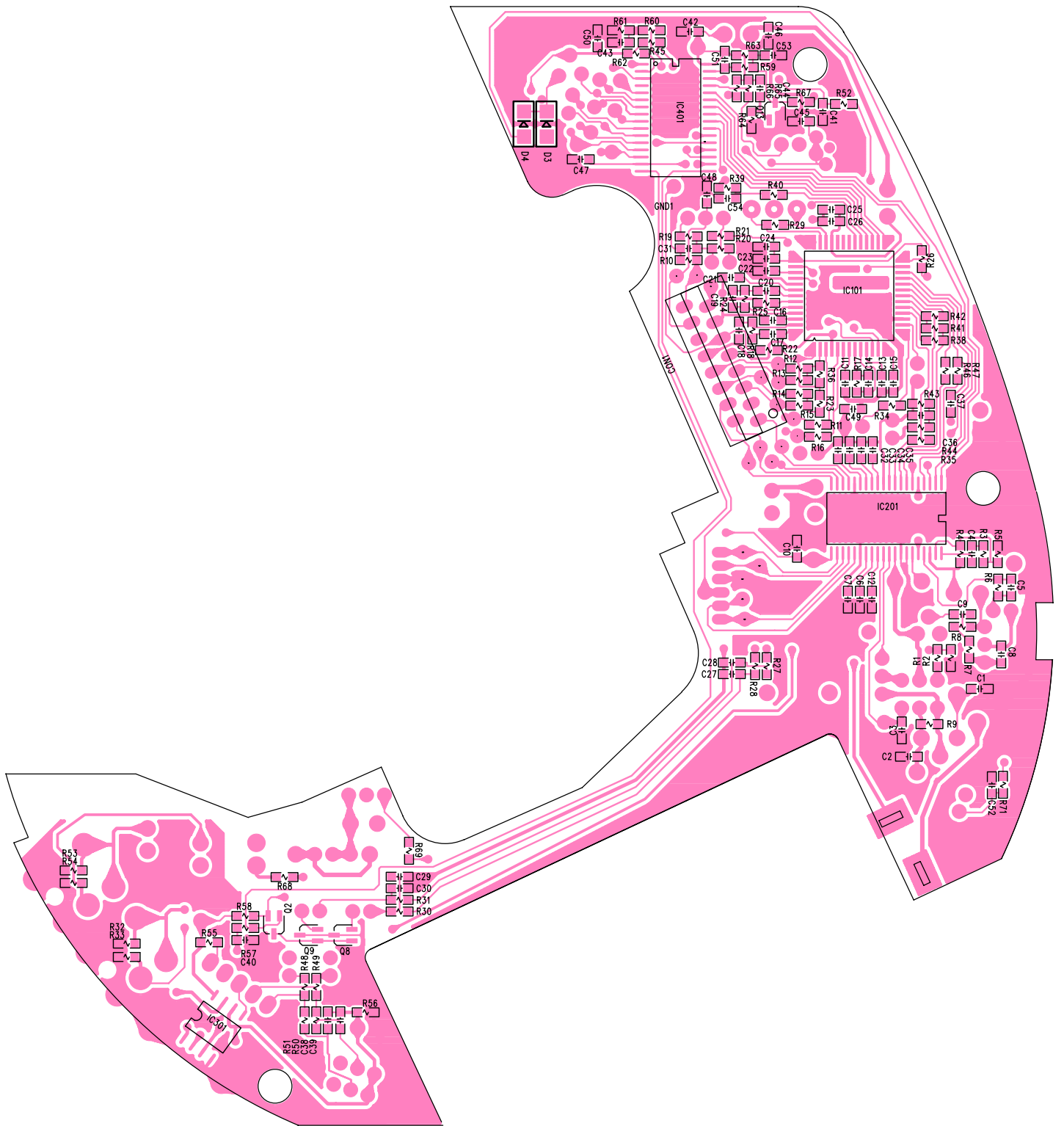
NO	ITEM	DESCRIPTION	QTY	LOCATION
27	011-B101A-200	RES CHIP 100 OHM \pm 5% 0603	2	R52.6
28	011-B102A-200	RES CHIP 1K OHM \pm 5% 0603	15	R21.27.28.30.31.8. 18.53.54.68.39.40.71.45.59
29	011-B103A-200	RES CHIP 10K OHM \pm 5% 0603	3	R62.9.(KEY:1)
30	011-B104A-200	RES CHIP 100K OHM \pm 5% 0603	8	R63.20.1.66.60.61.32.33
31	011-B105A-200	RES CHIP 1M OHM \pm 5% 0603	1	R29
32	011-B123A-200	RES CHIP 12K OHM \pm 5% 0603	2	R5.35
33	011-B154A-200	RES CHIP 150K OHM \pm 5% 0603	1	R17
34	011-B182A-200	RES CHIP 1.8K OHM \pm 5% 0603	1	(KEY:1)
35	011-B183A-200	RES CHIP 18K OHM \pm 5% 0603	5	R12.13.14.15.25
36	011-B184A-200	RES CHIP 180K OHM \pm 5% 0603	1	R57
37	011-B225A-200	RES CHIP 2.2M OHM \pm 5% 0603	2	R23.36
38	011-B222A-200	RES CHIP 2.2K OHM \pm 5% 0603	1	(KEY:1)
39	011-B200A-200	RES CHIP 20K OHM \pm 5% 0603	1	R64
40	011-B223A-200	RES CHIP 22K OHM \pm 5% 0603	3	R46.2.69
41	011-B273A-200	RES CHIP 27K OHM \pm 5% 0603	3	R4.11.16
42	011-B332A-200	RES CHIP 3.3K OHM \pm 5% 0603	3	R50.51.(KEY:1)
43	011-B333A-200	RES CHIP 33K OHM \pm 5% 0603	2	R47.43
44	011-B334A-200	RES CHIP 330K OHM \pm 5% 0603	1	R42
45	011-B047A-200	RES CHIP 4.7 OHM \pm 5% 0603	3	R19.26.22
46	011-B471A-200	RES CHIP 470 OHM \pm 5% 0603	1	R34
47	011-B472A-200	RES CHIP 4.7K OHM \pm 5% 0603	2	R44.(KEY:1)
48	011-B473A-200	RES CHIP 47K OHM \pm 5% 0603	3	R38.56.65
49	011-B683A-200	RES CHIP 68K OHM \pm 5% 0603	1	R67
50	011-B753A-200	RES CHIP 75K OHM \pm 5% 0603	2	R24.55
51	011-B822A-200	RES CHIP 8.2K OHM \pm 5% 0603	3	R3.48.49
52	011-B913A-200	RES CHIP 91K OHM \pm 5% 0603	1	R41
53	011-B910A-200	RES CHIP 91 OHM \pm 5% 0603	1	R10
54	012-4106B-300	ELECT CAP 10uF 10V \pm 20% 4x5mm	2	EC3.1
55	012-4224F-300	ELECT CAP 0.22uF 50V \pm 20% 4x5mm	1	EC15
56	012-4335F-300	ELECT CAP 3.3uF 50V \pm 20% 4x5mm	1	EC14
57	012-4475F-300	ELECT CAP 4.7uF 50V \pm 20% 4x5mm	5	EC8.9.11.12.16
58	012-4476C-300	ELECT CAP 47uF 16V \pm 20% 4x5mm	1	EC21

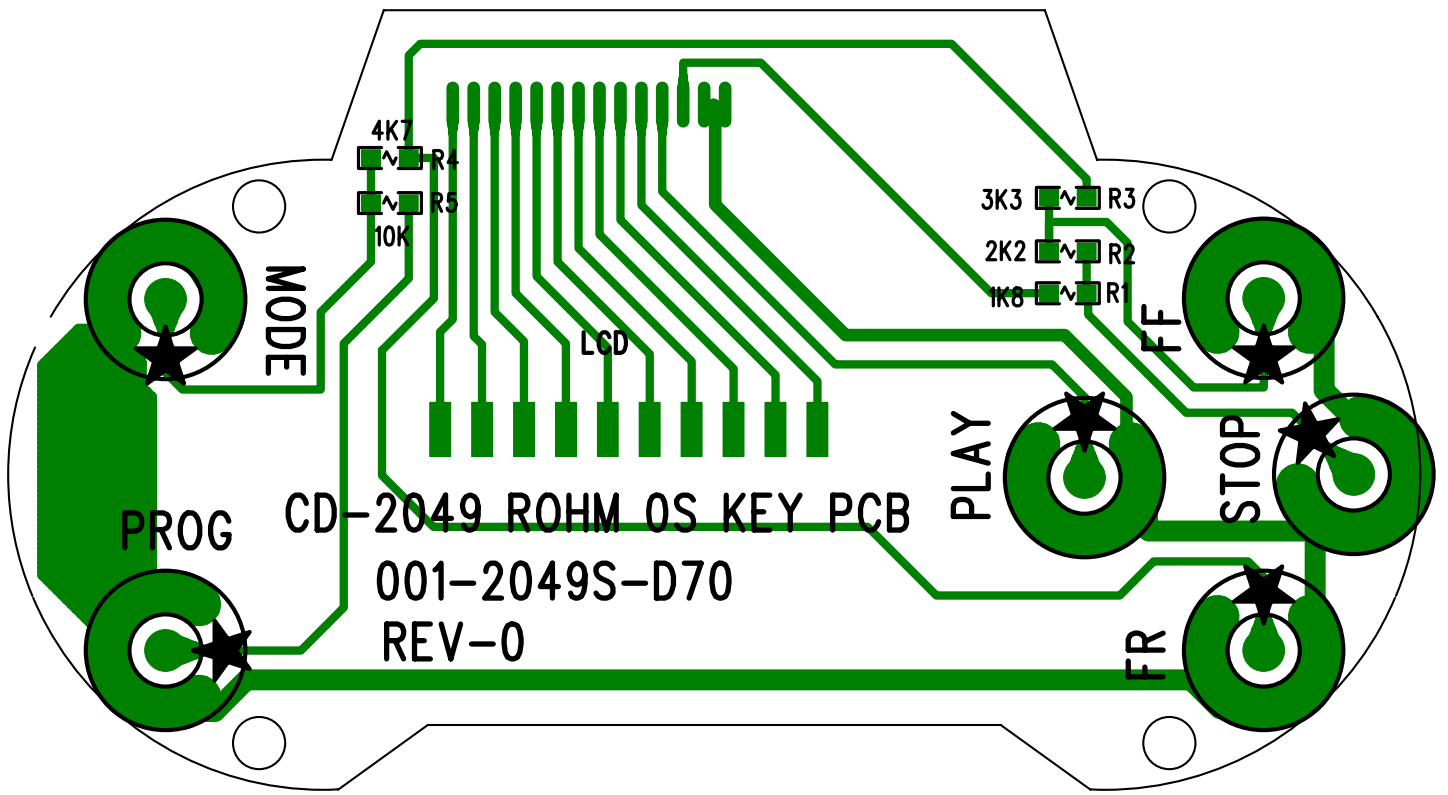
NO	ITEM	DESCRIPTION	QTY	LOCATION
59	012-6107C-300	ELECT CAP 100uF 16V ±20% 5x5mm	6	EC19.20.22.7.10.23
	012-5227A-300	ELECT CAP 220uF 6.3V ±20% 6x5mm	5	EC17.18.2.5.4
60	012-8227B-300	ELECT CAP 220uF 10V ±20% 8x5mm	1	EC6
	013-D107M-50B	Tantal Chip CAP 100uF 4V +-20% "B-Size"	1	C?
61	014-B102C-500	CHIP CER CAP 0.001uF 50V ±10% 0603	5	C27.28.29.30.5
62	014-B103C-500	CHIP CER CAP 0.01uF 50V ±10% 0603	2	C48.54
63	014-B104C-500	CHIP CER CAP 0.1uF 50V ±10% 0603	22	C1.2.3.6.9.10.13.15.36.37.49. 25.45.42.46.50.43.53.52.31.24. 51
64	014-B105C-500	CHIP CER CAP 105PF 50 ±10% 0603	7	C26.23.22.16.44.40.7
65	014-B121C-500	CHIP CER CAP 120PF 50V ±10% 0603	1	C14
66	014-B150C-500	CHIP CER CAP 15PF 50V ±10% 0603	1	C41
67	014-B151C-500	CHIP CER CAP 150PF 50V ±10% 0603	2	C21.19
68	014-B222C-500	CHIP CER CAP 0.0022uF 50V ±10% 0603	1	C20
69	014-B223C-500	CHIP CER CAP 0.022uF 50V ±10% 0603	5	C32.33.34.35.4
70	014-B470C-500	CHIP CER CAP 47PF 50V ±10% 0603	1	C8
71	014-B471C-500	CHIP CER CAP 470PF 50V ±10% 0603	2	C12.11
72	014-B682C-500	CHIP CER CAP 0.0068uF 50V ±10% 0603	1	C17
73	014-B820C-500	CHIP CER CAP 82PF 50V ±10% 0603	1	C18
74	014-B823C-500	CHIP CER CAP 0.082uF 50V ±10% 0603	2	C38.39
75	023-A0030-RD0	LED 3mm RED	1	
76	025-DS200-000	Detector Switch DS-20 4Pin Small	1	
77	025-SS120-450	Slide Switch SS-12D01 1P2T VG-4.5mm	1	
78	025-SK120-030	Side Knob Slide Switch SK12D03 1P2T VG-3mm	1	
79	025-SK220-030	Side Knob Slide Switch SK22D03 2P2T VG-3mm	1	
80	026-010KA-A14	VOL ROTARY 10KA 1401-A101mm	1	2005
81	028-ST006-B51	3.5mm LINE OUT JACK ST-006	1	
82	028-ST006-B52	3.5mm Headphone JACK ST-006	1	
83	031-20390-140	14P FFC Flexible Cable	1	
84	036-A0150-06S	Connector 6Pin Socket P=1.5mm 180° Small	1	
85	036-D0100-161	Connector 16Pin Socket P=1.0mm 90°	1	
86	036-G0050-140	Connector 14Pin Socket P=0.5mm SMD W/Lock	1	
87	038-00300-10A	Zebra Paper 10Pin L=30mm P=2mm	1	

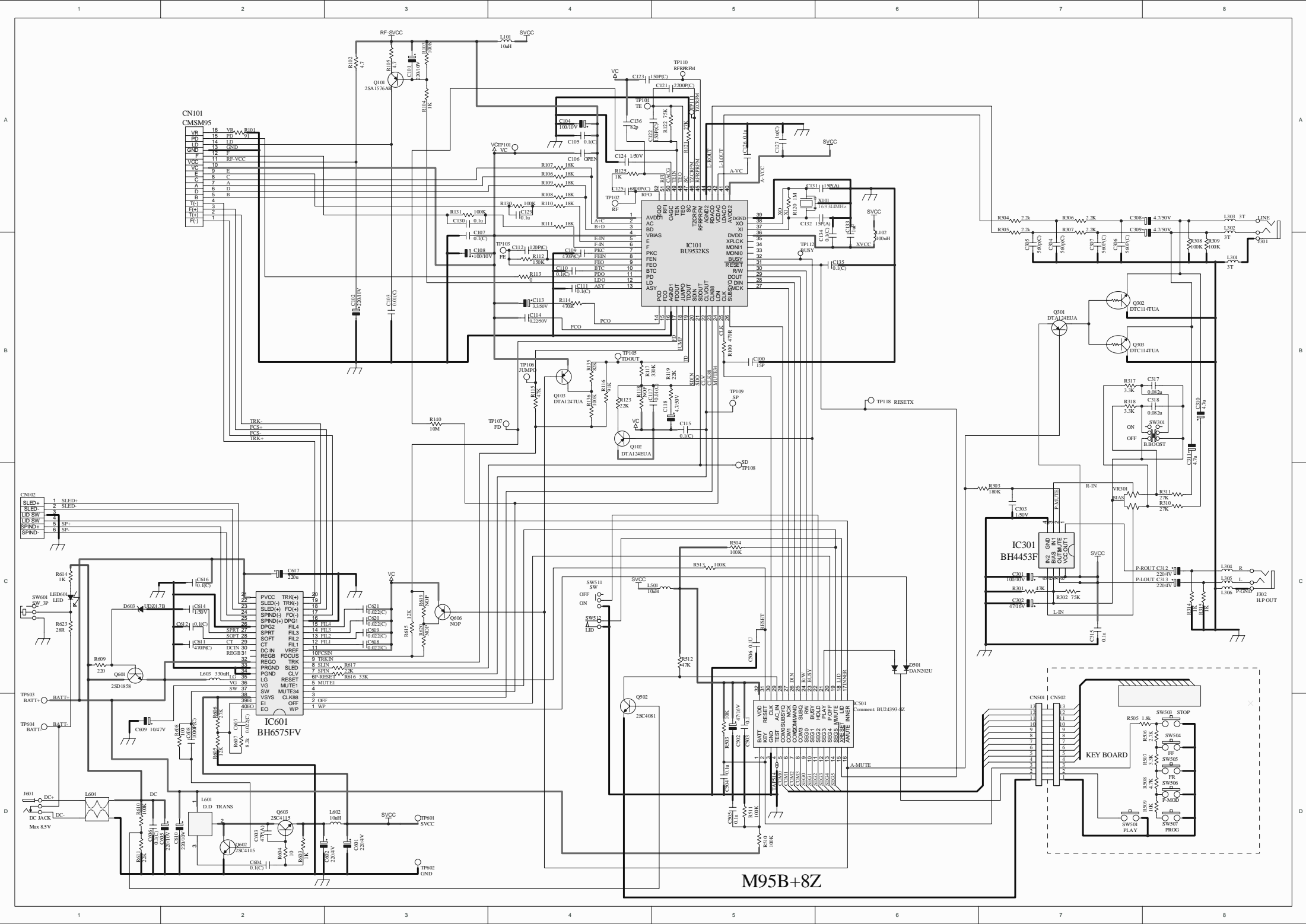
NO	ITEM	DESCRIPTION	QTY	LOCATION
88	048-DC480-001	DC JACK DC-480	1	
89	050-TA005-16P	Tact Switch 6mm W/Pin 250g	6	
90	052-0TW60-350	3.5mm Stereo Earphone TW-60	1	ACCORDING TO ORDER
91	201-EI350-062	AC Adaptor EI-35 230V 50Hz 4.5V DC 600mA "CE"	1	ACCORDING TO ORDER
92	201-2323A-080	CAR DC CHARGER-ADAP TOR 12-24V TO4.5V	1	ACCORDING TO ORDER
93	203-2009S-C90	CD DECK "SAMSUNG" CMS-M97DG6	1	
94	209-21000-S00	OPEN SPRING	1	
95	209-20490-P00	DOOR SPRING	1	
96	211-2009A-000	BATTERY PLATE "+.-"	1	
97	211-2009B-000	BATTERY PLATE "-"	1	
98	211-2009C-000	BATTERY PLATE "+"	1	
99	225-00068-100	Rubber Sponge D=6.8x1mm	2	
100	225-20490-A00	DOUBLE-TAPE	1	
101	225-10020-A00	LAMP BUSHING	1	
	225-01107-200	RUBBER SPONGE 11x7x2mm	1	
102	234-KB017-03B	SCREW KB 1.7x3 Black	4	FOR KEY
103	234-PA020-08B	SCREW PA 2x8 Black	6	FOR MAIN UNIT
104	240-20280-0GN	CD CUSHION RUBBER GREEN	3	
105	247-20050-080	Ribbon For Battery Box L=80mm 80x6.5mm	1	
107	301-0C067-080	POLYBAG 6-3/4x8"T=0.04mm	1	
108	303-2008A-A10	POLYFOAM	1	ACCORDING TO ORDER
109	304-2049A-A10	GIFT BOX	1	
110	305-2049A-A10	INSTRUCTION MANUAL	1	
111	306-20490-A05	CARTON 1/5	1	
112	307-CD020-A00	CD PAPER CARD FOR CD	1	
113	308-2049A-000	PVC MODEL PLATE	1	
114	401-2049B-100	TOP-COVER ABS (0SEC)	1	
115	401-2009B-100	BOTTOM-COVER ABS	1	
116	401-2009M-100	MIDDLE-COVER ABS	1	
117	407-2009A-100	BATTERY DOOR ABS	1	

NO	ITEM	DESCRIPTION	QTY	LOCATION
118	411-2049A-500	LCD-LENS PVC CLEAR	1	
119	411-2009F-100	TACT-SWITCH-CAP ABS	1	
120	458-2049C-100	KEY-KNOB ASS'Y ABS	1	
121	458-2006B-1NL	HOLD/BASS KNOB ABS Natural	2	
122	459-2009A-1BK	OPEN KNOB ABS	1	
123	483-2049A-100	ORNAMENT	1	









M95B+8Z