

**TEMPLATE
FOR GARRARD
AUTO TRANSCRIPTION
TURNTABLE LAB. 80**

CABINET SPACE ABOVE TOP OF MOTOR BOARD 5 1/2" (139.7 mm). IF TOP OF CABINET DOES NOT OPEN ALLOW EXTRA 4 1/2" (107.9 mm) HEIGHT TO INSERT AND WITHDRAW AUTO RECORD SPINDLE. CABINET SPACE BELOW TOP OF MOTOR BOARD 3 1/2" (88.9 mm).

**STEREO
WIRING DIAGRAM**
FOR MONOPHONIC
CARTRIDGES USE R H CHANNEL

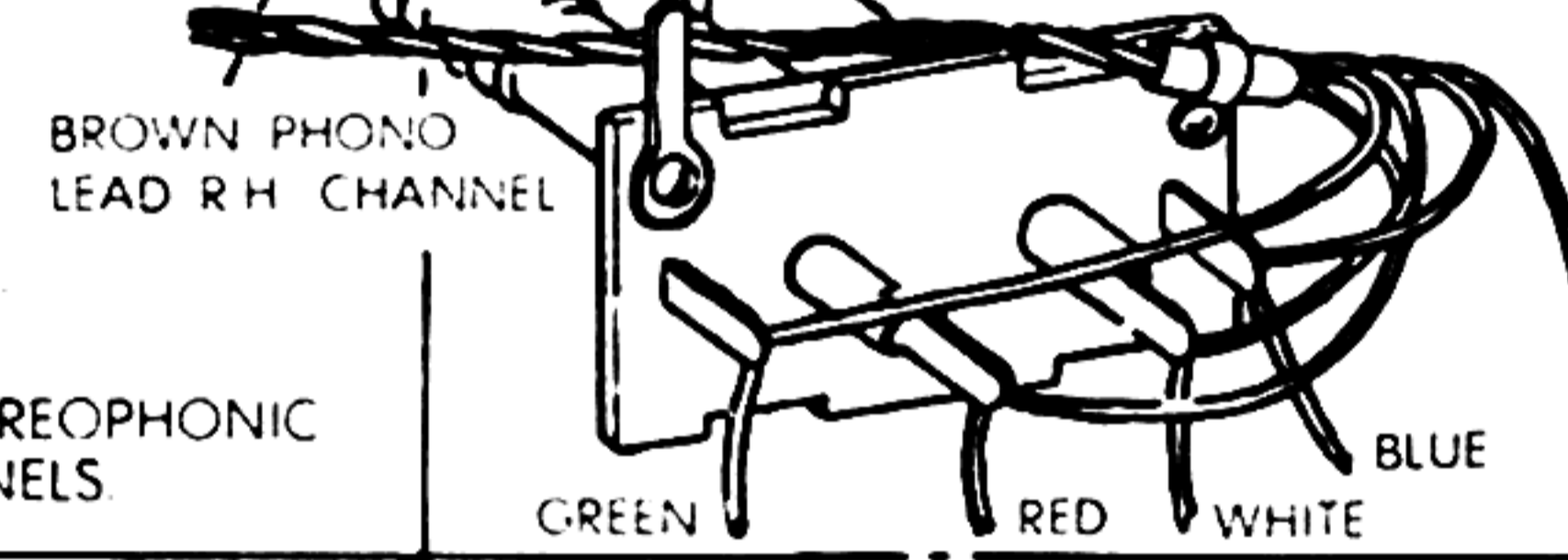
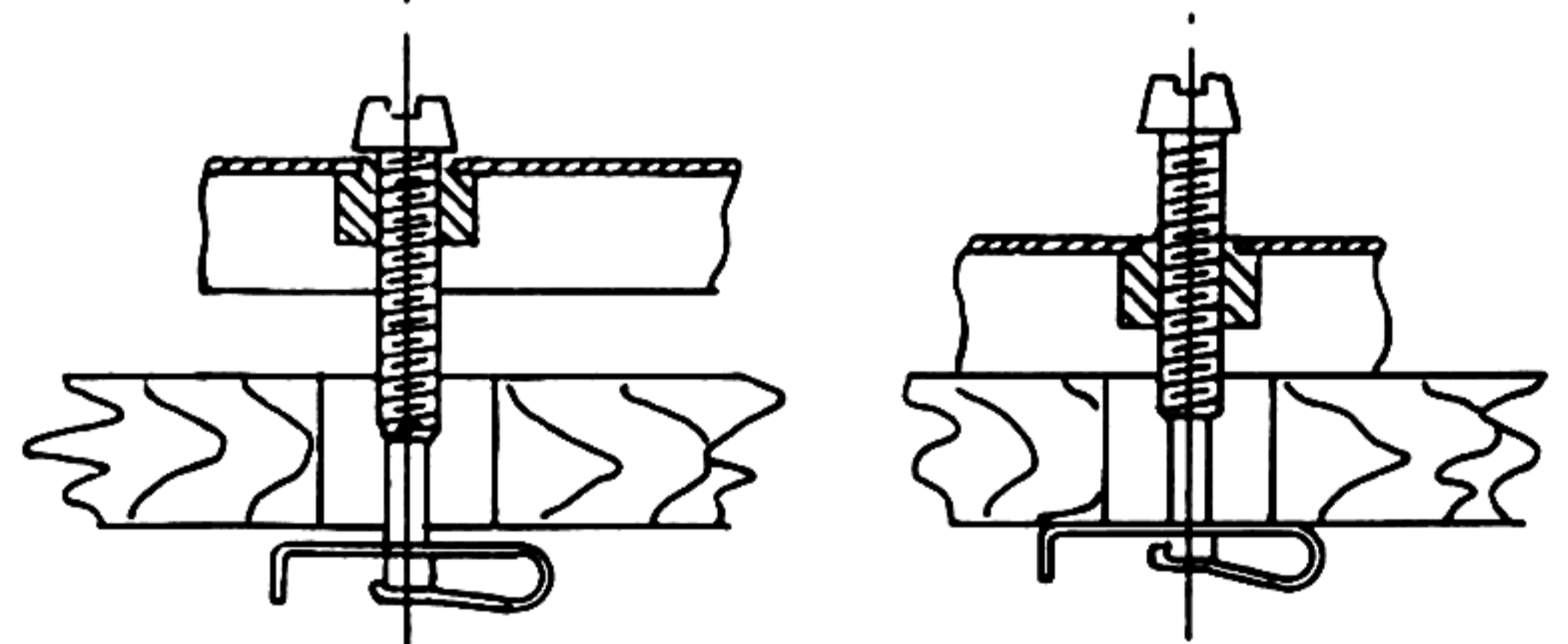
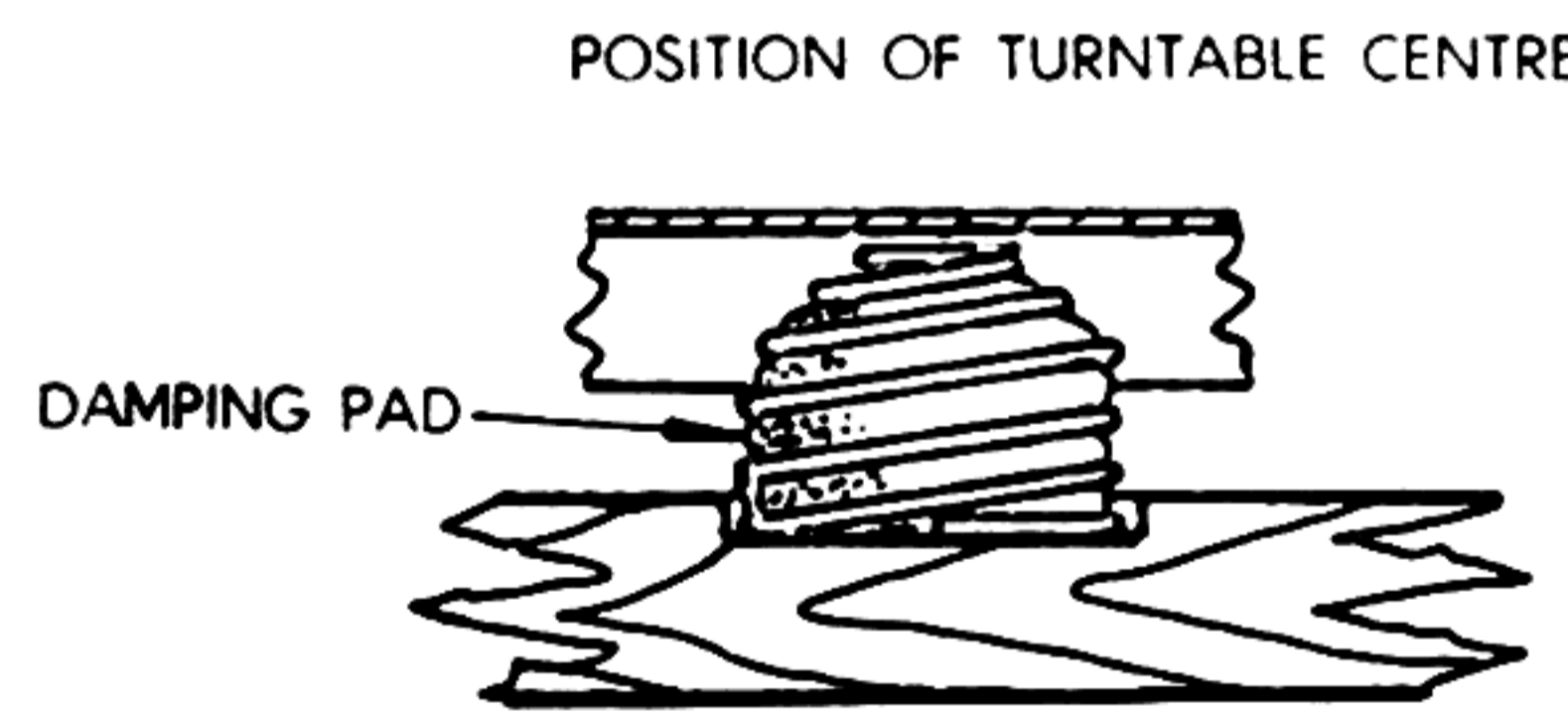


DIAGRAM OF WIRING CONNECTIONS WHEN
TWIN PHONO SOCKET IS FITTED.

BLACK PICKUP LEAD TO EARTH
TAG ON MUTING SWITCH

FOR MONOPHONIC REPRODUCTION WHEN A STEREOPHONIC
CARTRIDGE IS FITTED. PARALLEL THE TWO CHANNELS



TRANSIT SCREW IN
PLAYING POSITION TRANSIT SCREW IN
TRANSPORT POSITION

CLIP MUST BE VERTICAL
WHEN ASSEMBLING UNIT TO MOTOR BOARD

SUSPENSION AND TRANSIT DETAILS

2 HOLES 7/8" DIA. (14.3 mm)
TRANSIT SCREW HOLES

OUTLINE OF UNIT

FRONT

RECOMMENDED SIZE OF MOTOR BOARD

GARRARD ENGINEERING LIMITED SWINDON WILTS ENGLAND