

# **AMC**

**SERVICE MANUAL**

**1100**  
**STEREO PREAMPLIFIER**

## CONTENTS

DESCRIPTION	PAGE
SPECIFICATIONS .....	3
REAR PANEL CONNECTIONS/FRONT PANEL CONTROLS .....	4
SCHEMATIC DIAGRAM .....	5-7
PCB LAYOUT.....	8-10
MAINS WIRING INSTRUCTION .....	11
SERVICE PARTS LIST .....	12-13

## SPECIFICATIONS

### LINE LEVEL INPUTS (Aux, CD, Tuner, Multimedia, DVD and Tape In)

Input impedance (R and C) .....	20 Kohm//450pF
Input sensitivity 1KHz (ref. 1V) .....	170 mV
THD+SMPTE+IHF I.M. ....	<0.003 %
Frequency response 20Hz-20KHz .....	+/- 0.3 dB
-3dB .....	5Hz/110KHz
Signal to noise ratio, "A" WTD (ref. 0.5V) .....	>97 dB
Separation 20Hz-20KHz .....	>80 dB
Maximum input level .....	>10 V

### LINE LEVEL OUTPUTS

Output impedance	Pre Out .....	220 ohm
	Phones .....	100 ohm
Maximum output level	Pre Out .....	>8.5 V
	Phones (8 ohm load) .....	>250 mV
	(open circuit) .....	>9 V

### TONE CONTROLS

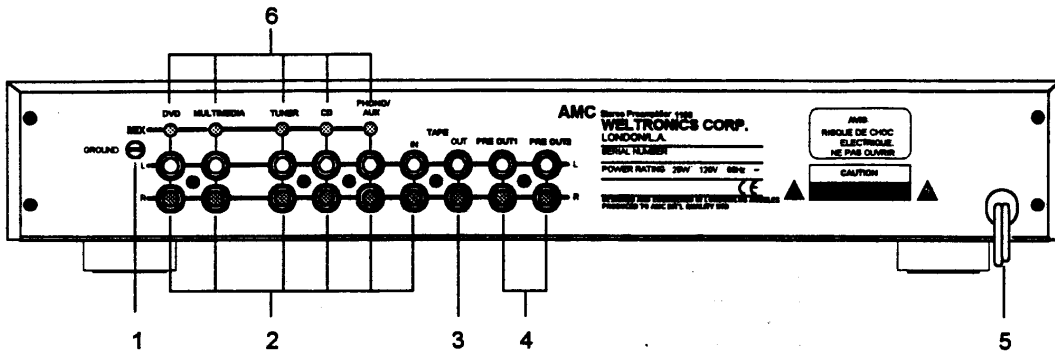
Bass at 100Hz .....	+8.5/-9.0 dB
Treble at 10KHz .....	+7.5/-8.2 dB

### OTHERS

Dimensions (WxHxD) .....	430x82x288 mm
Net weight .....	4.2 Kg
Shipping weight (4 pieces) .....	18.7 Kg

# REAR PANEL CONNECTIONS/FRONT PANEL CONTROLS

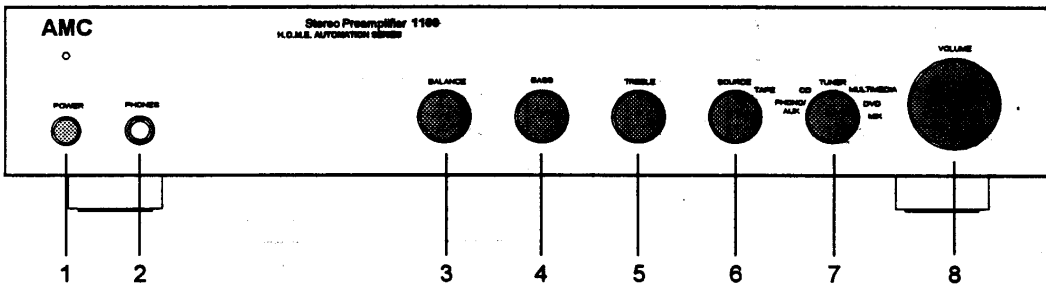
## REAR PANEL



- 1. GROUND TERMINAL (READY FOR PHONO)
- 2. INPUTS
- 3. TAPE OUTPUT

- 4. PRE OUT1/PRE OUT2
- 5. AC LINE CORD
- 6. MIX INPUT SENSITIVITY CONTROLS

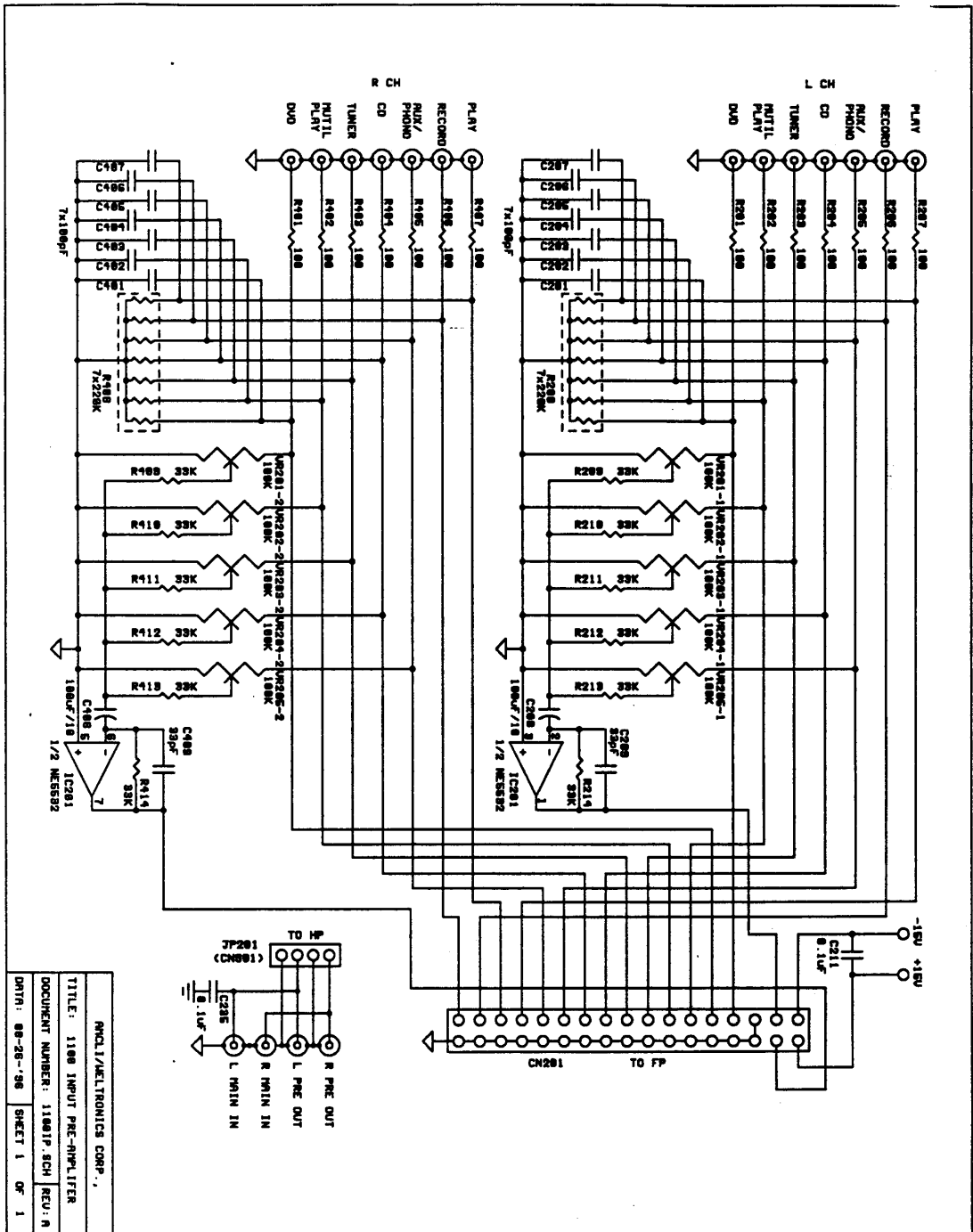
## FRONT PANEL



- 1. POWER SWITCH
- 2. PHONES
- 3. BALANCE CONTROL
- 4. BASS CONTROL

- 5. TREBLE CONTROL
- 6. TAPE MONITOR SWITCH
- 7. INPUT SELECTION SWITCH
- 8. VOLUME CONTROL

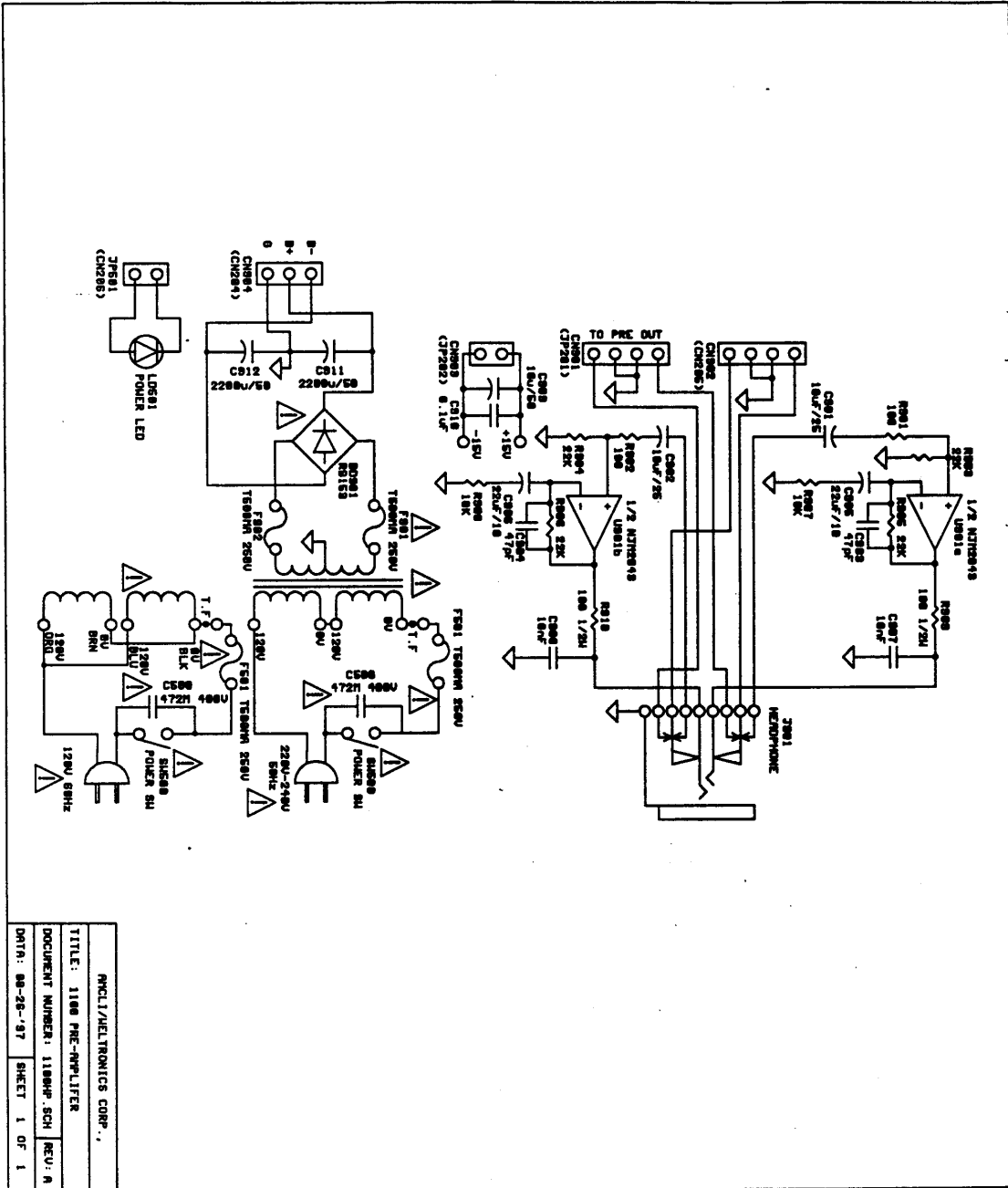
# SCHEMATIC DIAGRAM (INPUT)



RMC/L/ELECTRONICS CORP.  
 TITLE: 1100 INPUT PRE-AMPLIFIER  
 DOCUMENT NUMBER: 1100IP\_SCH REV: R  
 DATE: 08-26-'98 SHEET 1 OF 1

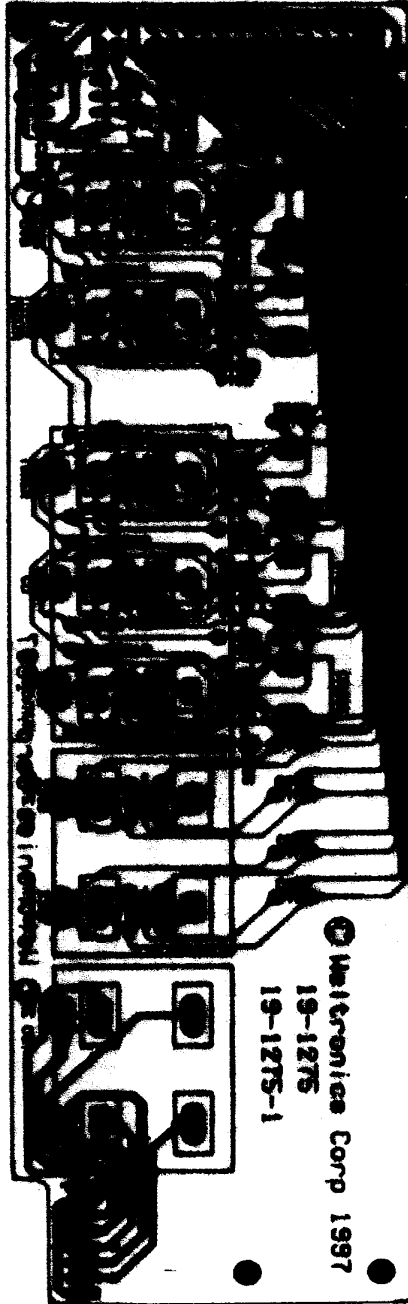


# SCHEMATIC DIAGRAM (MAINS AND PHONES)



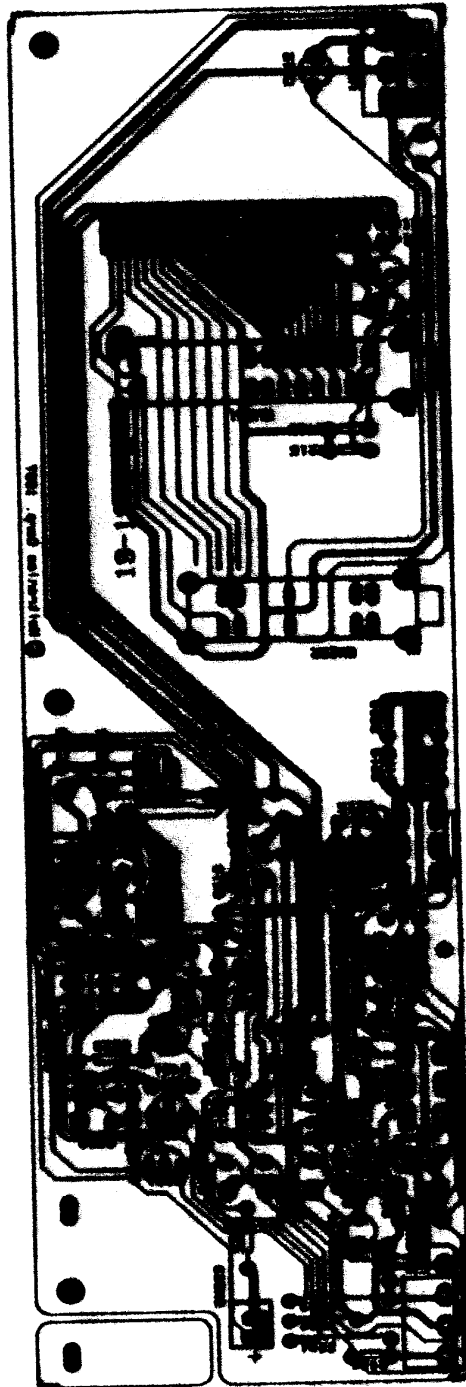
RNCII/ELTECHNICS CORP.	
TITLE: 1100 PRE-AMPLIFIER	
DOCUMENT NUMBER: 1100HP SCH REV: R	
DATA: 88-28-'87	SHEET 1 OF 1

**PCB LAYOUT: INPUT MODULE (90-1275-1)**

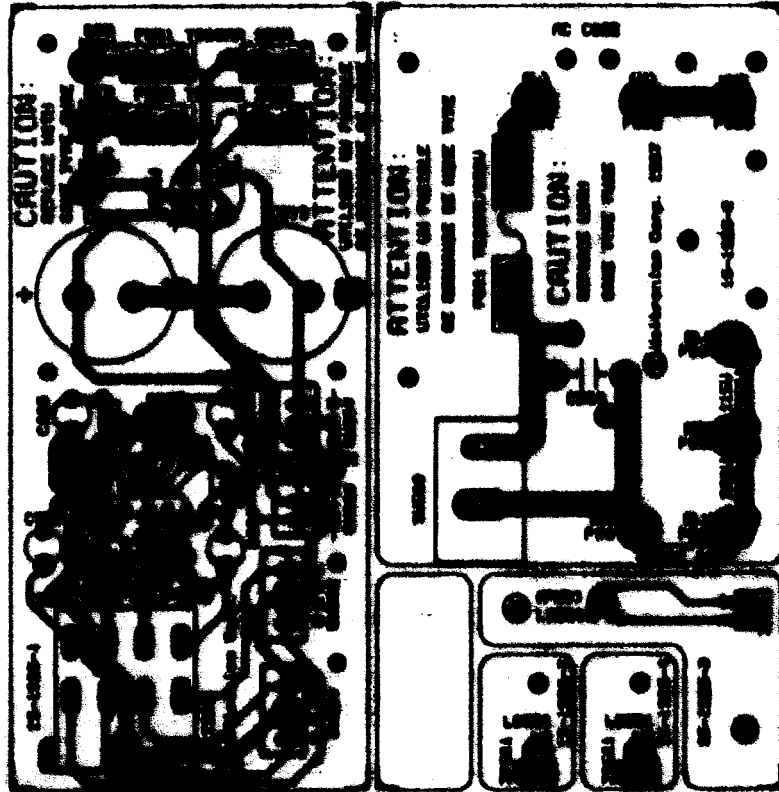




**PCB LAYOUT: (PREAMP AND TONE CONTROL MODULE)**



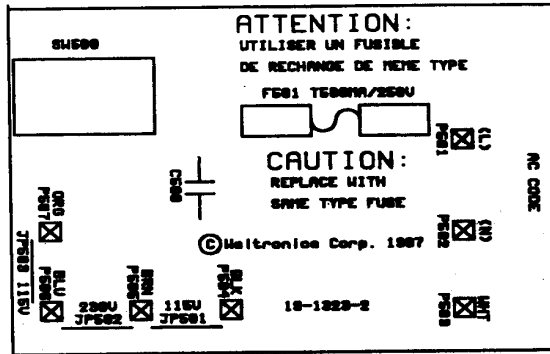
# PCB LAYOUT: MAINS AND PHONES MODULE (90-1323)



# MAINS WIRING INSTRUCTION

1. The power transformer of 1100 is UNIVERSAL type can be wired to 115V/230V mains voltages by changing the jumper wires on the the MAINS PCB.

2. MAINS P.C.B. drawing:



3. Jumper wires connected chart:

Jumper wires shall be connected for the mains voltage

Mains Voltage	Jumper wire
115V	JP501,JP503
230V	JP502

4. CAUTION: REPLACE WITH SAME TYPE FUSE.

ATTENTION: UTILISER UN FUSIBLE DE RECHANGE MEME TYPE.

MAINS	100V-120V	220V-240V
F501	T500mA 250V(32S1250500TU)	T500mA 250V(32S12505005TS)

T: TIME LAG FUSE.

# PARTS LIST

AMC 1100 SERVICE PARTS LIST				
SYMBOL NO.	PARTS NO.	DESCRIPTION	DESCRIPTION	QTY
		PACKING ASS'Y		
	34-1060	POLYLONE	4050CB	2
	34-1060UK	POLYLONE	FOR B VERSION ONLY	2
	34-2001	EPE PROTECTOR	435x40x80mm	1
	26-0018	POLY BAG	100x260x0.07mm	1
	26-0034	POLY BAG	235x368x0.03mm	1
	26-0035	POLY BAG	382x545x0.03mm	1
	21-4127	OWNER'S MANUAL	A1100	1
	27-2013	RCA SIGNAL WIRE	50CM	1
	CT-5264	CARTON, INNER	WxDxH (494x361x143mm)	1
	CT-5265	CARTON, OUTER	WxDxH (506x373x664mm)	0.25
		CHASSIS ASS'Y		
	11-8090	FRONT PANEL	A1100	1
	11-8327	REAR PANEL	A1100 (A1/EC)	1
	11-6121-1*A	FRONT CHASSIS	A3025a/50a/A.2/JSD900	1
	11-6182-2*B	MAIN CHASSIS	DACS/DACS9/JSD9200	1
	11-1123-1	TOP COVER	AMC	1
	12-3167	KNOB	VOLUME	1
	12-1083	POWER LINK		1
	12-3151	KNOB	CONTROL	5
	12-3152GN	BUTTON, POWER SWITCH	GREEN	1
	13-8227B	BUSHION, POWER KNOB		1
	13-8233BK	SPACER SUPPORT	SCB-5mm BLK	3
	13-8237BK	SPACER SUPPORT	SCB-5mm BLK	3
	14-3003	CORD BUSH	4N-4	1
	14-3027	POWER CORD	AH/A1 110-120V	1
	14-3028	POWER CORD	WG C/CE 220-240V	1
	14-3029	POWER CORD	BS1360 FUSE-3A B VER.	1
	15-2037	TERMINAL GROUND	TERMINAL GROUND	1
	15-2037-1	TERMINAL BOLT	TERMINAL BOLT	1
	15-2037-2	NUT BOLT	NUT BOLT	1
	15-2037-3	WASHER, STOP	MW3.3 3.7*9.0	1
	15-2037-5	WASHER, TOOTH	LOCK-EXT	1
	21-2315	LABEL LIGHT FLASH	LABEL LIGHT FLASH	1
	21-2426	LABEL, POWER CORD	B VERSION	1
	28-1049-1	CUSHION, CONTROL KNOB		5
	28-1049-3	CUSHION, VOLUME	B 35.9*14.4mm	1
	29-2160	POWER TRANSFORMER	N114/JSD920 S-3821	1
	30-1115	DIODE, LED	CSL300GDT	1
	3281250500TU	FUSE, T500mA/250V	T-LAG UL/CSA A1	3
	3281250500TB	FUSE, T500mA/250V	T-LAG SEMKO EC/B	3
	90-1323	MAINS AND PHONES MODULE		1
	19-1323	PCB	110x107x1.6mm	1
R909 R910	16-1-2CA101J	RES., CARBON FILM	100 1/2W +-5%	2
R901 R902	16-1-6CA101J	RES., CARBON FILM	100 1/6W +-5%	2
R907 R908	16-1-6CA103J	RES., CARBON FILM	10K 1/6W +-5%	2
R903 R904 R905 R906	16-1-6CA223J	RES., CARBON FILM	22K 1/6W +-5%	4
C905 C906	17-1ER226M	CAP., ELETROLYTIC	22uF/10V +-20%	2
C901 C902	17-2.5ER106M	CAP., ELETROLYTIC	10uF/25V +-20%	2
C910	17-5DR104Z	CAP., CERAMIC	100nF/50V +-80%-20%	1
C903 C904	17-5DR470J	CAP., CERAMIC	47pF/50V +-5%	2
C909	17-5ER106M	CAP., ELETROLYTIC	10uF/50V +-20%	1
C907 C908	17-5FR103J	CAP., PP	0.01uF/50V +-5%	2
C911 C912	17-5FP228M	CAP., ELETROLYTIC	2200uF/50V +-20%	2
C501	17-40CR472M	CAP., CERAMIC, AC	4700P/400V +-20%	1
CN903	12-1087-2WT	CONNECTOR	2P WHITE	1
CN904	12-1087-3WT	CONNECTOR	3P WHITE	1
CN901/902/207/208	12-1087-4WT	CONNECTOR	4P WHITE	4
J901	12-2128G	H/P JACK	CP1-061-9G W/CLIPPER	1
U901	30-NJM2043D	IC., OPAMP	NJM2043D	1
BD901	30-RB154	DIODE, BRIDGE	RB154 400V	1
F901x2 F902x2 F501x2	32S2016	FUSE HOLDER	5x20mm	6
SW501	31-1213*B	POWER SWITCH	TV-3 4A	1
	90-1275	INPUT AND CONTROL MODULE		
	19-1275	PCB	229.4x124.6mm	1
R221 R421	16-1-6CA101J	RES., CARBON FILM	100 1/6W +-5%	2

## PARTS LIST

AMC 1100 SERVICE PARTS LIST				
SYMBOL NO.	PARTS NO.	DESCRIPTION	DESCRIPTION	QTY
R201-R207 R401-R407	16-1:6CA101J	RES., CARBON FILM	100 1/6W +-5%	14
R219 R419 R227 R233	16-1:6CA102J	RES., CARBON FILM	1K 1/6W +-5%	4
R215 R216 R415 R416	16-1:6CA104J	RES., CARBON FILM	100K 1/6W +-5%	4
R218 R418 R232	16-1:6CA123J	RES., CARBON FILM	12K 1/6W +-5%	3
R228	16-1:6CA105J	RES., CARBON FILM	1M 1/6W +-5%	1
R225	16-1:6CA155J	RES., CARBON FILM	1.5M 1/6W +-5%	1
R231	16-1:6CA113J	RES., CARBON FILM	11K 1/6W +-5%	1
R230	16-1:6CA222J	RES., CARBON FILM	2K2 1/6W +-5%	1
R209-214 R409-414	16-1:6CA333J	RES., CARBON FILM	33K 1/6W +-5%	12
R224 R424	16-1:6CA561J	RES., CARBON FILM	560 1/6W +-5%	2
R217 R417	16-1:6CA683J	RES., CARBON FILM	68K 1/6W +-5%	2
R220 R420	16-1:6MA1780	RES., METAL FILM	178 1/6W +-1%	2
R223 R423	16-1:6MA5620	RES., METAL FILM	562 1/6W +-1%	2
R222 R422	16-1:6MA3161	RES., METAL FILM	3.16K 1/6W +-1%	2
R226	16-1:2AN222J	RES., METAL OXIDE	2.2K 1/2W +-5%	1
R229	16-1:2AN103J	RES., METAL OXIDE	10K 1/2W +-5%	1
R234	16-1:2CA682J	RES., CARBON FILM	6K8 1/2W 5%	1
R408 R208	16-LP8A224J	RES., SIP	220Kx7 8P +-5%	2
C222	17-5ER475M	CAP., ELECTROLYTIC	4.7uF/50V +-20%	1
C213 C223 C230	17-5ER106M	CAP., ELECTROLYTIC	10uF/50V +-20%	3
C413 C232 C233 C231	17-5ER106M	CAP., ELECTROLYTIC	10uF/50V +-20%	4
C217 C417 C208 C408	17-1:6ER107M	CAP., ELECTROLYTIC	100uF/16V +-20%	4
C214 C414	17-1:6ER227M	CAP., ELECTROLYTIC	220uF/16V +-20%	2
C210 C212 C410 C412	17-1:6ER476M	CAP., ELECTROLYTIC	47uF/16V +-20%	4
C201-C207 C401-C407	17-5DR101J	CAP., CERAMIC	100pF/50V +-5%	14
C211 C220	17-5DR104Z	CAP., CERAMIC	100nF/50V +80%-20%	2
C209 C409	17-5DR330J	CAP., CERAMIC	33pF/50V +-5%	2
C221 C421	17-5DR331J	CAP., CERAMIC	330pF/50V +-5%	2
C216 C416	17-5FR104J	CAP., PP	0.1uF/50V +-5%	2
C218 C418	17-5FR124J	CAP., PP	0.12uF/50V +-5%	2
C215 C415	17-5FR183J	CAP., PP	0.018uF/50V +-5%	2
C219 C419	17-6:3GR684J	CAP., METALIZED POLYESTER(BOX)	680nF/63V 5%	2
D201 C202 C401	30-1N4148	DIODE, SWITCHING	1N4148	3
D204	30-1N4002	DIODE	1N4002 100V 1A	1
D203	30-1:2Z15V	DIODE, ZENER	15V 0.5W HZ15-2	1
D205	30-1:2Z18V	DIODE, ZENER	18V 0.5W HZ18-2	1
Q204	30-2SC2240GR	TR., NPN	2SC2240GR/BL	1
Q202	30-2SA970GR	TR., PNP	2SA970GR/BL	1
CN203	12-1102-34	PIN HEADERS	34P(17Px2)	1
J201-202 J206-207 J208-209	12-2192G	RCA JACK, GOLD PLATED	4P CPS-054GA-H	3
J203-205	12-2193G	RCA JACK, GOLD PLATED	6P CPS-056GA-H	1
CN205	12-1087-4WT	CONNECTOR	4P WHITE	1
CN201	12-1103-34	PIN HEADERS	34P(17Px2)	1
CN204	12-1087-3WT	CONNECTOR	3P WHITE	1
CN206	14-1157-1	TERMINAL	2P L TYPE	1
JP202	14-1270	WIRE ASSY	4P #28 L=330mm	1
VR201-VR205	29-4130	VR., INPUT	RK09K12C0067-100KKx2	5
VR206	29-4222	VR., VOLUME	RK16312AR476-20KBx2	1
VR207 VR208	29-4127	VR., TONE	RK163121A125-10KCx2	2
VR209	29-4128*A	VR., BALANCE	RK163111E281-20KW	1
Q203	30-TIP29C	TR TIP29C	TR TIP29C	1
IC203	30-LM7915	IC., REGULATOR	LM/AN/JRC/7915A 1A	1
Q201 Q401	30-28K363GR	TR., FET	28K363GR	2
IC201 IC202	30-NE5532	IC., OPAMP	NE5532N, PHILIPS	2
SW202	31-1241	SW ROTARY	SRRZS42N01-EK	1
SW201	31-1242	SW ROTARY	SRRZS46N08-EK	1