



WE SIMPLY SOUND BETTER.

# **AV125.7-AV125.5**

## **SERVICE MANUAL**

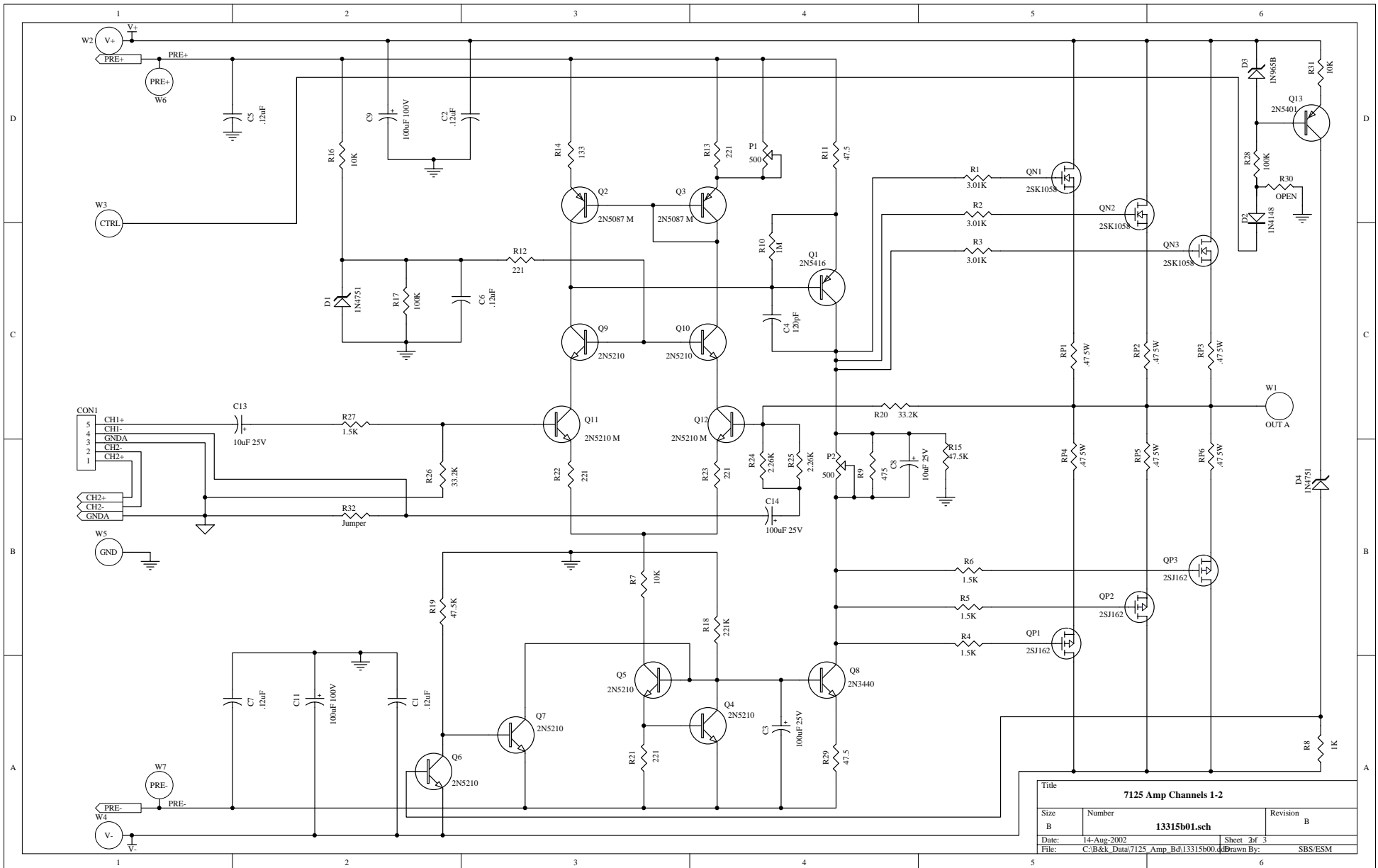
B&K COMPONENTS, LTD.  
2100 Old Union Road  
Buffalo, New York 14227-2725  
U.S.A.

**B & K**

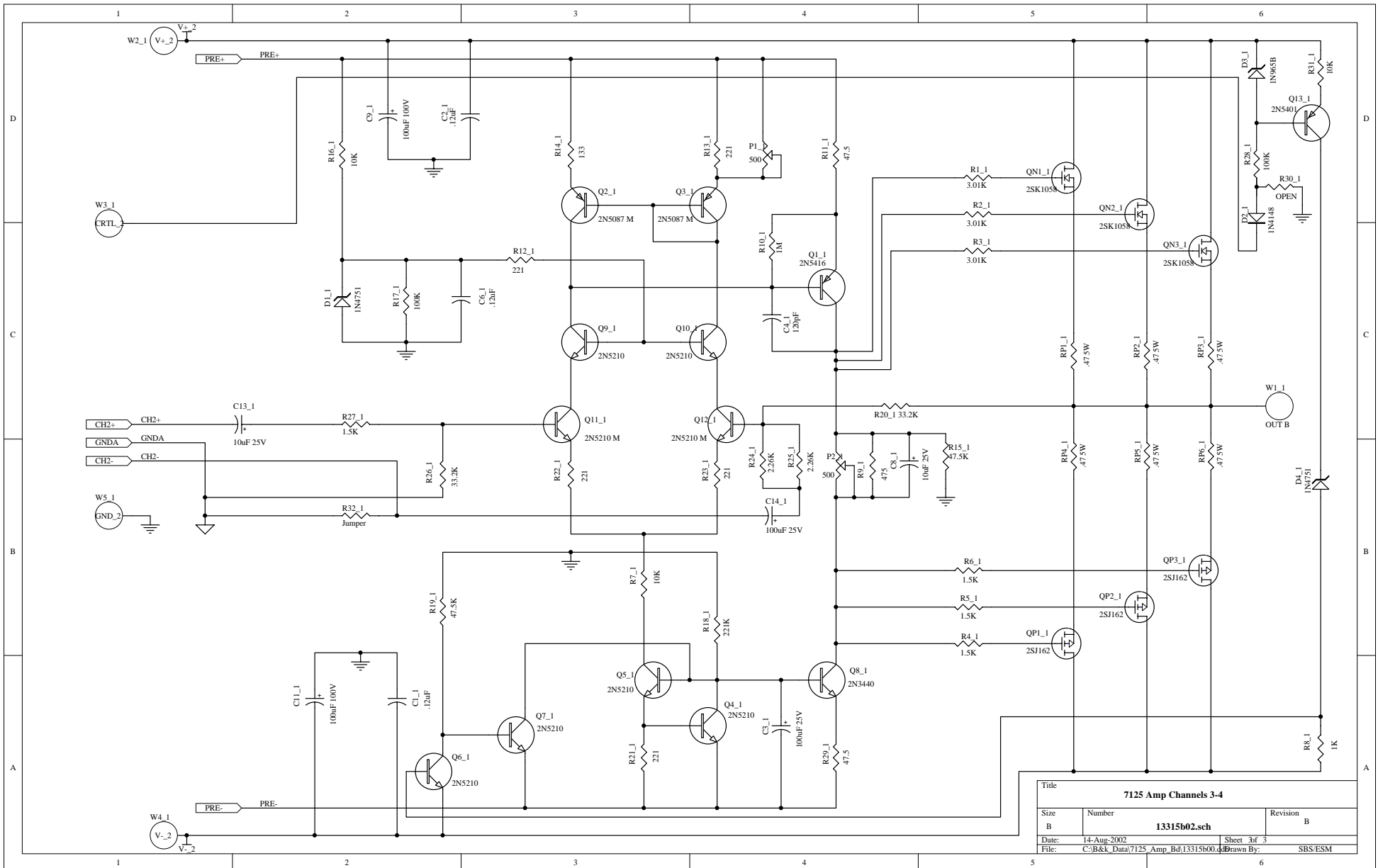
WE SIMPLY SOUND BETTER.

# **Schematics**

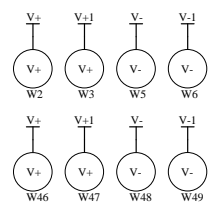
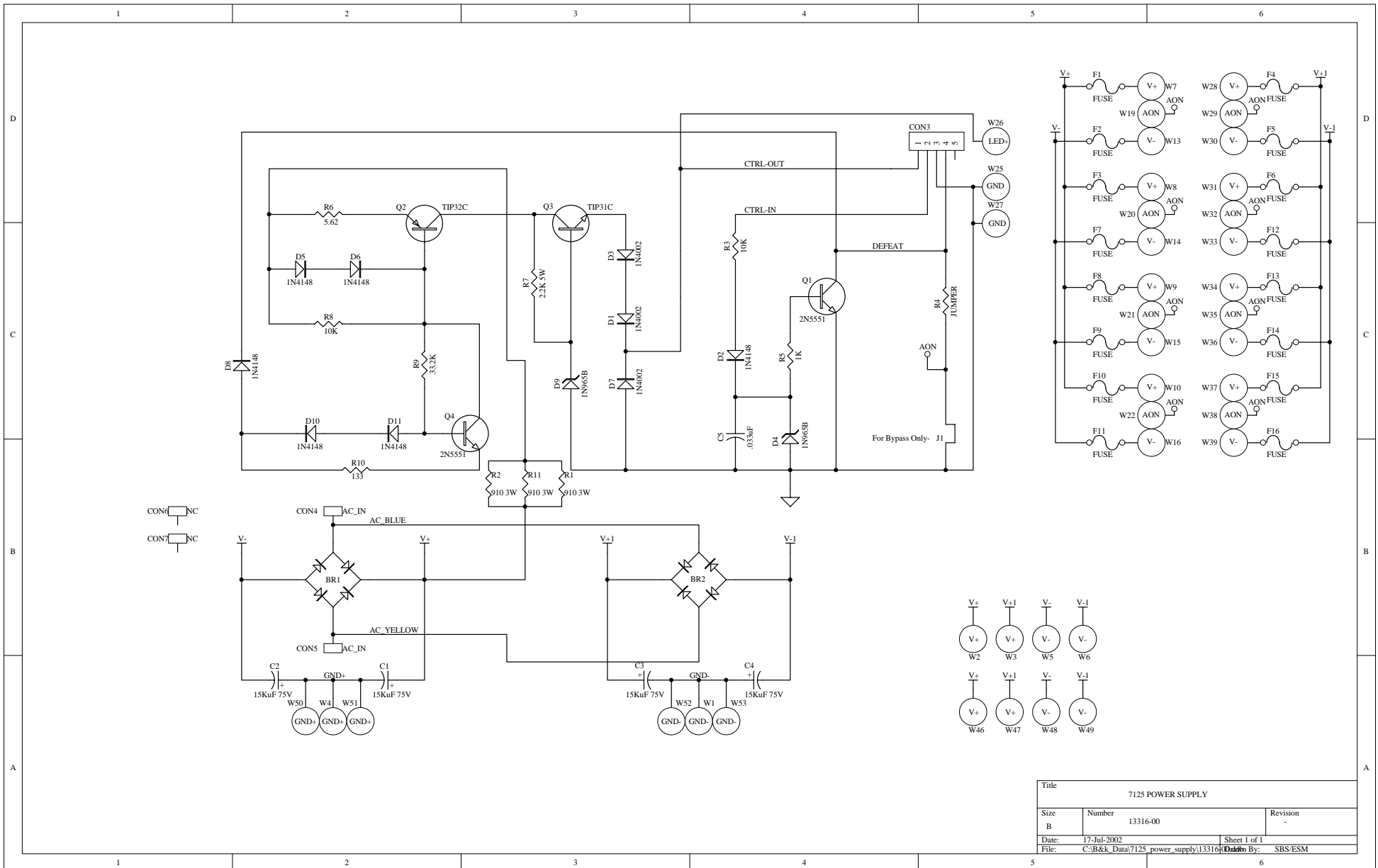
B&K COMPONENTS, LTD.  
2100 Old Union Road  
Buffalo, New York 14227-2725  
U.S.A.



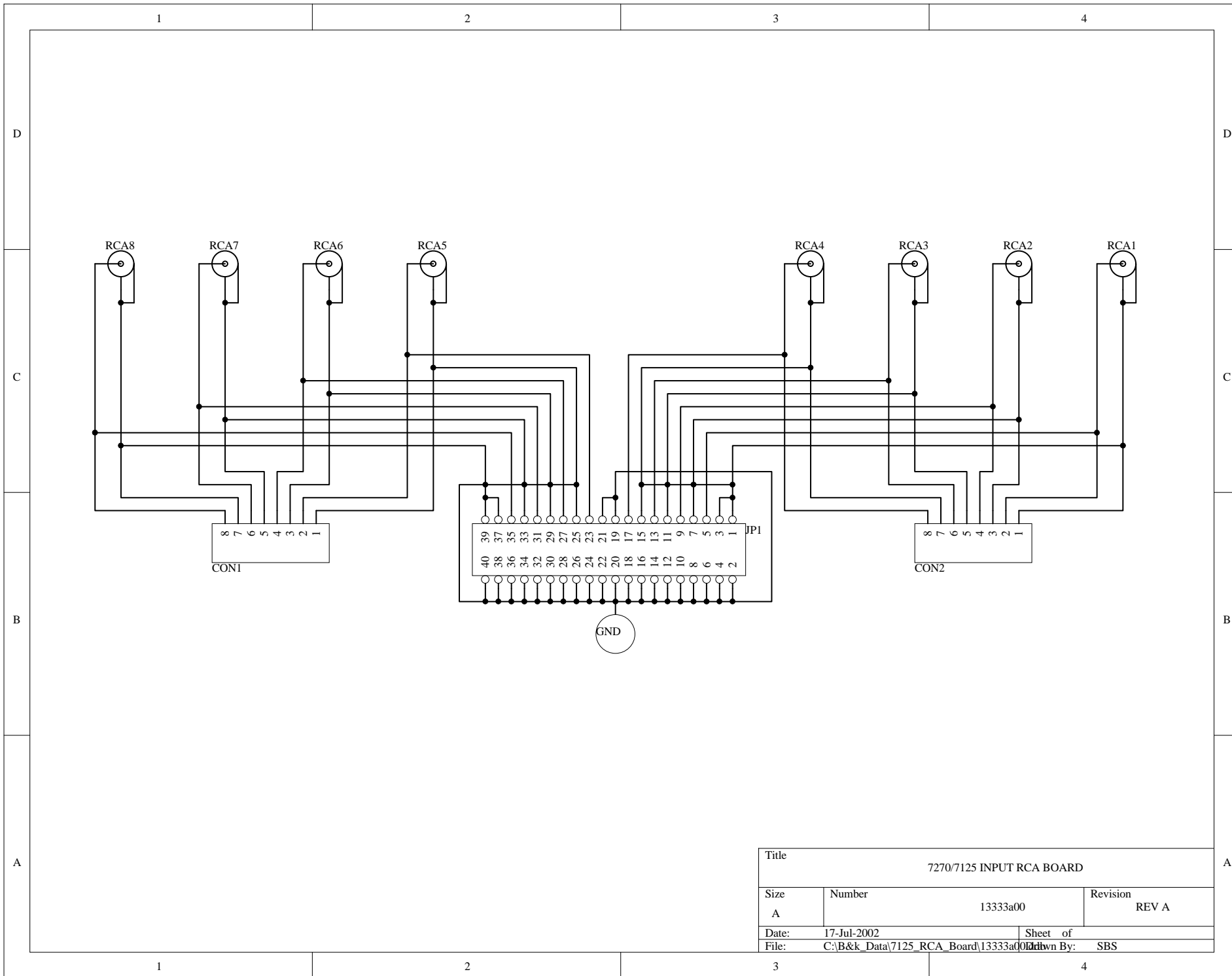
Title			
<b>7125 Amp Channels 1-2</b>			
Size	Number	Revision	
B	13315b01.sch	B	
Date:	14-Aug-2002	Sheet	2 of 3
File:	C:\B&k_Data\7125_Amp_Bd\13315b00.d	Drawn By:	SBS/ESM



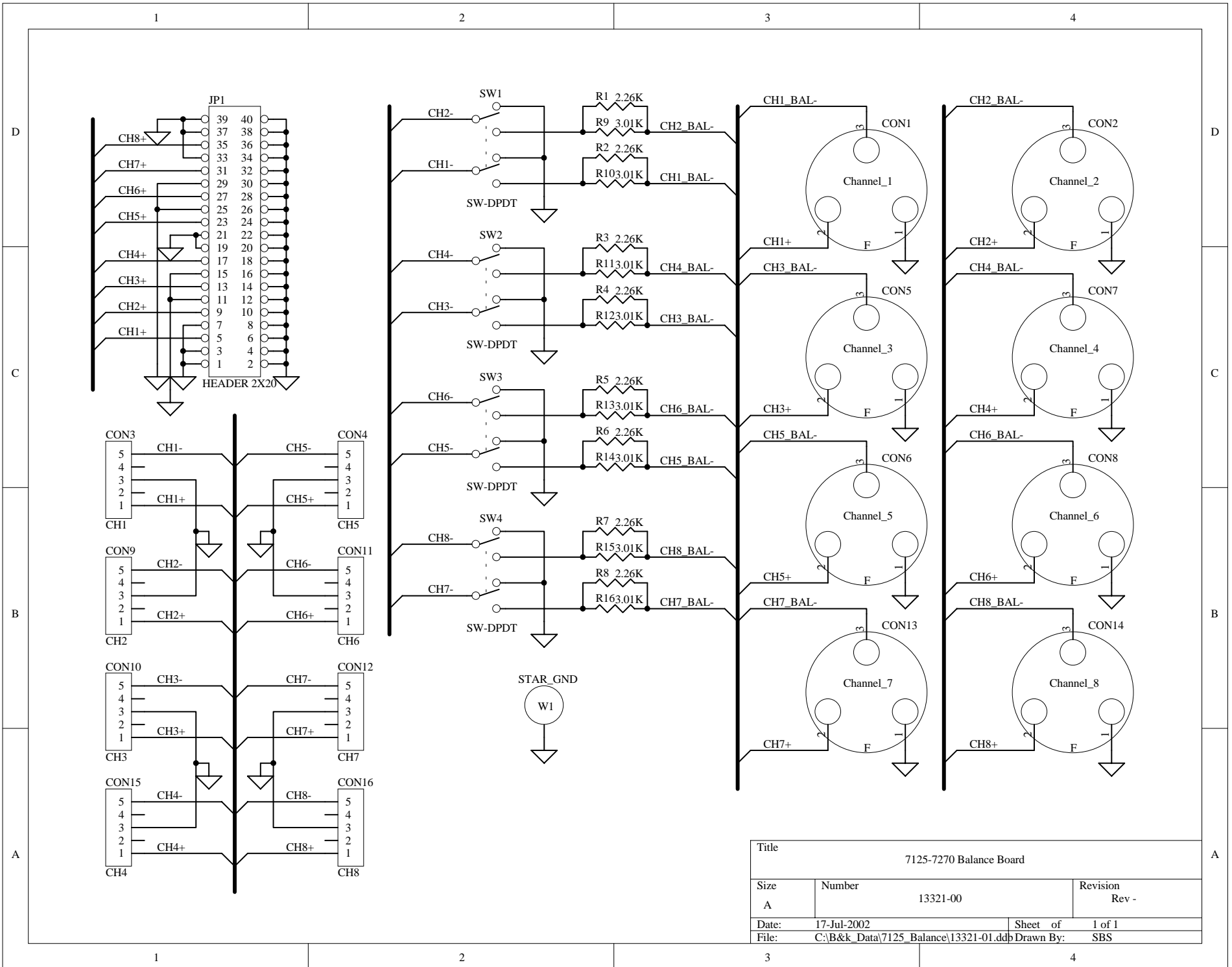
Title			
7125 Amp Channels 3-4			
Size	Number	Revision	
B	13315b02.sch	B	
Date:	14-Aug-2002	Sheet	3 of 3
File:	C:\B&k_Data\7125_Amp_Bd\13315b00.d	Drawn By:	SBS/ESM



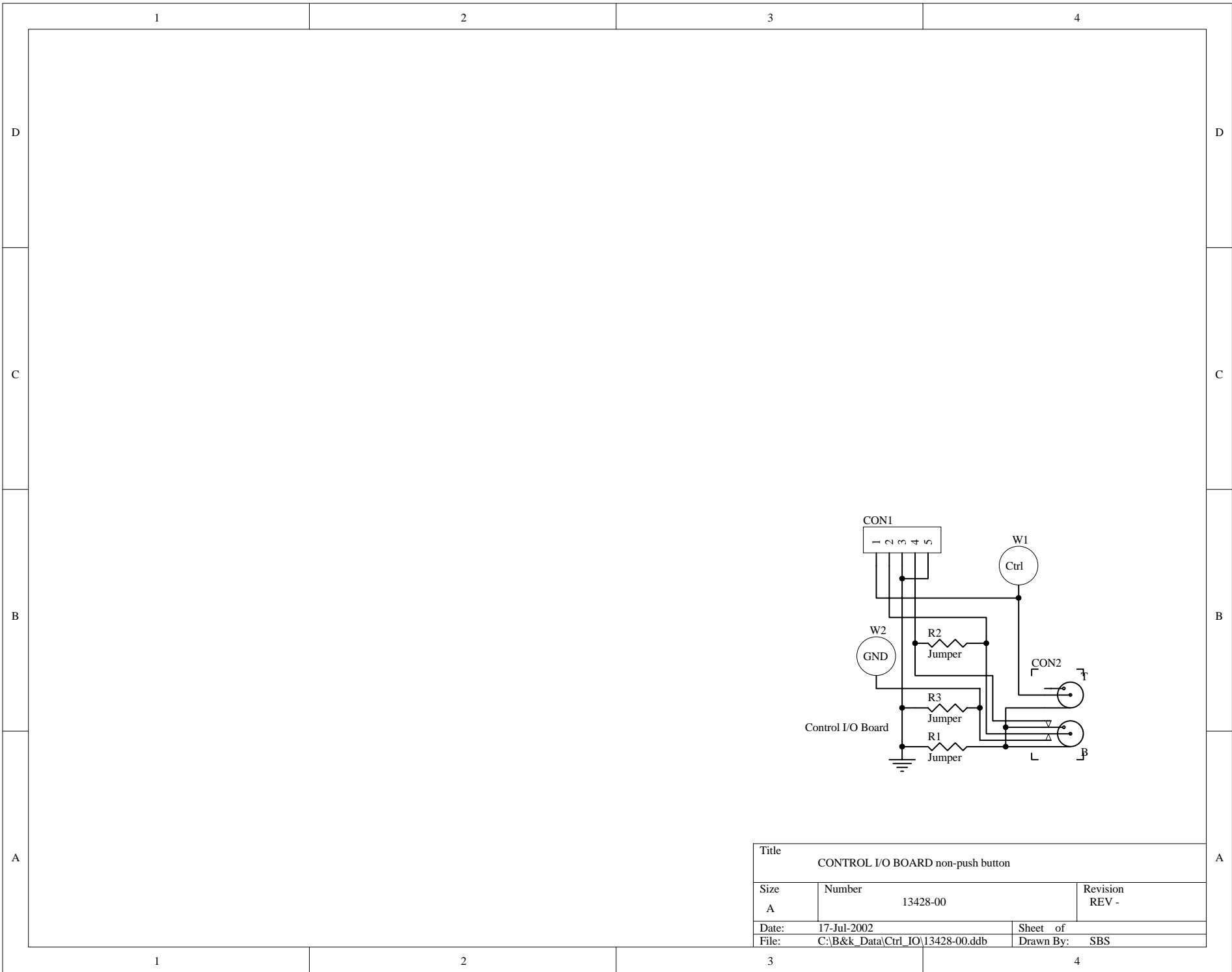
Title		7125 POWER SUPPLY	
Size	Number	Revision	
B	13316-00	-	
Date:	17-Jul-2002	Sheet 1 of 1	
File:	C:\B&k_Data\7125_power_supply\13316	Drawn By:	SBS/ESM



Title			7270/7125 INPUT RCA BOARD		
Size	Number			Revision	
A		13333a00		REV A	
Date:	17-Jul-2002		Sheet of		
File:	C:\B&k_Data\7125_RCA_Board\13333a00		Drawn By:	SBS	



Title			7125-7270 Balance Board		
Size	Number	Revision		Rev -	
A	13321-00				
Date:	17-Jul-2002	Sheet of	1 of 1		
File:	C:\B&k_Data\7125_Balance\13321-01.ddb	Drawn By:	SBS		



Title		
CONTROL I/O BOARD non-push button		
Size	Number	Revision
A	13428-00	REV -
Date:	17-Jul-2002	Sheet of
File:	C:\B&k_Data\Ctrl_IO\13428-00.ddb	Drawn By: SBS