

BLOCK DIAGRAM

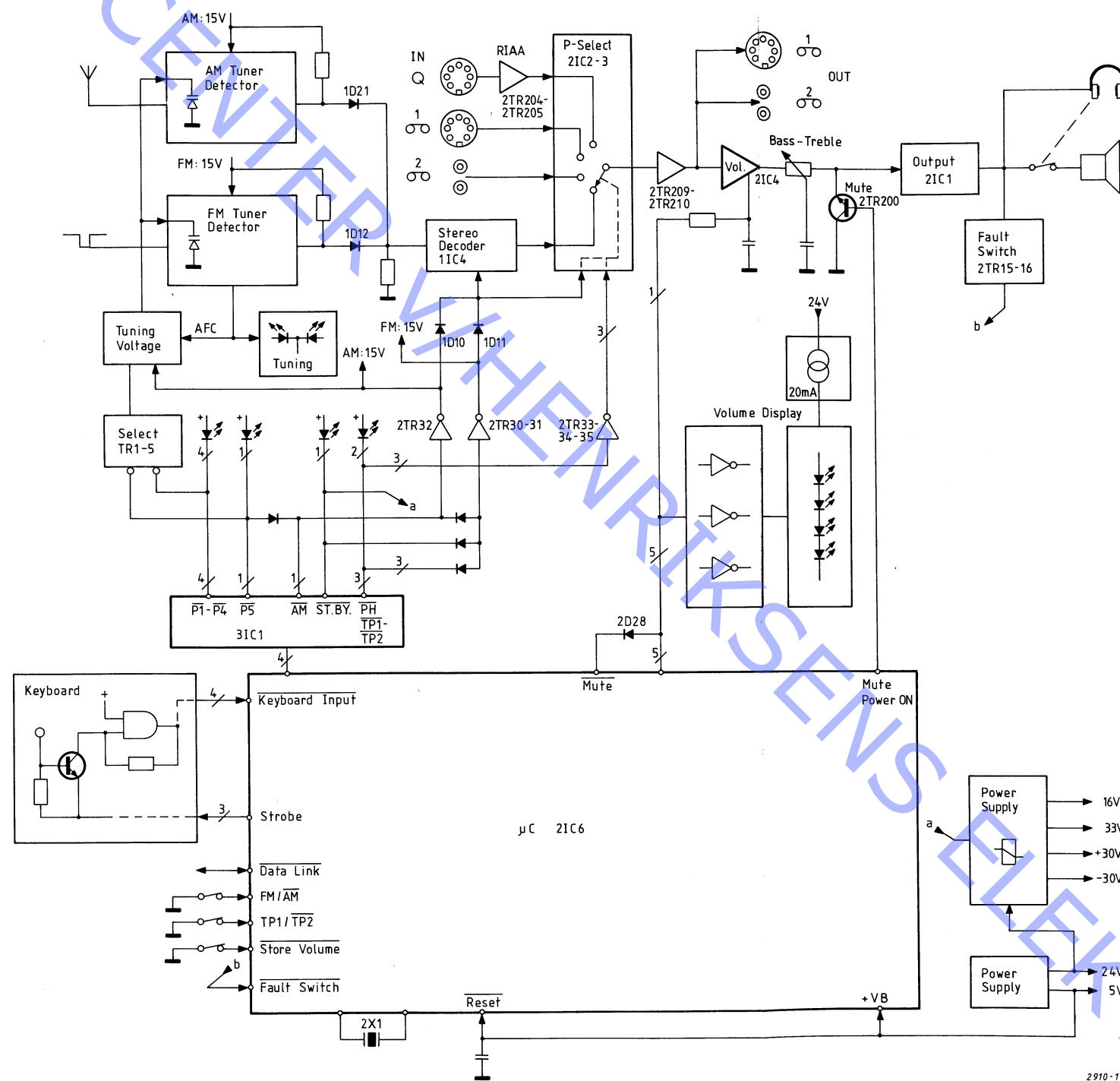


DIAGRAM A, type 2912/15/17 From serial no. 2930001

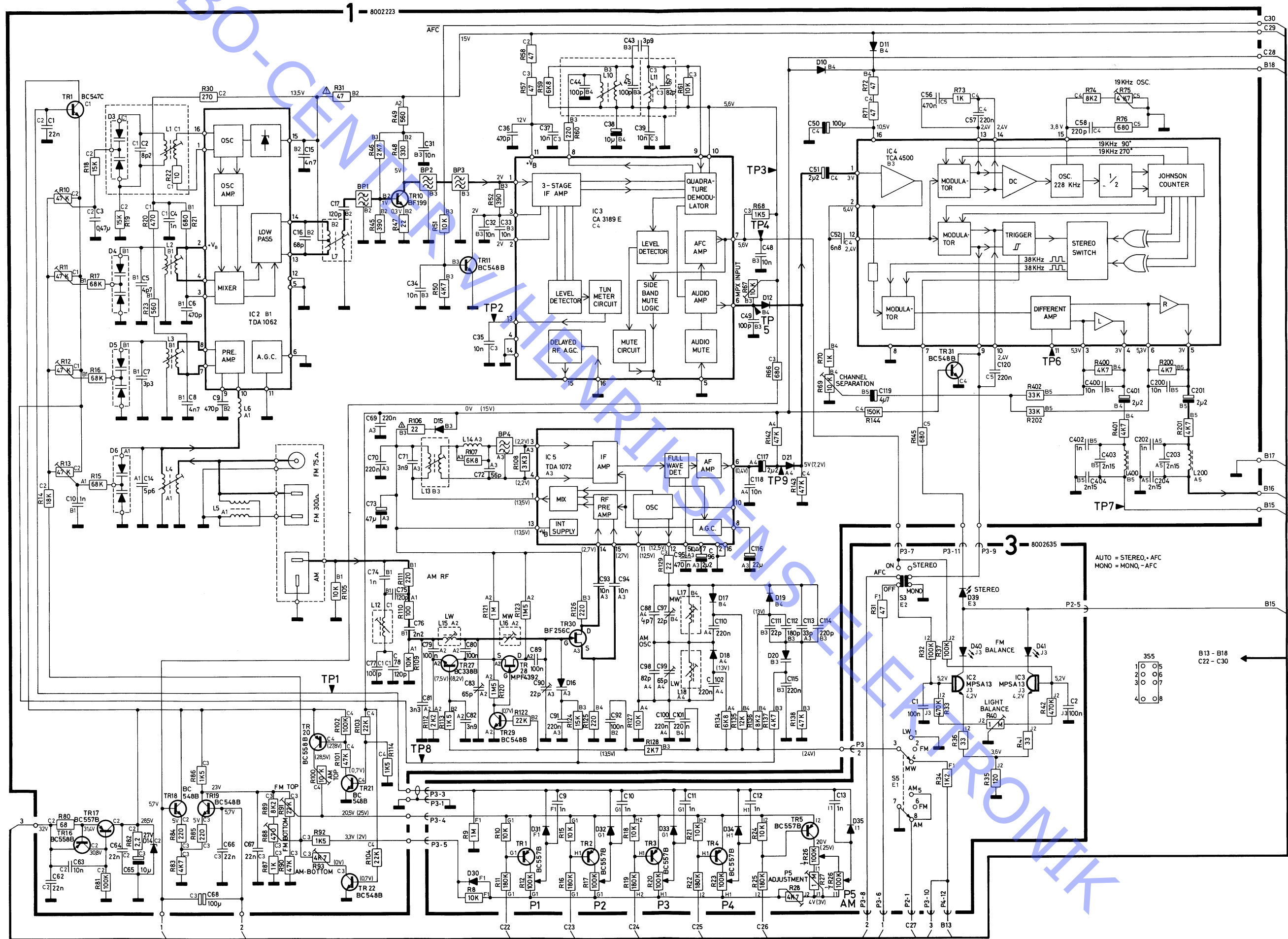


DIAGRAM B, all types

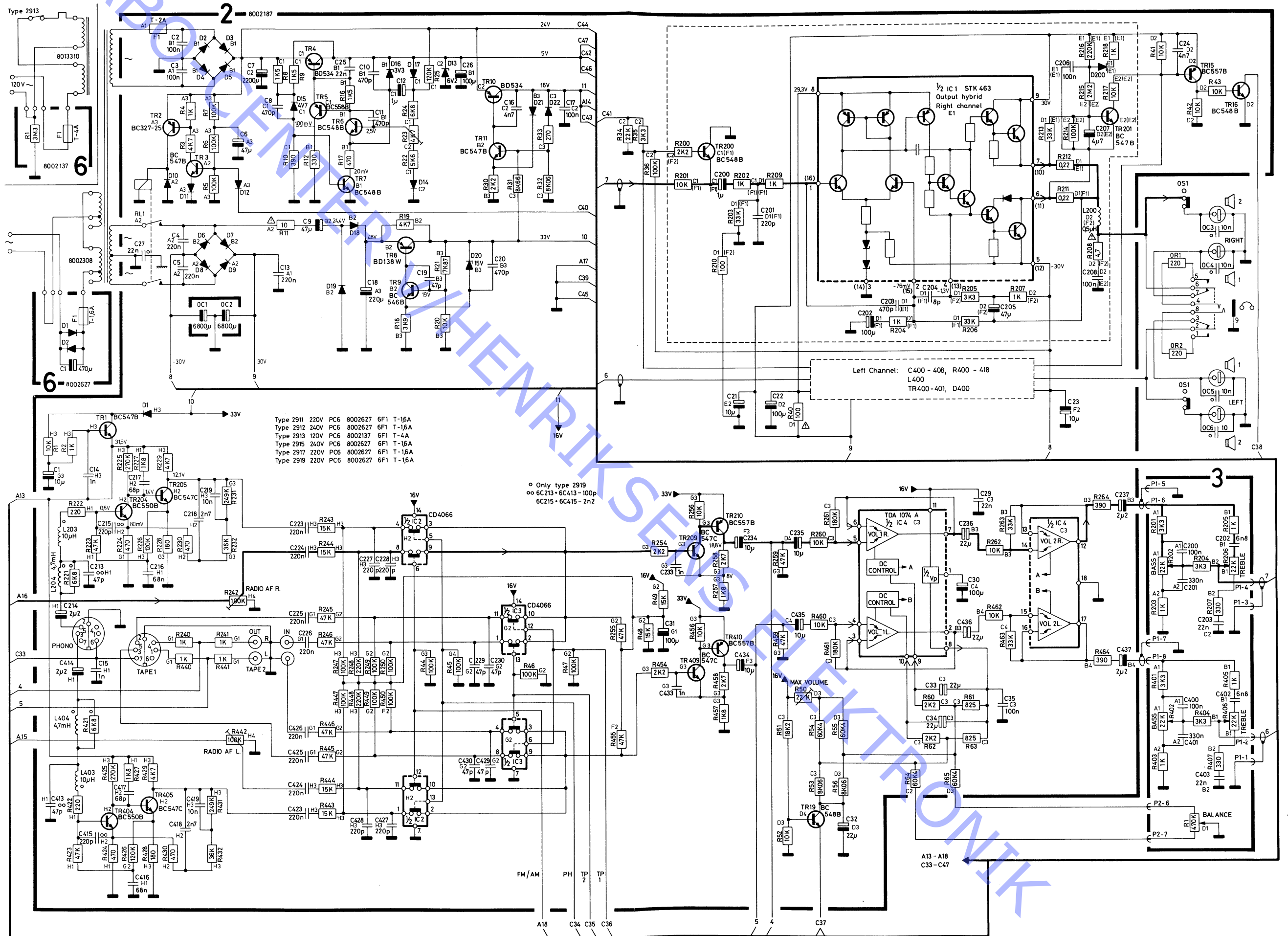
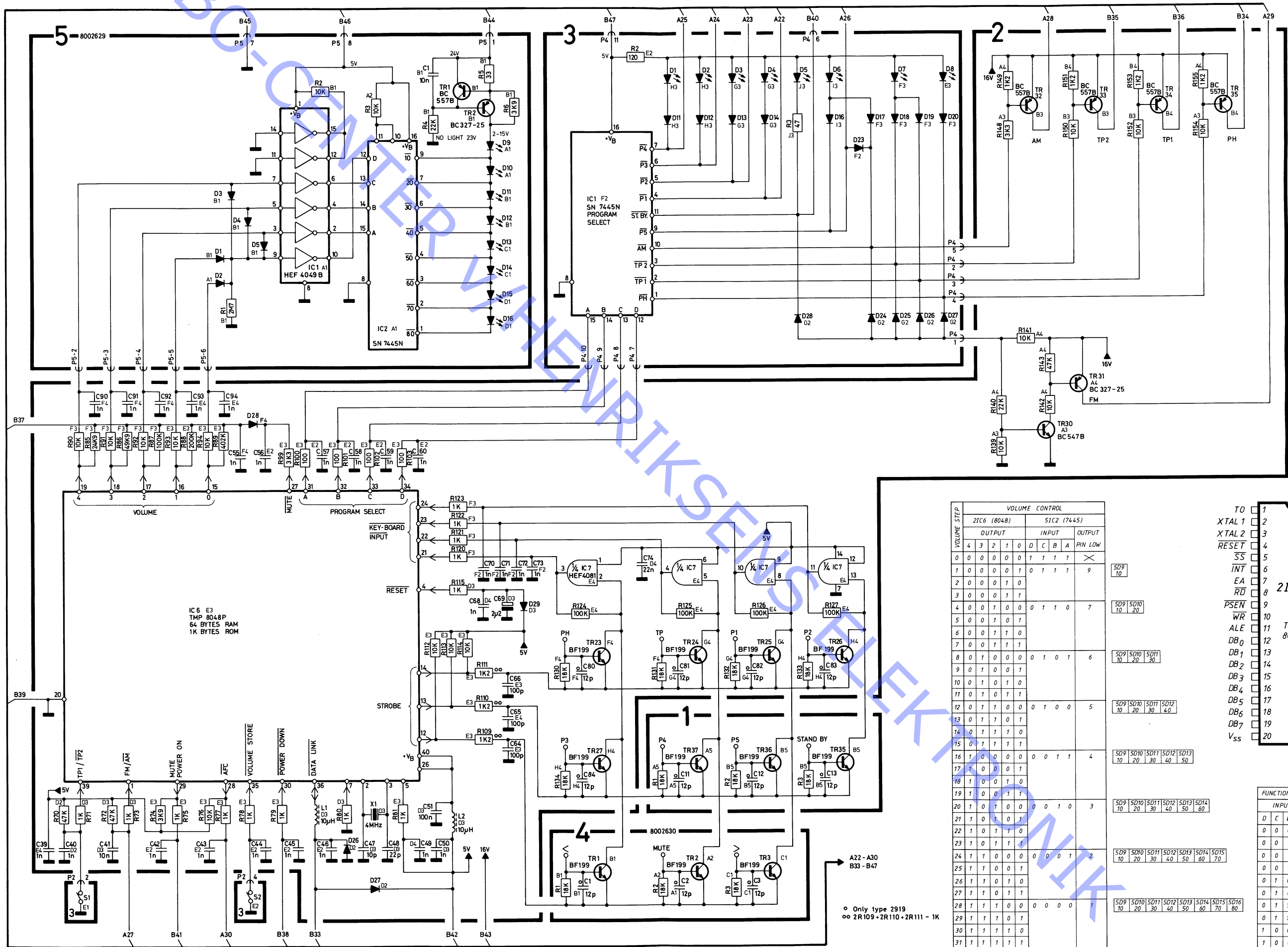


DIAGRAM C, all types



VOLUME STEP	VOLUME CONTROL									
	2IC6 (8048)		5IC2 (7445)							
	OUTPUT	INPUT	OUTPUT							
	4	3	2	1	0	D	C	B	A	PIN LOW
0	0	0	0	0	0	1	1	1	1	×
1	0	0	0	0	1	0	1	1	1	9
2	0	0	0	1	0	1	1	1	1	
3	0	0	0	1	1	0	1	1	1	
4	0	0	1	0	0	0	1	1	0	7
5	0	0	1	0	1	0	1	1	0	
6	0	0	1	1	0	1	1	1	0	
7	0	0	1	1	1	0	1	1	0	
8	0	1	0	0	0	0	1	0	1	6
9	0	1	0	0	1	0	1	0	1	
10	0	1	0	1	0	0	1	0	0	
11	0	1	0	1	1	0	1	0	0	
12	0	1	1	0	0	0	1	0	0	5
13	0	1	1	0	1	0	1	0	0	
14	0	1	1	1	0	0	1	1	0	
15	0	1	1	1	1	0	0	1	1	
16	1	0	0	0	0	0	0	1	1	4
17	1	0	0	0	1	0	0	1	0	
18	1	0	0	1	0	0	0	1	0	
19	1	0	0	1	1	0	0	1	0	
20	1	0	1	0	0	0	0	1	0	3
21	1	0	1	0	1	0	0	1	0	
22	1	0	1	1	0	0	0	1	0	
23	1	0	1	1	1	0	0	1	0	
24	1	1	0	0	0	0	0	0	1	2
25	1	1	0	0	1	0	0	0	0	
26	1	1	0	1	0	0	0	0	0	
27	1	1	0	1	1	0	0	0	0	
28	1	1	1	0	0	0	0	0	0	1
29	1	1	1	1	0	0	0	0	0	
30	1	1	1	1	1	0	0	0	0	
31	1	1	1	1	1	1	0	0	0	

FUNCTION TABLE 3IC1 (7445)				
INPUTS	FUNCTION			
D	C	B	A	PIN LOW
0	0	0	0	PHONO
0	0	0	1	TAPE 1
0	0	1	0	TAPE 2
0	0	1	1	AM
0	1	0	0	P5
0	1	0	1	ST. BY
0	1	1	0	P1
0	1	1	1	P2
1	0	0	0	P3
1	0	0	1	P4

○ Only type 2919
 ⊙ 2R109 • 2R110 • 2R111 - 1K