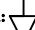
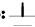


NOTES: UNLESS OTHERWISE SPECIFIED

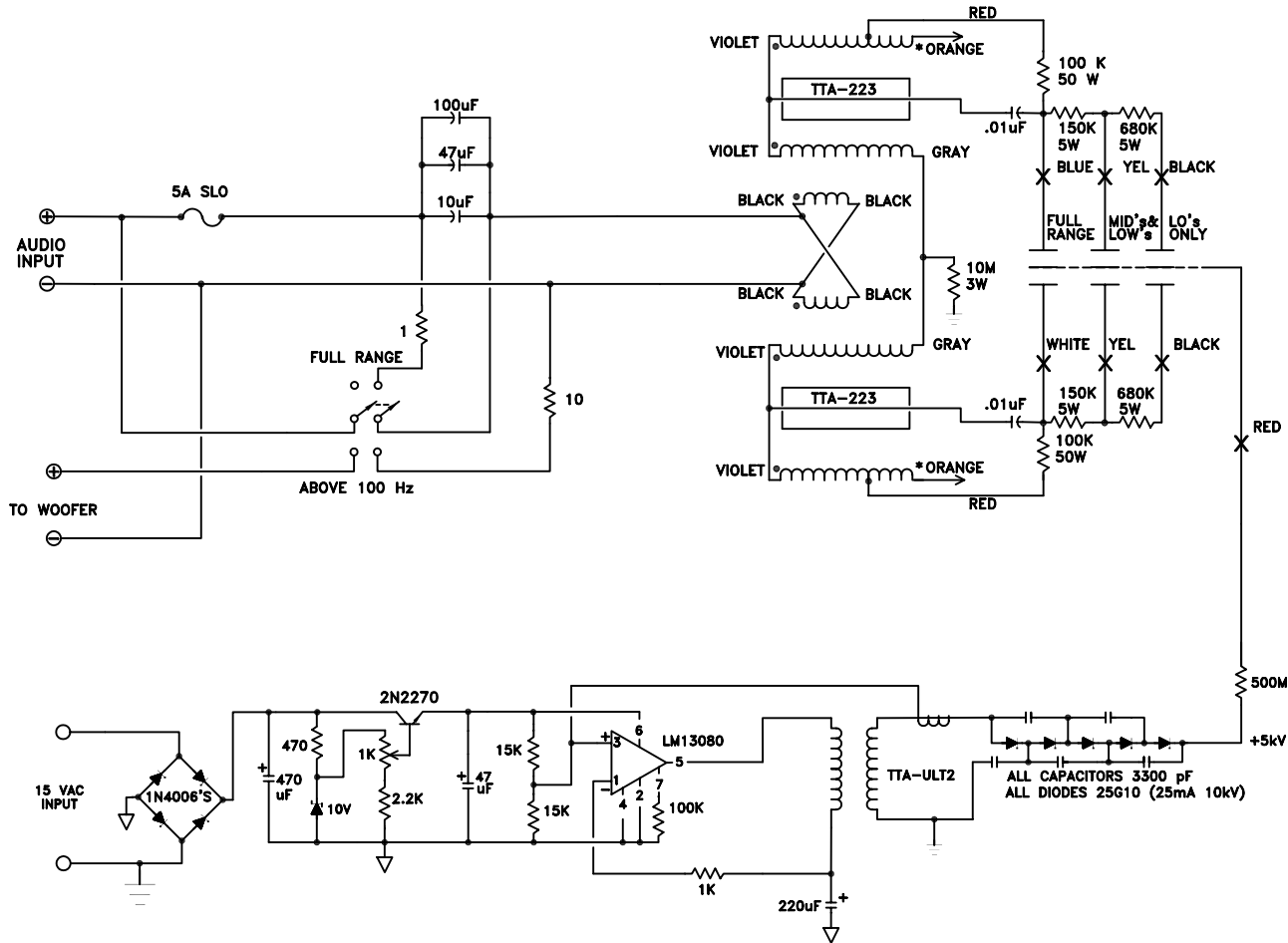
1: ALL RESISTORS ARE OHMS

2:  = LOW VOLTAGE GROUND

3:  = HIGH VOLTAGE GROUND

4: \* = TRANSFORMER TAP  
 RED FOR SPECTRA 2200  
 ORANGE FOR SPECTRA 3300

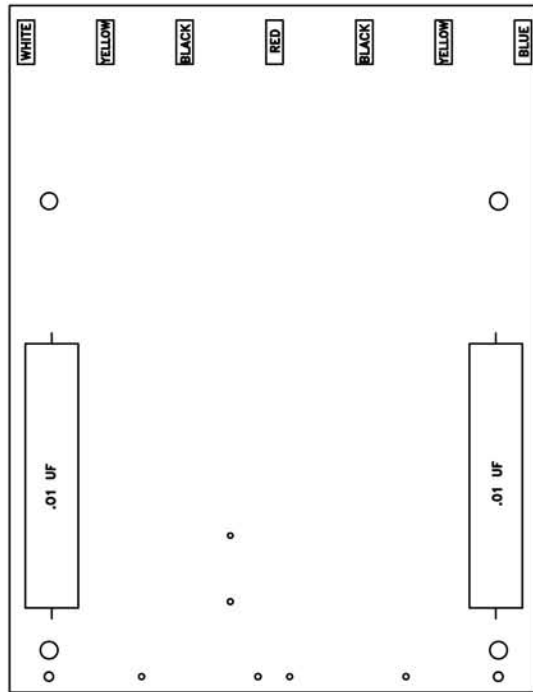
# MK-2123 MAGNE-KINETIC INTERFACE FOR SPECTRA 2200/3300



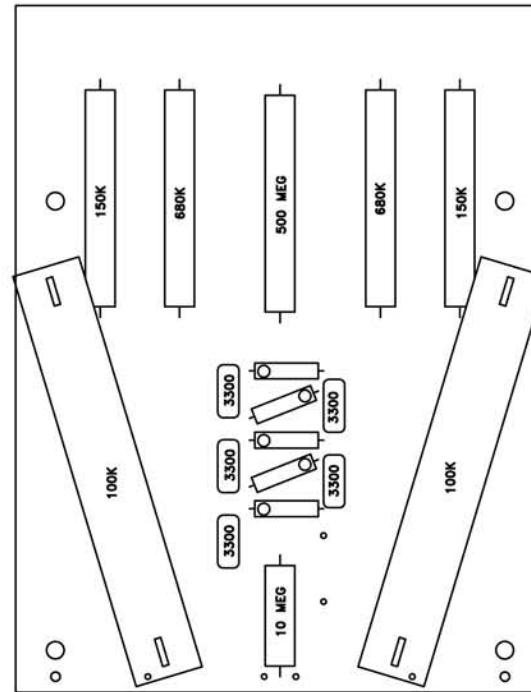
REVISIONS:

1. 5/29/91: UPDATED BIAS SUPPLY

ACOUSTAT  
 A DIVISION OF ROCKFORD CORP.  
 TEMPE, AZ., 85281, USA



SOLDER SIDE

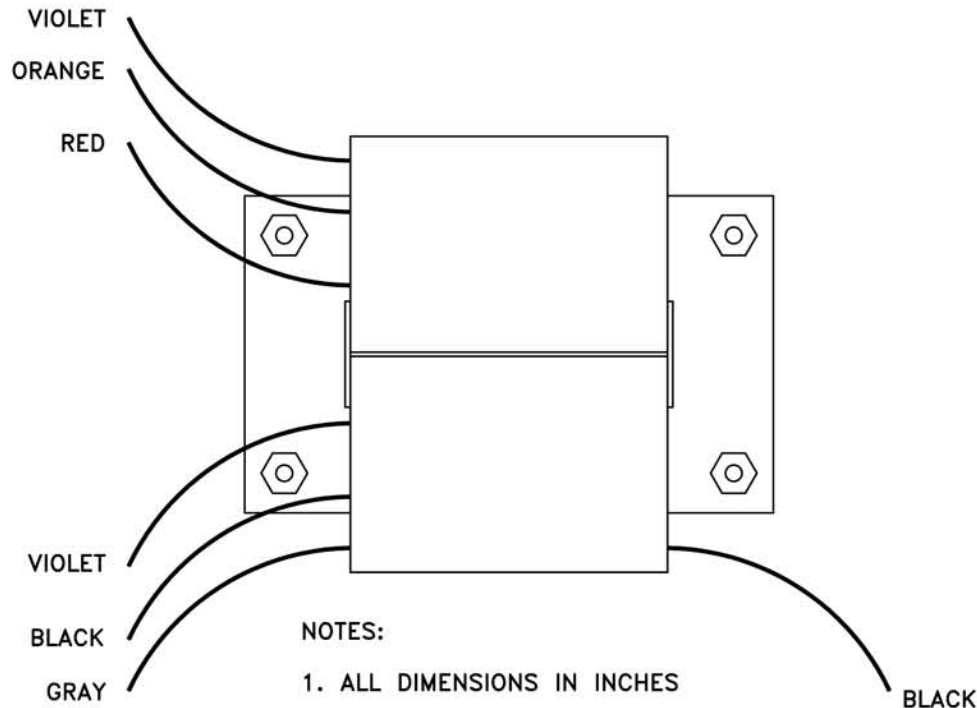
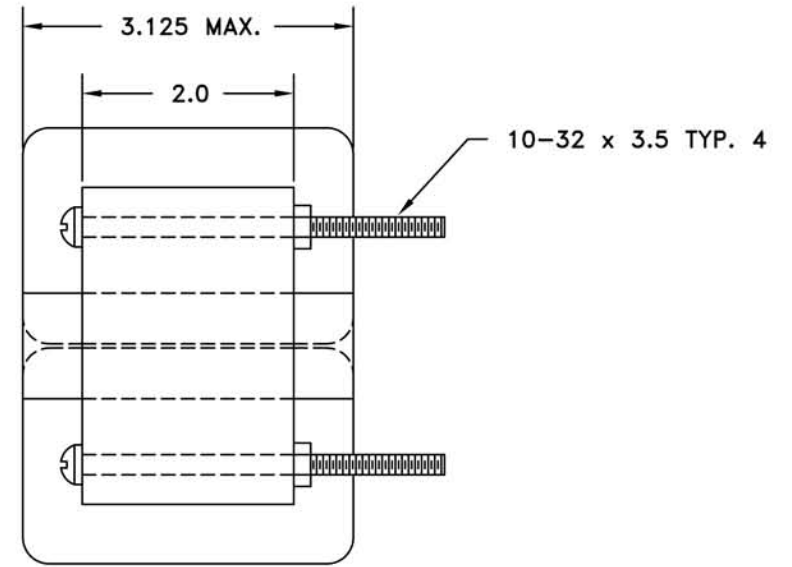
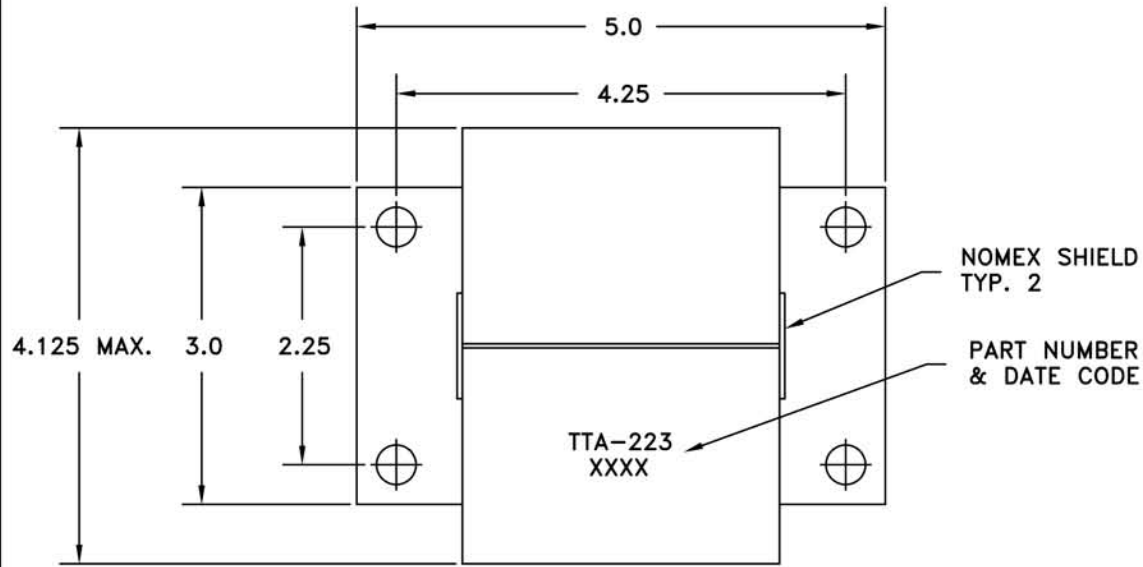


COMPONENT SIDE

ACOUSTAT  
A DIVISION OF ROCKFORD CORPORATION

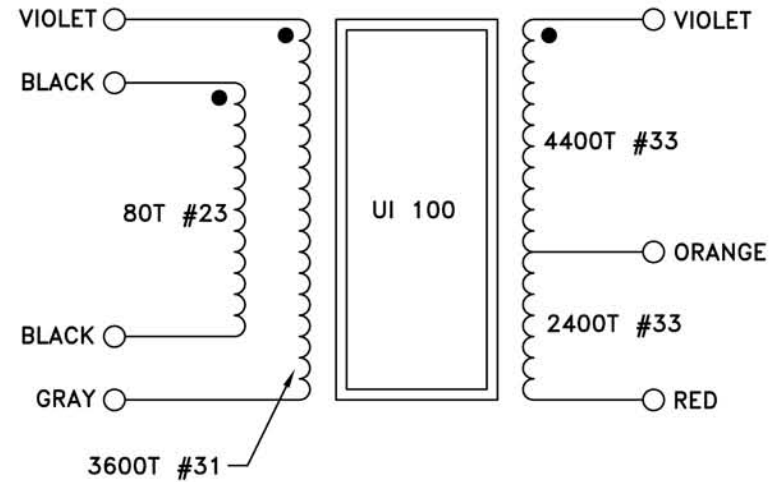
2200/3300 PC LAYOUT

ANY TECHNICAL QUESTIONS REGARDING  
THIS PRINT SHOULD BE REFERRED TO  
ANDY SZABO (602)967-3565 EXT. 3036



NOTES:

1. ALL DIMENSIONS IN INCHES
2. 3 MIL NOMEX INSULATION
3. 6 KV HIGH POT TEST
4. ALL LEADS 20 GA. TEFLON, 14" LONG INCLUDING 1/2" STRIP



ACOUSTAT  
A DIVISION OF ROCKFORD CORPORATION  
2200/3300 TRANSFORMER

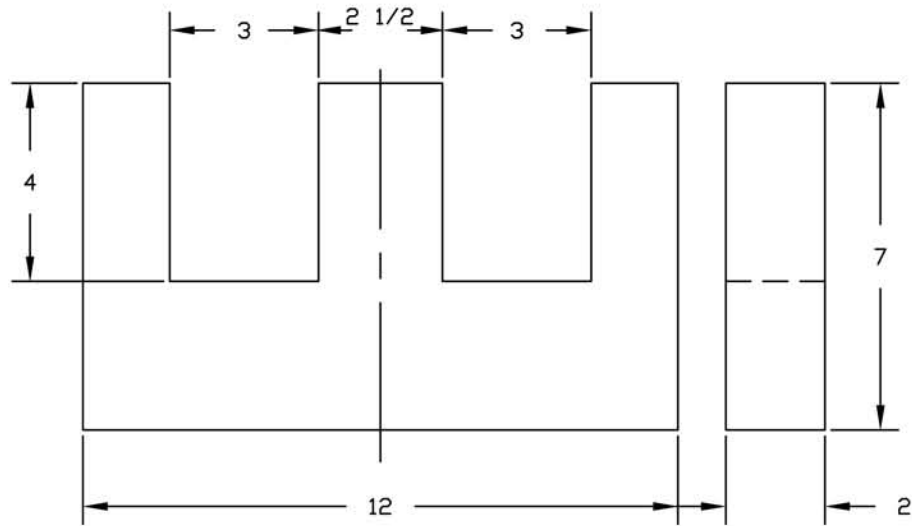
FILENAME: C:\ACAD\22003300\TTA223  
ANY TECHNICAL QUESTIONS REGARDING  
THIS PRINT SHOULD BE REFERRED TO  
ANDY SZABO (602)967-3565 EXT. 3036

NOTES: UNLESS OTHERWISE SPECIFIED

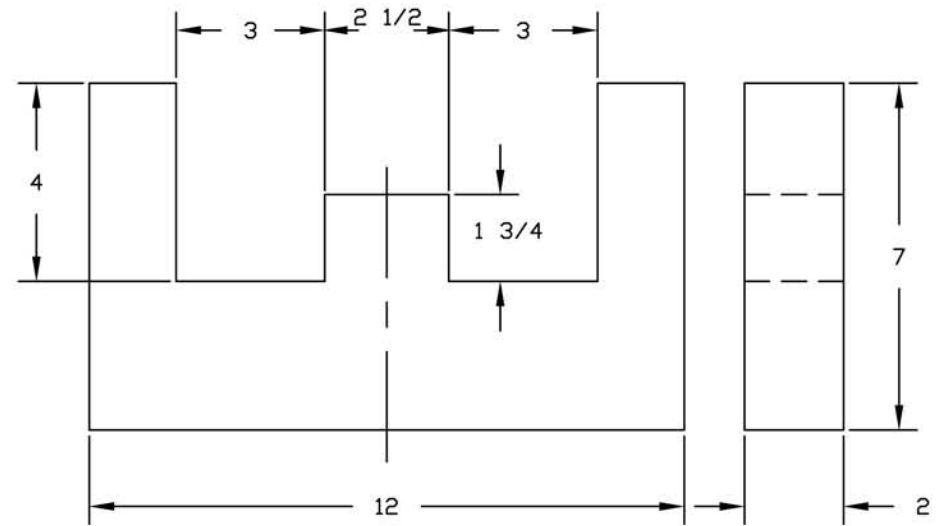
1: ALL DIMENSIONS ARE INCHES

2: 'E' SHAPE SUPPORT IS IDENTICAL TO CENTER SUPPORT, EXCEPT FOR HEIGHT OF CENTER LEG.

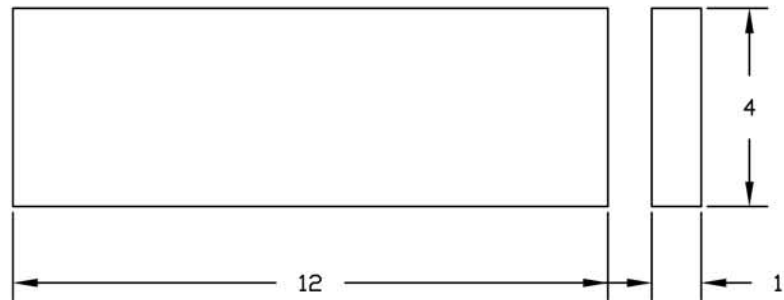
CENTER SUPPORT PMA F 022 SET = 2 PCS.



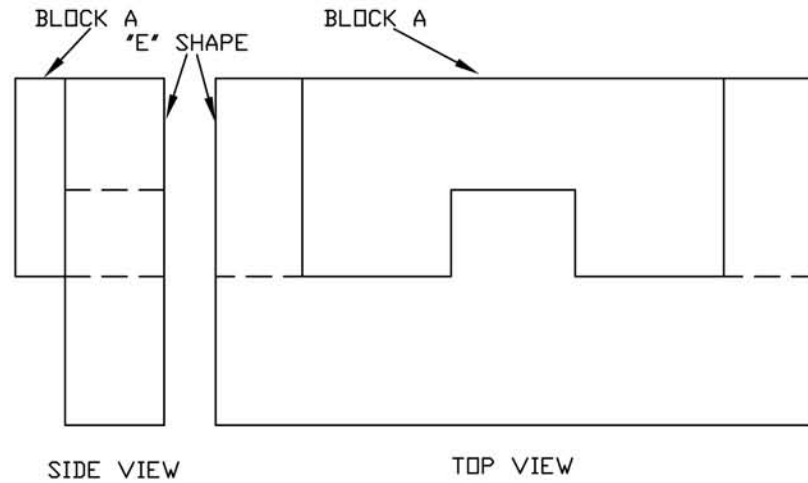
'E' SHAPE SUPPORT



BLOCK A



END SUPPORT PMA F 023 SET = 4 PCS.



SIDE VIEW

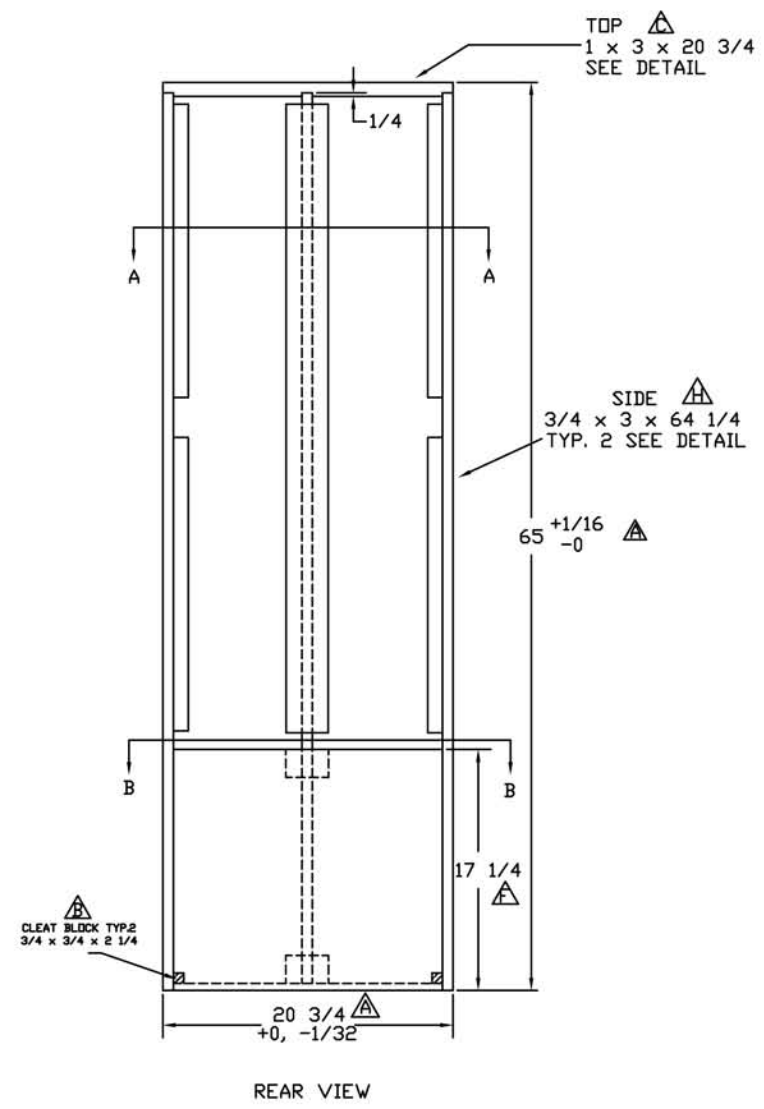
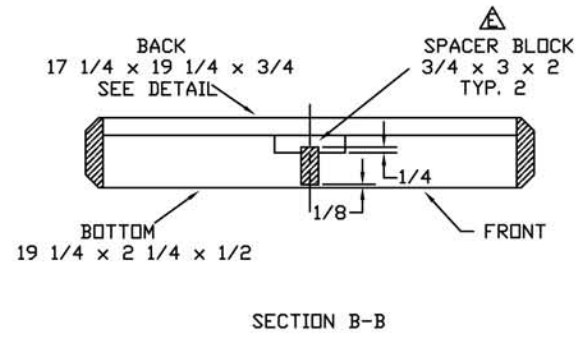
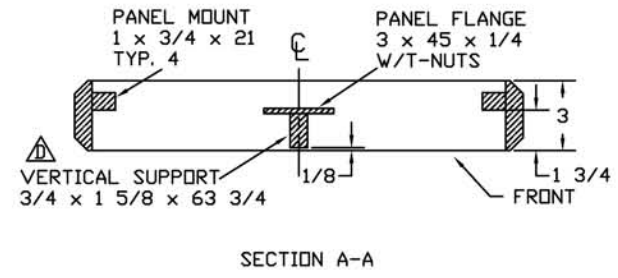
TOP VIEW

ACOUSTAT  
A DIVISION OF ROCKFORD CORP

2200/3300 FOAM

- NOTES: UNLESS OTHERWISE SPECIFIED  
 1: ALL DIMENSIONS ARE INCHES  
 2: MATERIALS:  
 1 MDF: TOP  
 3/4 MDF: SIDES, BACK, VERTICAL SUPPORT, SPACER BLOCKS  
 1/4 LUAN: PANEL FLANGES  
 ALDER: PANEL MOUNTS  
 3: SCALE: REAR VIEW-1/5  
 CROSS SECTIONS-1/3

- REVISIONS:  
 9/25/90  
 A. ADD TOLERANCES TO OVERALL SIZE  
 B. ADD CLEAT BLOCKS TO BOTTOM CORNERS  
 C. CHANGE STYLE OF TOP  
 D. CHANGE LENGTH OF VERTICAL SUPPORT  
 E. CHANGE STYLE OF SPACER BLOCK  
 F. CHANGE HEIGHT OF BACK  
 G. REVISE MATERIAL LIST  
 H. CHANGE LENGTH OF SIDE  
 I. TRANSFER DRAWING TO D SIZE



ANY TECHNICAL QUESTIONS REGARDING  
 THIS PRINT SHOULD BE REFERRED TO  
 ANDY SZABO (602)967-3565 EXT. 3036

PAGE 1 OF 2  
**ACOUSTAT**  
 A DIVISION OF ROCKFORD CORPORATION  
**SPECTRA 2200 FRAME**

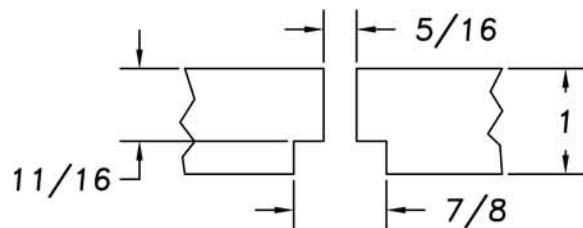
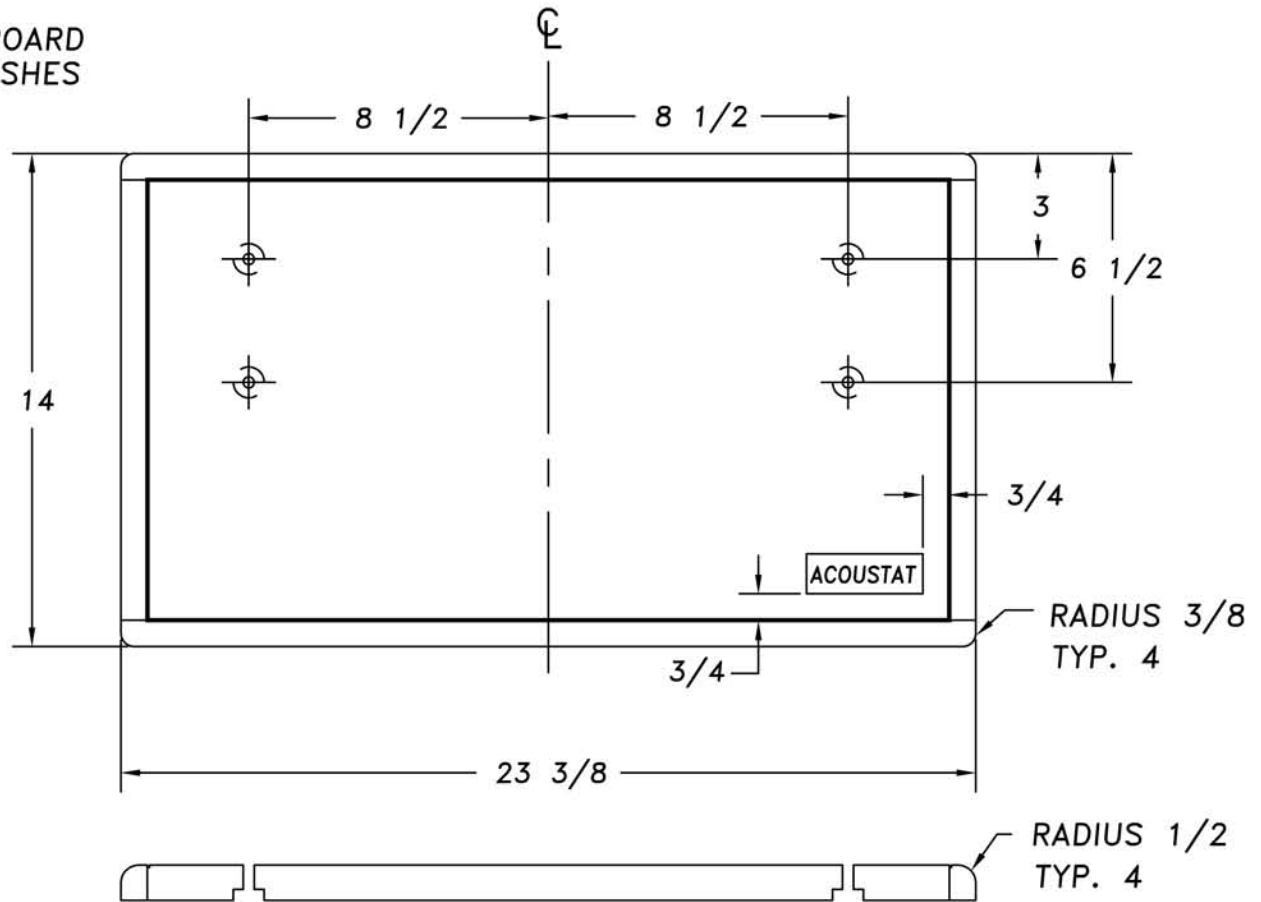


NOTES:

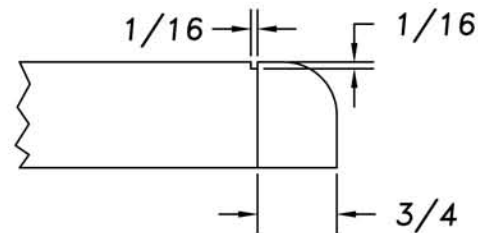
1. ALL DIMENSIONS INCHES
2. MATERIAL: OAK VENEER PARTICLE BOARD  
SOLID OAK BANDING, VARIOUS FINISHES
3. PART NUMBER SUFFIX:  
X= BSD- DARK OAK  
BSL- LIGHT OAK  
BSBL- BLACK OAK

REVISIONS:

6/12/90 CHANGED WIDTH FROM 23 1/4  
TO 23 3/8  
ADDED LOGO POSITION



COUNTERBORE DETAIL



EDGE DETAIL

ACOUSTAT  
A DIVISION OF ROCKFORD CORPORATION  
2200 WOOD BASE

ANY TECHNICAL QUESTIONS REGARDING  
THIS PRINT SHOULD BE REFERRED TO  
ANDY SZABO (602)967-3565 EXT. 3036