

**BLOC**

BETA BETA BETA

AUDIO PRO AUDIO PRO A

te élite élite

aynor Traynor

**BLOC50G  
BLOC100G  
BLOC100GT**

**SERVICE MANUAL**

ce élite élite

BETA BETA BETA

**SPECIFICATIONS****BLOC50G GUITAR AMP**

Power 50 Wrms  
Speaker 10-inch, 60 Watts, 4 ohms  
Input Sens. A chan (Gain & Ovd Max) 3 mV  
B chan (Gain Max) 25 mV  
Dimensions 41 cm W x 31 cm H x 26 cm D  
(16 in W x 12 in H x 10 in D)  
Weight 9 kg. (20 lbs.)

**SPECIFICATIONS****BLOC100G GUITAR AMP**

Power 100 Wrms  
Speaker 12-inch, 120 Watts, 4 ohms  
Input Sens. A chan (Gain & Ovd Max) 3 mV  
B chan (Gain Max) 25 mV  
Dimensions 41 cm W x 38 cm H x 28 cm D  
(16 in W x 15 in H x 11 in D)  
Weight 13.5 kg. (30 lbs.)

**SPECIFICATIONS****BLOC100GT GUITAR AMP**

Power 100 Wrms  
Speaker 2 x 10-inch, 60 Watts, 8 ohms  
Input Sens. A chan (Gain & Ovd Max) 3 mV  
B chan (Gain Max) 25 mV  
Dimensions 47 cm W x 51 cm H x 28 cm D  
(18.5 in W x 20 in H x 11 in D)  
Weight 18 kg. (40 lbs.)

## OPTIONAL LINE OUT JACK FOR BLOC 100G

To add the LINE OUT jack on the BLOC 100G is a very easy procedure for the musician. A space has already been provided on the printed circuit board at the factory. If you follow the steps listed below there should be no problem installing the LINE OUT jack.

(1)-Face the rear of the amp and locate the centre of the hole for the LINE OUT jack according to the diagram. Mark this with a pencil.

(2)-Remove the screws holding chassis into cabinet and slowly bring out the chassis about 6". Remove the reverb cables (mark input and output for proper orientation) and speaker wires.

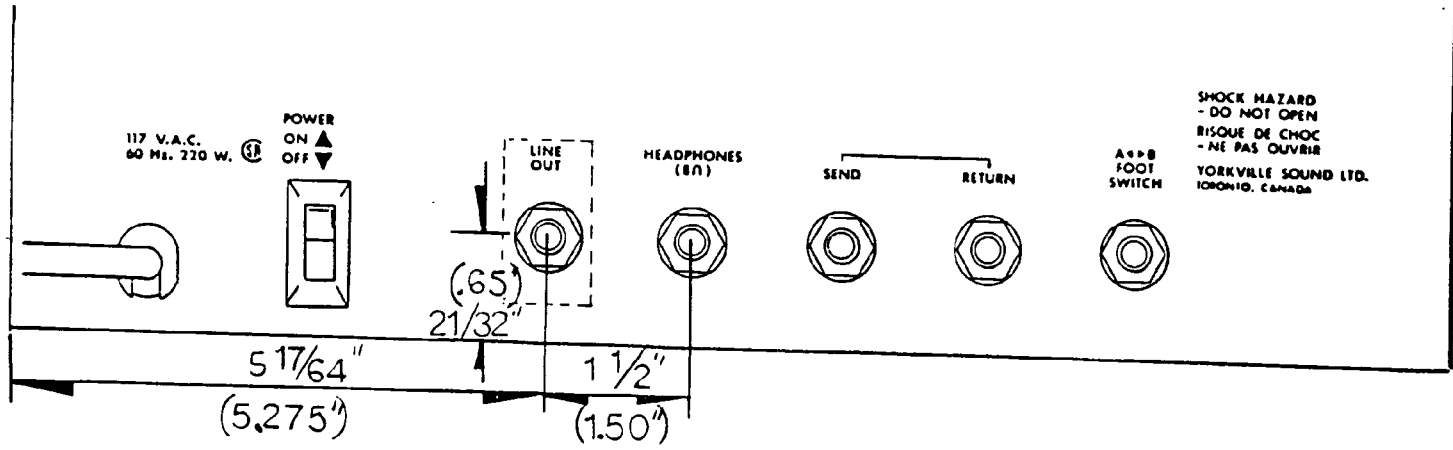
(3)-At this point the hole for the jack should be drilled. It is advisable to drill a smaller hole first to act as a guide hole. The final hole has to have a minimum diameter of 7/16 for the jack to fit. Check that any metal filings are removed from inside the amp.

(4)-Now look at the printed circuit board itself. You should see a section with several empty holes. This is where you will be working. It may be necessary to clear the holes of solder first. Add jack (YSL #3498) and 2 resistors, 1 4K7 1/4 watt (YSL #4827) and 1 470 Ohm 1/4 watt (YSL #4821). Solder these parts into printed circuit board. Check for cold solder joints.

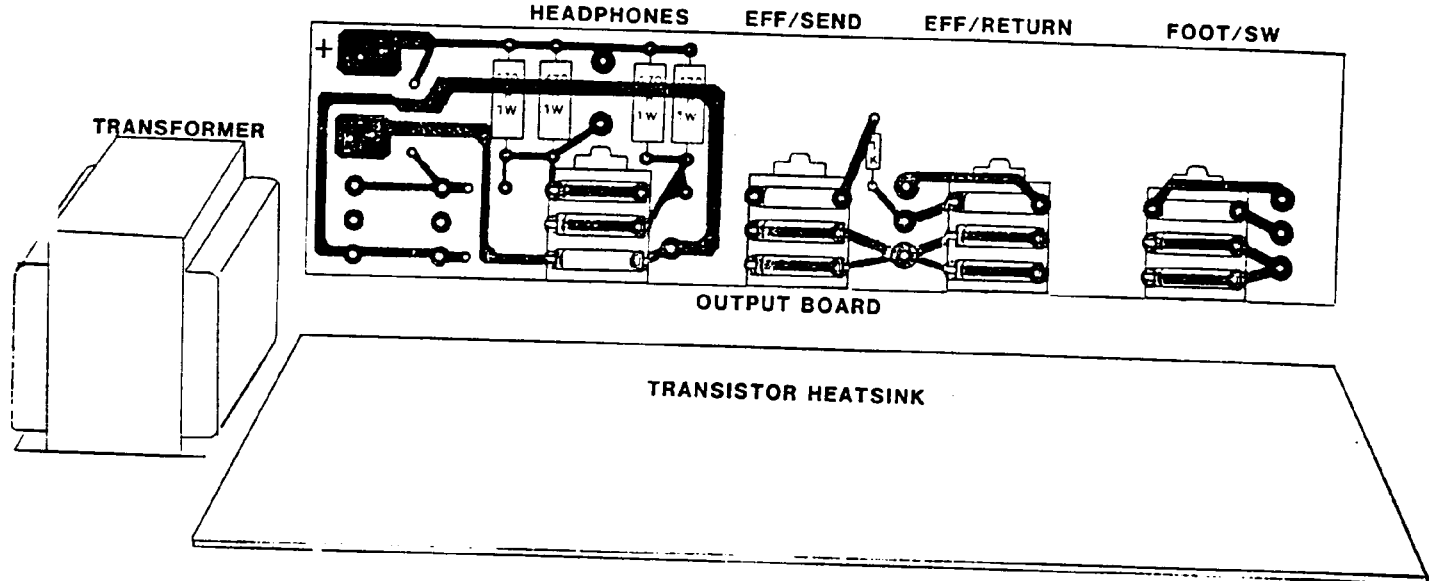
(5)-Rehook up reverb cables (with the proper orientation) and speaker wires, and carefully put chassis back in cabinet with screws originally removed.

If you followed all the instructions you should now have a LINE OUT jack in your BLOC 100G. If it is not working properly it means there is a problem with the soldering, location of resistors or the rehook up of reverb or speaker.

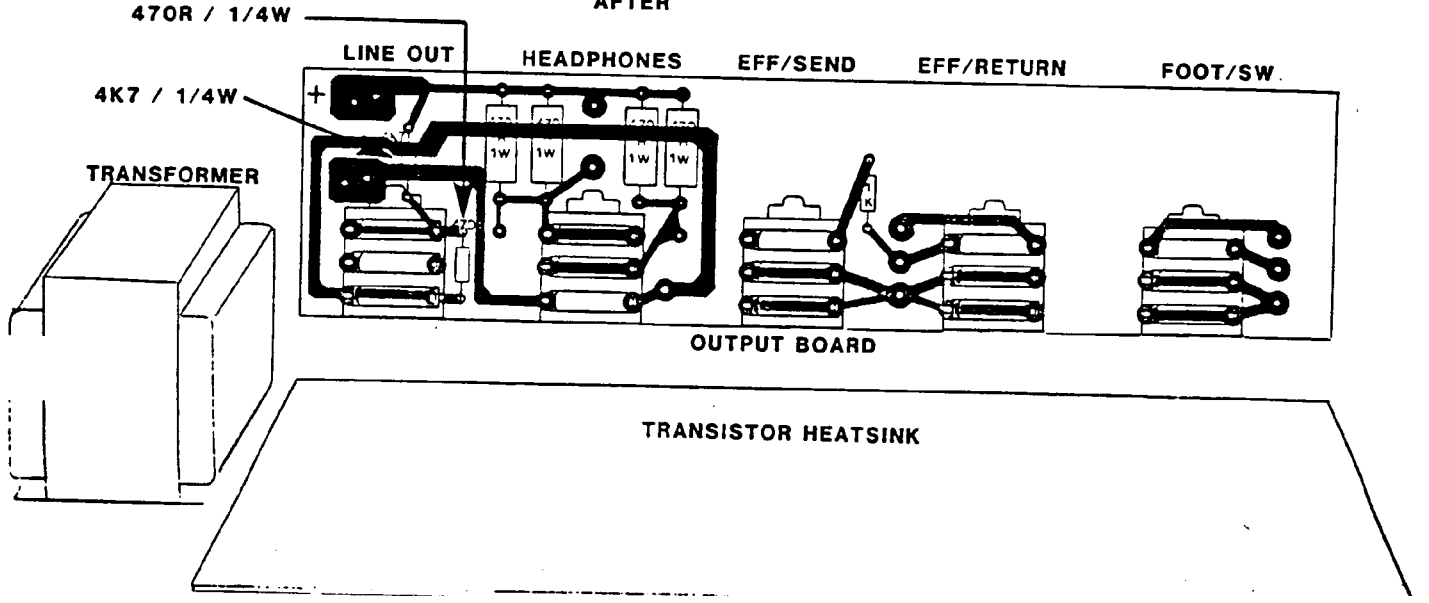
# BLOG400G



BEFORE



AFTER



**PARTS LIST****BLOC50G GUITAR AMP**

<b>PART#</b>	<b>DESCRIPTION</b>	<b>QUANTITY</b>
	M481A	
2452	3A FB FUSE (1/4 X 1 1/4)	2.000 EA
3418	PC MNT FUSE CLIP#3529	4.000 EA
3421	SHADOW SWITCH F2UEEKS	1.000 EA
3498	PC MOUNT JACK BLK PLASTIC	3.000 EA
3499	S2-BBB-PC-C PLASTIC JACK	3.000 EA
3501	B52200F006 COMP WASHER	2.000 EA
3511	#6 FLAT WASHER NYLON	3.000 EA
3539	SE34 EYELET UNPLATED RE AS M996P	64.000 EA
3680	FASTON PC MNT CLIP AMP 62741/1	2.000 EA
3806	B09002A001 RECT WASHER	2.000 EA
3807	T0220 WASHER	2.000 EA
3808	B52200F004 COMP WASHER	4.000 EA
3814	CRAYOTHERM PADS	2.000 EA
4530	10K REV/AUDIO ROTARY POT NATURAL	1.000 EA
4535	100K LINEAR ROTARY POT USE UP	1.000 EA
4536	250K LINEAR ROTARY POT YELLOW	3.000 EA
4538	50K REV/AUDIO ROTARY POT	1.000 EA
4539	50K AUDIO ROTARY POT	1.000 EA
4540	50K LINEAR ROTARY POT	1.000 EA
4599	WIRE JUMPER T&R	1.000 EA
4624	1K5 5% 1/2 WATT RESISTOR T&R	3.000 EA
4626	3K3 5% 1/2 WATT RESISTOR T&R	2.000 EA
4683	1K8 1 WATT 5% RESISTOR T&R	1.000 EA
4713	470 OHM 1 WATT 5% RESISTOR T&R	4.000 EA
4729	.27 OHM 5 WATT RESISTOR	2.000 EA
4804	3K 5% 1/4 WATT RESISTOR T&R	7.000 EA
4811	68 OHM 5% 1/4 WATT RESISTOR T&R	7.000 EA
4814	3K6 1/4 WATT 5% RESISTOR T&R	1.000 EA
4816	33 OHM 1/4 WATT 5% RESISTOR T&R	2.000 EA
4821	470 OHM 5% 1/4 WATT RESISTOR T&R	1.000 EA
4823	1K 5% 1/4 WATT RESISTOR T&R	6.000 EA
4824	1K5 5% 1/4 WATT RESISTOR T&R	5.000 EA
4827	4K7 5% 1/4 WATT RESISTOR T&R	5.000 EA
4829	10K 5% 1/4 WATT RESISTOR T&R	7.000 EA
4830	15K 5% 1/4 WATT RESISTOR T&R	2.000 EA
4832	22K 5% 1/4 WATT RESISTOR T&R	5.000 EA
4834	47K 5% 1/4 WATT RESISTOR T&R	7.000 EA
4838	100K 5% 1/4 WATT RESISTOR T&R	5.000 EA
4840	33K 5% 1/4 WATT RESISTOR T&R	1.000 EA
4844	1M 5% 1/4 WATT RESISTOR T&R	6.000 EA
4847	2K2 5% 1/4 WATT RESISTOR T&R	1.000 EA
4851	120K 5% 1/4 WATT RESISTOR T&R	1.000 EA
4852	100 OHM 5% 1/4 WATT RESISTOR T&R	4.000 EA
4855	330 OHM 5% 1/4 WATT RESISTOR T&R	6.000 EA
4875	10 OHM 1/4 WATT 5% RESISTOR T&R	1.000 EA
4885	20K 5% 1/4 WATT RESISTOR T&R	2.000 EA
4888	4M7 5% 1/4 WATT RESISTOR T&R	1.000 EA
5308	47N 25V TUBULAR CAP	2.000 EA
5404	27PF 56132279 TUB 50V 5844	1.000 EA
5408	47PF 56132479 TUB 50V 5819	4.000 EA
5410	100PF 56149101 TUB 50V 5822	1.000 EA
5412	220PF TUB 50V 56150221 5820	6.000 EA
5422	1000PF TUB 50V 56150102 5830	1.000 EA

**PARTS LIST****BLOC100GT GUITAR AMP**

<b>PART#</b>	<b>DESCRIPTION</b>	<b>QUANTITY</b>
5432	4700PF TUB 50V 56151472 5828/5884	1.000 EA
5434	6800PF TUB 50V 56154682	1.000 EA
5436	10KPF TUB 50V 56154103 5831/5834	6.000 EA
5512	.47UF/100V POLY CAP 36825474	1.000 EA
5600	.22UF/100V CAP 36825224	1.000 EA
5622	470UF/16V CAP 03135471	2.000 EA
5846	22UF/25V AX CAP 0326229	10.000 EA
5867	4700UF/40V CAP AX	2.000 EA
5874	100UF/25V RAD 03556101	3.000 EA
5876	1UF/63V AX 03028108	3.000 EA
5914	100UF/50V RD 03590019	2.000 EA
6420	BRIGHT RED LED SAR5731 1.7V 20MA	2.000 EA
6422	KBPC802 8AMP PC MOUNT BRIDGE	1.000 EA
6440	1N750A 4V7 500MW 5% ZENER	5.000 EA
6456	BF872 PNP TRANS T0202	1.000 EA
6457	BF871 NPN TRANS T0202	1.000 EA
6771	BC560C PNP SS TRANS T092E	4.000 EA
6774	BD139 NPN TRANS T0126	2.000 EA
6780	MPSA56 PNP SS TRANS T092	4.000 EA
6786	BC550C NPN SS TRANS T092E	1.000 EA
6800	MJ15016 PNP TRANSISTOR T03	1.000 EA
6801	MJ15015 NPN TRANSISTOR T03	1.000 EA
6824	1N5246B/BZX79C16 16V 500MW 5%	3.000 EA
6825	1N4148 75V 450MA DIODE	14.000 EA
6848	MPSA051MPSA06 NPN SS TRANS T092	3.000 EA
6850	2N5485 N CHAN FET SS TRANS T092	5.000 EA
6910	BC264D JFET	3.000 EA
6926	BD140 PNP TRANS T0126	1.000 EA
8661	BLITTON KNOB FLAT GREY	1.000 EA
8663	6 X 1/8 SPACER	4.000 EA
8792	4-40 X 1/2 PN PH MS ZN	2.000 EA
8793	4-40 HEX NUT ZINC	3.000 EA
8800	6-32 KEPS NUT ZINC	1.000 EA
8804	4 X 3/16 PH TYPE B ZN	2.000 EA
8822	6-32 X 9/16 PAN HEAD PH MS CAD	4.000 EA
8830	6-32 X 7/8 PAN HEAD PH MS BO	1.000 EA
8854	6-32 X 1/4 HEX NUT ZINC	4.000 EA
8861	4-40 X 3/8 PN PH MS BO	1.000 EA

**MECHANICAL PARTS**

3496	3/16" CLEAR TUBING PVC 105/16	.083 FT
3513	3/16" HEATSHRINK FIT 221-3/16	.125 FT
3516	CONNECTOR COVER	1.000 EA
3548	SPEAKER CLIP AMP	1.000 EA
3887	25 AWG 1 CONDUCTOR STRANDED SHIELD	.660 FT
3890	36" PREFAB CABLE RCA	2.000 EA
3943	GREEN 22 AWG STRANDED WIRE	.660 FT
3944	ORANGE 22 AWG STRANDED WIRE	.875 FT
3945	BLUE 22 AWG STRANDED WIRE	.375 FT
3946	YELLOW 22 AWG STRANDED WIRE	.830 FT
3947	RED 22 AWG STRANDED WIRE	3.420 FT
3952	BLACK 22 AWG STRANDED WIRE	5.700 FT
3953	WHITE 22 AWG STRANDED WIRE	1.420 FT

**PARTS LIST****BLOC100GT GUITAR AMP**

<b>PART#</b>	<b>DESCRIPTION</b>	<b>QUANTITY</b>
3955	BROWN 22 AWG STRANDED WIRE	.410 FT
5522	.047UF 125V AC 34149473	1.000 EA
7568	SPEAKER SPADE LUGS	6.000 EA
1310	BLOC80B/100G/GT XFMR ATC 8595	1.000 EA
2406	1.6A (1 6/10) SB (1/4 X 1 1/4) FUSE	1.000 EA
2451	N/A FUSE BLOCK	1.000 EA
3480	8' LINE CORD 3 PRONG 105F	1.000 EA
3492	AMP CONNECTOR	1.000 EA
3516	CONNECTOR COVER	1.000 EA
3544	SPEAKER CLIP HOLLINGSWORTH	1.000 EA
3658	MONO JACK BLK PLASTIC REAN	1.000 EA
3695	ROCKER SWITCH WHT/BLK CARLING	1.000 EA
3795	#8 GROUND LUG	2.000 EA
3810	3" CABLE TIE T18R TYTON	3.000 EA
3834	STRAIN RELIEF	1.000 EA
8448	SERIAL # 1.5X.5 PERMIX P5	1.000 SET
8488	3/8" INT TOOTH LOCKWASHER ZINC	8.000 EA
8600	3/8-32 HEX NUT DO NOT BUY	8.000 EA
8624	10-32 X 1/2 HH SL MS BO	4.000 EA
8660	ROTARY KNOB PLAIN-GREY	8.000 EA
8680	6-32 NYLON INSERT NUT ZINC	4.000 EA
8682	10-32 NYLON INSERT NUT ZINC	4.000 EA
8701	4-40 KEPS NUT ZINC	1.000 EA
8820	#8 FLAT WASHER B.O.	4.000 EA
8837	6-32 X 1/2 ROUND HEAD PH MS BO	4.000 EA
8861	4-40 X 3/8 PN PH MS BO	7.000 EA
700	BLOC100GT CARTON	1.000 EA
3582	SHORT REVERB SERIES 600 O.C.	1.000 EA
7318	10" 50 WATT 8 OHM SPEAKER	2.000 EA
8451	SMALL TRAYNOR LOGO	1.000 EA
8457	STRAP HANDLE REAN BLACK	1.000 EA
8462	SPEAKER TRIM CLIP TN-17	4.000 EA
8563	PLASTIC CORNER PIECE RIGHT BLK	4.000 EA
8564	PLASTIC CORNER PIECE LEFT BLK	4.000 EA
8578	3" ROLLED EDGE PORT	1.000 EA
8584	1/2" DCLON GREY 35PPI	2.300 SQFT
8587	1/2" ETHER FOAM GREY #1614	.875 SQFT
8756	10X3/4 PN PH WS TYPE A BO	8.000 EA
8764	8X1/2 PN PH WS TYPE A BO	12.000 EA
8785	8X3/4 OH PN TYPE A B/O	32.000 EA
8791	10-32 X 1 PN PH MS BO	8.000 EA
8843	10-32 X 1&1/4 FL PH MS BO	2.000 EA
8900	YORKVILLE SOUND WARRANTY CARD	1.000 EA
8820	#8 FLAT WASHER B.O.	4.000 EA
8992	BLOC50G/100G/100GT SCHEMATIC/MANUAL	1.000 EA
8857	6 X 1 PN PH TYPE A BO	4.000 EA
9898	BLACK LEATHERETTE	12.000 SQFT

# PARTS LIST BLOC100G GUITAR AMP

PART#	DESCRIPTION	QUANTITY
3952	BLACK 22 AWG STRANDED WIRE	3.080 FT
3953	WHITE 22 AWG STRANDED WIRE	1.380 FT
3955	BROWN 22 AWG STRANDED WIRE	.420 FT
5522	.047UF 125V AC 34149473	1.000 EA
7568	SPEAKER SPADE LUGS	4.000 EA
1310	BLOC80B/100G/GT XFMR ATC 8595	1.000 EA
2406	1.6A (1 6/10) SB (1/4 X 1 1/4) FUSE	1.000 EA
2451	N/A FUSE BLOCK	1.000 EA
3480	8' LINE CORD 3 PRONG 105F	1.000 EA
3492	AMP CONNECTOR	1.000 EA
3516	CONNECTOR COVER	1.000 EA
3544	SPEAKER CLIP HOLLINGSWORTH	1.000 EA
3695	ROCKER SWITCH WHT/BLK CARLING	1.000 EA
3795	#8 GROUND LUG	2.000 EA
3810	3" CABLE TIE T18R TYTON	3.000 EA
3834	STRAIN RELIEF	1.000 EA
8444	CSA APPROVAL LABELS 1 3/8 X 7/8	1.000 EA
8448	SERIAL # 1.5X.5 PERMIX P5	1.000 SET
8488	3/8" INT TOOTH LOCKWASHER ZINC	8.000 EA
8624	10-32 X 1/2 HH SL MS BO	4.000 EA
8660	ROTARY KNOB PLAIN-GREY	8.000 EA
8680	6-32 NYLON INSERT NUT ZINC	4.000 EA
8682	10-32 NYLON INSERT NUT ZINC	4.000 EA
8701	4-40 KEPS NUT ZINC	1.000 EA
8820	#8 FLAT WASHER B.O.	4.000 EA
8837	6-32 X 1/2 ROUND HEAD PH MS BO	4.000 EA
8861	4-40 X 3/8 PN PH MS BO	1.000 EA
691	BLOC100G CARTON	1.000 EA
3582	SHORT REVERB SERIES 600 O.C.	1.000 EA
7321	12" 100 WATT 4 OHM SPEAKER	1.000 EA
8451	SMALL TRAYNOR LOGO	1.000 EA
8457	STRAP HANDLE REAN BLACK	1.000 EA
8563	PLASTIC CORNER PIECE RIGHT BLK	4.000 EA
8564	PLASTIC CORNER PIECE LEFT BLK	4.000 EA
8578	3" ROLLED EDGE PORT	1.000 EA
8584	1/2" DCLON GREY 35PPI	1.700 SQFT
8587	1/2" ETHER FOAM GREY #1614	.875 SQFT
8764	8X1/2 PN PH WS TYPE A BO	12.000 EA
8785	8X3/4 OH PN TYPE A B/O	32.000 EA
8791	10-32 X 1 PN PH MS BO	4.000 EA
8820	#8 FLAT WASHER B.O.	4.000 EA
8843	10-32 X 1&1/4 FL PH MS BO	2.000 EA
8857	6 X 1 PN PH TYPE A BO	4.000 EA
8876	6X1 1/2 PN PH MS TYPE A BO	4.000 EA
8900	YORKVILLE SOUND WARRANTY CARD	1.000 EA
8991	BLOC50G/100G SCHEMATIC	1.000 EA
8992	BLOC50G/100G/100GT SCHEMATIC/MANUAL	1.000 EA
9898	BLACK LEATHERETTE	9.400 SQFT



**PARTS LIST****BLOC100GT GUITAR AMP**

<b>PART#</b>	<b>DESCRIPTION</b>	<b>QUANTITY</b>
	M481 C	
2410	4A FB FUSE (1/4 X 1 1/4)	2.000 EA
3418	PC MNT FUSE CLIP#3529	4.000 EA
3421	SHADOW SWITCH F2UEEKS	1.000 EA
3498	PC MOUNT JACK BLK PLASTIC	3.000 EA
3499	S2-BBB-PC-C PLASTIC JACK	4.000 EA
3501	B52200F006 COMP WASHER	3.000 EA
3511	#6 FLAT WASHER NYLON	4.000 EA
3539	SE34 EYELET UNPLATED RE AS M996P	40.000 EA
3561	CABLE CLAMP STEEL HALE -.169 ZP	1.000 EA
3680	FASTON PC MNT CLIP AMP 62741/1	2.000 EA
3806	B09002A001 RECT WASHER	2.000 EA
3807	T0220 WASHER	2.000 EA
3808	B52200F004 COMP WASHER	4.000 EA
3815	T03 PREGREASED MICA WASHER	2.000 EA
4530	10K REV/AUDIO ROTARY POT NATURAL	1.000 EA
4535	100K LINEAR ROTARY POT USE UP	1.000 EA
4536	250K LINEAR ROTARY POT YELLOW	3.000 EA
4538	50K REV/AUDIO ROTARY POT	1.000 EA
4539	50K AUDIO ROTARY POT	1.000 EA
4540	50K LINEAR ROTARY POT	1.000 EA
4599	WIRE JUMPER T&R	1.000 EA
4624	1K5 5% 1/2 WATT RESISTOR T&R	3.000 EA
4626	3K3 5% 1/2 WATT RESISTOR T&R	2.000 EA
4683	1K8 1 WATT 5% RESISTOR T&R	1.000 EA
4713	470 OHM 1 WATT 5% RESISTOR T&R	4.000 EA
4729	.27 OHM 5 WATT RESISTOR	2.000 EA
4804	3K 5% 1/4 WATT RESISTOR T&R	8.000 EA
4811	68 OHM 5% 1/4 WATT RESISTOR T&R	5.000 EA
4816	33 OHM 1/4 WATT 5% RESISTOR T&R	2.000 EA
4821	470 OHM 5% 1/4 WATT RESISTOR T&R	2.000 EA
4823	1K 5% 1/4 WATT RESISTOR T&R	6.000 EA
4824	1K5 5% 1/4 WATT RESISTOR T&R	5.000 EA
4827	4K7 5% 1/4 WATT RESISTOR T&R	6.000 EA
4829	10K 5% 1/4 WATT RESISTOR T&R	7.000 EA
4830	15K 5% 1/4 WATT RESISTOR T&R	2.000 EA
4832	22K 5% 1/4 WATT RESISTOR T&R	5.000 EA
4834	47K 5% 1/4 WATT RESISTOR T&R	7.000 EA
4838	100K 5% 1/4 WATT RESISTOR T&R	6.000 EA
4840	33K 5% 1/4 WATT RESISTOR T&R	1.000 EA
4844	1M 5% 1/4 WATT RESISTOR T&R	6.000 EA
4847	2K2 5% 1/4 WATT RESISTOR T&R	1.000 EA
4852	100 OHM 5% 1/4 WATT RESISTOR T&R	4.000 EA
4855	330 OHM 5% 1/4 WATT RESISTOR T&R	9.000 EA
4875	10 OHM 1/4 WATT 5% RESISTOR T&R	1.000 EA
4885	20K 5% 1/4 WATT RESISTOR T&R	2.000 EA
4888	4M7 5% 1/4 WATT RESISTOR T&R	1.000 EA
5308	47N 25V TUBULAR CAP	2.000 EA
5404	27PF 56132279 TUB 50V 5844	1.000 EA
5408	47PF 56132479 TUB 50V 5819	3.000 EA
5410	100PF 56149101 TUB 50V 5822	2.000 EA
5412	220PF TUB 50V 56150221 5820	5.000 EA
5413	390PF 50V TUB CAP	1.000 EA
5422	1000PF TUB 50V 56150102 5830	1.000 EA
5426	2200PF TUB 50V 56151222 5836/5881	1.000 EA

# PARTS LIST BLOC100G GUITAR AMP

PART#	DESCRIPTION	QUANTITY
M481 B		
2410	4A FB FUSE (1/4 X 1 1/4)	2.000 EA
3418	PC MNT FUSE CLIP#3529	4.000 EA
3421	SHADOW SWITCH F2UEEKS	1.000 EA
3498	PC MOUNT JACK BLK PLASTIC	3.000 EA
3499	S2-BBB-PC-C PLASTIC JACK	3.000 EA
3501	B52200F006 COMP WASHER	3.000 EA
3511	#6 FLAT WASHER NYLON	4.000 EA
3539	SE34 EYELET UNPLATED RE AS M996P	40.000 EA
3561	CABLE CLAMP STEEL HALE -.169 ZP	1.000 EA
3680	FASTON PC MNT CLIP AMP 62741/1	2.000 EA
3806	B09002A001 RECT WASHER	2.000 EA
3807	T0220 WASHER	2.000 EA
3808	B52200F004 COMP WASHER	4.000 EA
3815	T03 PREGREASED MICA WASHER	2.000 EA
4530	10K REV/AUDIO ROTARY POT NATURAL	1.000 EA
4535	100K LINEAR ROTARY POT USE UP	1.000 EA
4536	250K LINEAR ROTARY POT YELLOW	3.000 EA
4538	50K REV/AUDIO ROTARY POT	1.000 EA
4539	50K AUDIO ROTARY POT	1.000 EA
4540	50K LINEAR ROTARY POT	1.000 EA
4599	WIRE JUMPER T&R	1.000 EA
4624	1K5 5% 1/2 WATT RESISTOR T&R	3.000 EA
4626	3K3 5% 1/2 WATT RESISTOR T&R	2.000 EA
4683	1K8 1 WATT 5% RESISTOR T&R	1.000 EA
4713	470 OHM 1 WATT 5% RESISTOR T&R	4.000 EA
4729	.27 OHM 5 WATT RESISTOR	2.000 EA
4804	3K 5% 1/4 WATT RESISTOR T&R	8.000 EA
4811	68 OHM 5% 1/4 WATT RESISTOR T&R	5.000 EA
4816	33 OHM 1/4 WATT 5% RESISTOR T&R	2.000 EA
4821	470 OHM 5% 1/4 WATT RESISTOR T&R	1.000 EA
4823	1K 5% 1/4 WATT RESISTOR T&R	6.000 EA
4824	1K5 5% 1/4 WATT RESISTOR T&R	5.000 EA
4827	4K7 5% 1/4 WATT RESISTOR T&R	5.000 EA
4829	10K 5% 1/4 WATT RESISTOR T&R	7.000 EA
4830	15K 5% 1/4 WATT RESISTOR T&R	2.000 EA
4832	22K 5% 1/4 WATT RESISTOR T&R	5.000 EA
4834	47K 5% 1/4 WATT RESISTOR T&R	7.000 EA
4838	100K 5% 1/4 WATT RESISTOR T&R	6.000 EA
4840	33K 5% 1/4 WATT RESISTOR T&R	1.000 EA
4844	1M 5% 1/4 WATT RESISTOR T&R	6.000 EA
4847	2K2 5% 1/4 WATT RESISTOR T&R	1.000 EA
4852	100 OHM 5% 1/4 WATT RESISTOR T&R	4.000 EA
4855	330 OHM 5% 1/4 WATT RESISTOR T&R	9.000 EA
4875	10 OHM 1/4 WATT 5% RESISTOR T&R	1.000 EA
4885	20K 5% 1/4 WATT RESISTOR T&R	2.000 EA
4888	4M7 5% 1/4 WATT RESISTOR T&R	1.000 EA
5308	47N 25V TUBULAR CAP	2.000 EA
5404	27PF 56132279 TUB 50V 5844	1.000 EA
5408	47PF 56132479 TUB 50V 5819	2.000 EA
5410	100PF 56149101 TUB 50V 5822	1.000 EA
5412	220PF TUB 50V 56150221 5820	5.000 EA
5413	390PF 50V TUB CAP	1.000 EA
5422	1000PF TUB 50V 56150102 5830	1.000 EA
5426	2200PF TUB 50V 56151222 5836/5881	1.000 EA

# PARTS LIST BLOC100G GUITAR AMP

PART #	DESCRIPTION	QUANTITY
5432	4700PF TUB 50V 56151472 5828/5884	1.000 EA
5434	6800PF TUB 50V 56154682	1.000 EA
5436	10KPF TUB 50V 56154103 5831/5834	6.000 EA
5512	.47UF/100V POLY CAP 36825474	1.000 EA
5600	.22UF/100V CAP 36825224	1.000 EA
5622	470UF/16V CAP 03135471	2.000 EA
5846	22UF/25V AX CAP 0326229	10.000 EA
5867	4700UF/40V CAP AX	2.000 EA
5872	100UF/25V AX CAP 03126101	3.000 EA
5873	2200UF/40V AX CAP 02117222	2.000 EA
5874	100UF/25V RAD 03556101	3.000 EA
5876	1UF/63V AX 03028108	3.000 EA
5914	100UF/50V RD 03590019	2.000 EA
6420	BRIGHT RED LED SAR5731 1.7V 20MA	2.000 EA
6422	KBPC802 8AMP PC MOUNT BRIDGE	1.000 EA
6440	1N750A 4V7 500MW 5% ZENER	5.000 EA
6456	BF872 PNP TRANS T0202	1.000 EA
6457	BF871 NPN TRANS T0202	1.000 EA
6771	BC560C PNP SS TRANS T092E	4.000 EA
6774	BD139 NPN TRANS T0126	2.000 EA
6780	MPSA56 PNP SS TRANS T092	4.000 EA
6786	BC550C NPN SS TRANS T092E	1.000 EA
8793	4-40 HEX NUT ZINC	3.000 EA
6800	MJ15016 PNP TRANSISTOR T03	1.000 EA
6801	MJ15015 NPN TRANSISTOR T03	1.000 EA
8804	4 X 3/16 PH TYPE B ZN	2.000 EA
6824	1N5246B/BZX79C16 16V 500MW 5%	3.000 EA
6825	1N4148 75V 450MA DIODE	14.000 EA
6848	MPSA051MPSA06 NPN SS TRANS T092	3.000 EA
6850	2N5485 N CHAN FET SS TRANS T092	5.000 EA
6910	BC264D JFET	3.000 EA
6926	BD140 PNP TRANS T0126	1.000 EA
8485	#6 SPLIT WASHER ZINC	6.000 EA
8661	BUTTON KNOB FLAT GREY	1.000 EA
8663	6 X 1/8 SPACER	4.000 EA
8701	4-40 KEPS NUT ZINC	3.000 EA
8792	4-40 X 1/2 PN PH MS ZN	2.000 EA
8800	6-32 KEPS NUT ZINC	1.000 EA
8822	6-32 X 9/16 PAN HEAD PH MS CAD	4.000 EA
8830	6-32 X 7/8 PAN HEAD PH MS BO	1.000 EA
8854	6-32 X 1/4 HEX NUT ZINC	4.000 EA
8861	4-40 X 3/8 PN PH MS BO	1.000 EA

## MECHANICAL PARTS

3496	3/16" CLEAR TUBING PVC 105/16	.083 FT
3513	3/16" HEATSHRINK FIT 221-3/16	.100 FT
3548	SPEAKER CLIP AMP	1.000 EA
3887	25 AWG 1 CONDUCTOR STRANDED SHIELD	.750 FT
3890	36" PREFAB CABLE RCA	2.000 EA
3943	GREEN 22 AWG STRANDED WIRE	.660 FT
3944	ORANGE 22 AWG STRANDED WIRE	.420 FT
3946	YELLOW 22 AWG STRANDED WIRE	.830 FT
3947	RED 22 AWG STRANDED WIRE	1.330 FT

# PARTS LIST BLOC50G GUITAR AMP

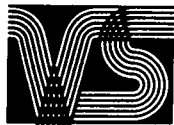
PART#	DESCRIPTION	QUANTITY
5426	2200PF TUB 50V 56151222 5836/5881	1.000 EA
5432	4700PF TUB 50V 56151472 5828/5884	1.000 EA
5434	6800PF TUB 50V 56154682	1.000 EA
5436	10KPF TUB 50V 56154103 5831/5834	6.000 EA
5512	.47UF/100V POLY CAP 36825474	1.000 EA
5600	.22UF/100V CAP 36825224	1.000 EA
5622	470UF/16V CAP 03135471	2.000 EA
5846	22UF/25V AX CAP 0326229	10.000 EA
5873	2200UF/40V AX CAP 02117222	2.000 EA
5874	100UF/25V RAD 03556101	3.000 EA
5876	1UF/63V AX 03028108	2.000 EA
5914	100UF/50V RD 03590019	2.000 EA
6420	BRIGHT RED LED SAR5731 1.7V 20MA	2.000 EA
6422	KBPC802 8AMP PC MOUNT BRIDGE	1.000 EA
6440	1N750A 4V7 500MW 5% ZENER	5.000 EA
6456	BF872 PNP TRANS T0202	1.000 EA
6457	BF871 NPN TRANS T0202	1.000 EA
6771	BC560C PNP SS TRANS T092E	4.000 EA
6774	BD139 NPN TRANS T0126	2.000 EA
6780	MPSA56 PNP SS TRANS T092	4.000 EA
6786	BC550C NPN SS TRANS T092E	1.000 EA
6791	2N3055 NPN TRANSISTOR T03	1.000 EA
6792	MJ2955 PNP TRANSISTOR T03	1.000 EA
8793	4-40 HEX NUT ZINC	2.000 EA
6824	1N5246B/BZX79C16 16V 500MW 5%	3.000 EA
6825	1N4148 75V 450MA DIODE	13.000 EA
6848	MPSA051MPSA06 NPN SS TRANS T092	3.000 EA
6850	2N5485 N CHAN FET SS TRANS T092	5.000 EA
6910	BC264D JFET	3.000 EA
6926	BD140 PNP TRANS T0126	1.000 EA
8485	#6 SPLIT WASHER ZINC	6.000 EA
8661	BUTTON KNOB FLAT GREY	1.000 EA
8663	6 X 1/8 SPACER	4.000 EA
8792	4-40 X 1/2 PN PH MS ZN	2.000 EA
8800	6-32 KEPS NUT ZINC	1.000 EA
8804	4 X 3/16 PH TYPE B ZN	2.000 EA
8822	6-32 X 9/16 PAN HEAD PH MS CAD	4.000 EA
8830	6-32 X 7/8 PAN HEAD PH MS B0	1.000 EA
8854	6-32 X 1/4 HEX NUT ZINC	4.000 EA

## MECHANICAL PARTS

3496	3/16" CLEAR TUBING PVC 105/16	.083 FT
3513	3/16" HEATSHRINK FIT 221-3/16	.090 FT
3516	CONNECTOR COVER	1.000 EA
3548	SPEAKER CLIP AMP	1.000 EA
3887	25 AWG 1 CONDUCTOR STRANDED SHIELD	.660 FT
3890	36" PREFAB CABLE RCA	1.000 EA
3943	GREEN 22 AWG STRANDED WIRE	.660 FT
3944	ORANGE 22 AWG STRANDED WIRE	.880 FT
3945	BLUE 22 AWG STRANDED WIRE	.360 FT
3946	YELLOW 22 AWG STRANDED WIRE	.830 FT
3947	RED 22 AWG STRANDED WIRE	1.330 FT
3952	BLACK 22 AWG STRANDED WIRE	3.580 FT
3953	WHITE 22 AWG STRANDED WIRE	1.420 FT

**PARTS LIST****BLOC50G GUITAR AMP**

<b>PART#</b>	<b>DESCRIPTION</b>	<b>QUANTITY</b>
3955	BROWN 22 AWG STRANDED WIRE	.420 FT
5522	.047UF 125V AC 34149473	1.000 EA
7568	SPEAKER SPADE LUGS	4.000 EA
1274	BLOC50G XFMR CW ENDBELLS ATC 9019	1.000 EA
2449	1A SB FUSE (1/4 X 1 1/4)	1.000 EA
2451	N/A FUSE BLOCK	1.000 EA
3480	8' LINE CORD 3 PRONG 105F	1.000 EA
3492	AMP CONNECTOR	1.000 EA
3516	CONNECTOR COVER	1.000 EA
3544	SPEAKER CLIP HOLLINGSWORTH	1.000 EA
3695	ROCKER SWITCH WHT/BLK CARLING	1.000 EA
3795	#8 GROUND LUG	2.000 EA
3810	3" CABLE TIE T18R TYTON	3.000 EA
3834	STRAIN RELIEF	1.000 EA
8448	SERIAL # 1.5X.5 PERMIX P5	1.000 SET
8488	3/8" INT TOOTH LOCKWASHER ZINC	8.000 EA
8660	ROTARY KNOB PLAIN-GREY	8.000 EA
8680	6-32 NYLON INSERT NUT ZINC	4.000 EA
8681	8-32 NYLON INSERT NUT ZINC	4.000 EA
8701	4-40 KEPS NUT ZINC	1.000 EA
8820	#8 FLAT WASHER B.O.	4.000 EA
8837	6-32 X 1/2 ROUND HEAD PH MS B0	4.000 EA
8848	8-32 X 1/2 1W SL MS B0	4.000 EA
8861	4-40 X 3/8 PN PH MS B0	1.000 EA
690	BLOC50G CARTON	1.000 EA
3560	REVERB SPRING	4.000 EA
3582	SHORT REVERB SERIES 600 O.C.	1.000 EA
3833	6 X 3/8 NY STANDOFF	4.000 EA
7323	10" 50 WATT 4 OHM SPEAKER	1.000 EA
8451	SMALL TRAYNOR LOGO	1.000 EA
8457	STRAP HANDLE REAN BLACK	1.000 EA
8563	PLASTIC CORNER PIECE RIGHT BLK	4.000 EA
8564	PLASTIC CORNER PIECE LEFT BLK	4.000 EA
8584	1/2" DCLON GREY 35PPI	1.350 SQFT
8587	1/2" ETHER FOAM GREY #1614	.550 SQFT
8754	10 X 3/4 PN PH TYPE A ZN	4.000 EA
8756	10X3/4 PN PH WS TYPE A B0	4.000 EA
8764	8X1/2 PN PH WS TYPE A B0	8.000 EA
8785	8X3/4 OH PN TYPE A B/O	32.000 EA
8843	10-32 X 1&1/4 FL PH MS B0	2.000 EA
8857	6 X 1 PN PH TYPE A B0	4.000 EA
8876	6X1 1/2 PN PH MS TYPE A B0	4.000 EA
8900	YORKVILLE SOUND WARRANTY CARD	1.000 EA
8992	BLOC50G/100G/100GT SCHEMATIC/MANUAL	1.000 EA
9898	BLACK LEATHERETTE	7.400 SQFT



**YORKVILLE SOUND**

OPTIONAL LINE OUT JACK FOR BLOC 100G

To add the LINE OUT jack on the BLOC 100G is a very easy procedure for the musician. A space has already been provided on the printed circuit board at the factory. If you follow the steps listed below there should be no problem installing the LINE OUT jack.

(1)-Face the rear of the amp and locate the centre of the hole for the LINE OUT jack according to the diagram. Mark this with a pencil.

(2)-Remove the screws holding chassis into cabinet and slowly bring out the chassis about 6". Remove the reverb cables (mark input and output for proper orientation) and speaker wires.

(3)-At this point the hole for the jack should be drilled. It is advisable to drill a smaller hole first to act as a guide hole. The final hole has to have a minimum diameter of 7/16 for the jack to fit. Check that any metal filings are removed from inside the amp.

(4)-Now look at the printed circuit board itself. You should see a section with several empty holes. This is where you will be working. It may be necessary to clear the holes of solder first. Add jack (YSL #3498) and 2 resistors, 1 4K7 1/4 watt (YSL #4827) and 1 470 Ohm 1/4 watt (YSL #4821). Solder these parts into printed circuit board. Check for cold solder joints.

(5)-Rehook up reverb cables (with the proper orientation) and speaker wires, and carefully put chassis back in cabinet with screws originally removed.

If you followed all the instructions you should now have a LINE OUT jack in your BLOC 100G. If it is not working properly it means there is a problem with the soldering, location of resistors or the rehook up of reverb or speaker.



# BLOG400G

SHOCK HAZARD  
 - DO NOT OPEN  
 RISQUE DE CHOC  
 - NE PAS OUVRIR  
 YORKVILLE SOUND LTD.  
 TORONTO, CANADA

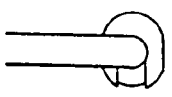
117 V.A.C.  
 60 Hz. 220 W.



HEADPHONES (8Ω)

SEND RETURN

A4-B FOOT SWITCH

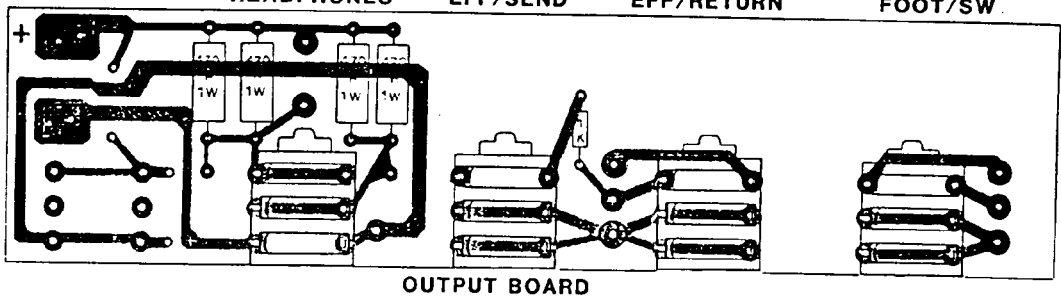


$5\frac{17}{64}$ "  
 (5.275")

$\frac{21}{32}$ "  
 1  $\frac{1}{2}$ "  
 (1.50")

BEFORE

HEADPHONES EFF/SEND EFF/RETURN FOOT/SW



TRANSFORMER

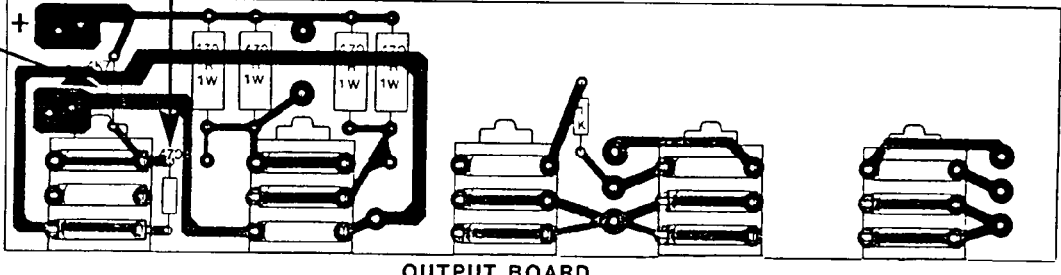
OUTPUT BOARD

TRANSISTOR HEATSINK

AFTER

470R / 1/4W

LINE OUT HEADPHONES EFF/SEND EFF/RETURN FOOT/SW

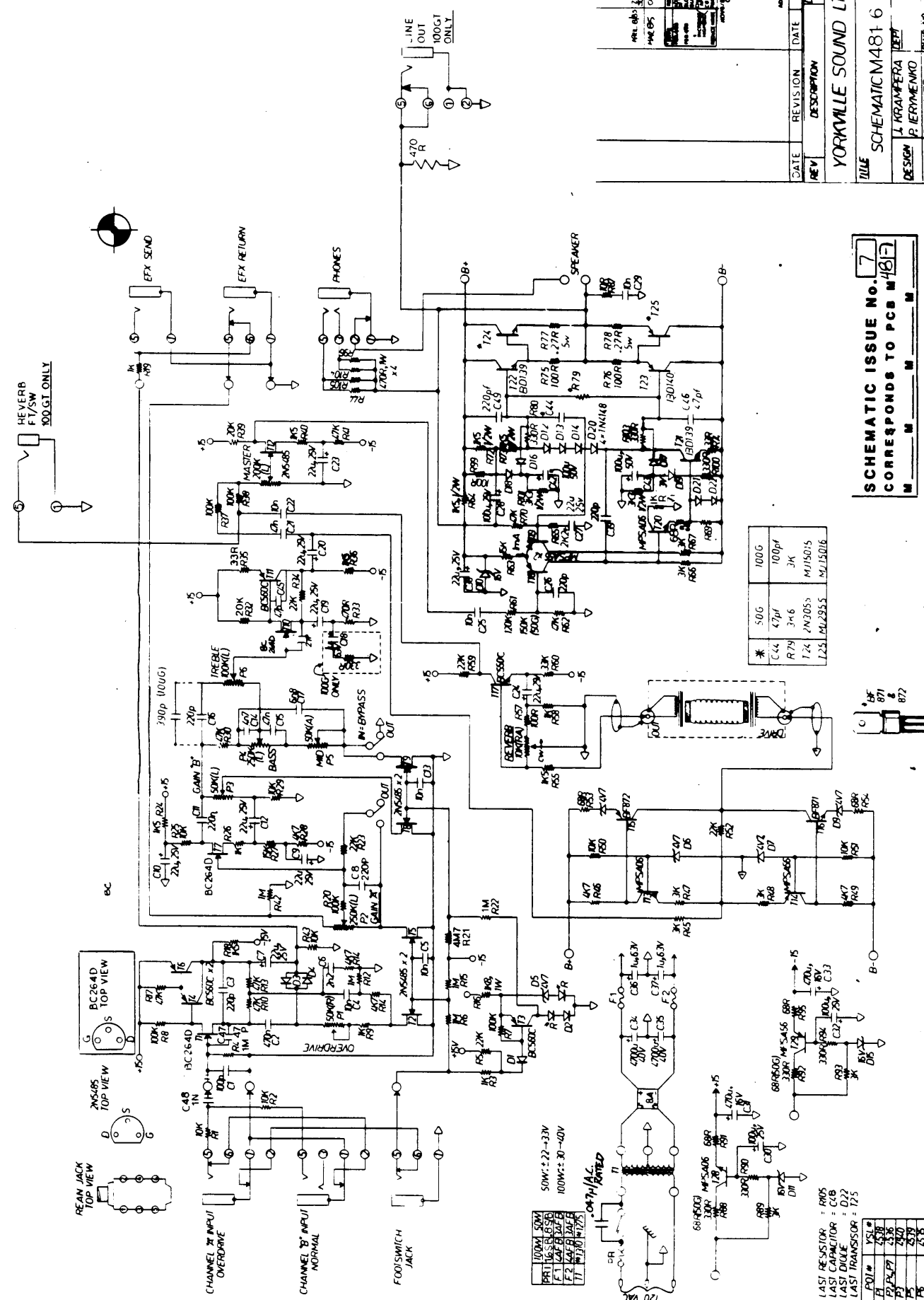


4K7 / 1/4W

TRANSFORMER

OUTPUT BOARD

TRANSISTOR HEATSINK



REV	DESCRIPTION	DATE	DESIGNER	DRAWN
1				
2				
3				
4				
5				
6				
7				
8				
9				
10				

TITLE: SCHEMATIC M481-6  
 MODEL NO: BLOC 100G/GT  
 PART NO: BLOC 50G  
 DESIGN: J. KRAMPFERA  
 CHECK: P. IEREMENKO  
 DRAWN: B. HILLIER  
 DATE: OCT 1950

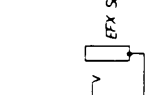
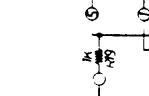
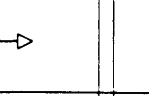
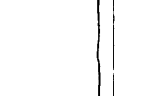
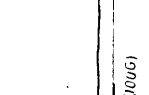
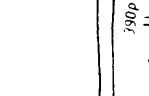
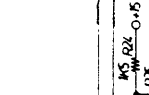
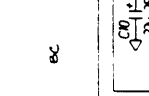
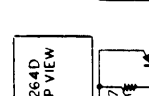
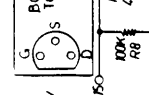
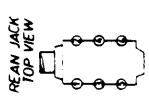
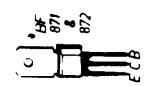
YORKVILLE SOUND LTD.  
 SCHEMATIC ISSUE NO. 7  
 CORRESPONDS TO PCB M481-7

* 50G	100G
C44	100pf
R79	3K6
T24	MJ15015
L25	MJ2955
	MJ15016

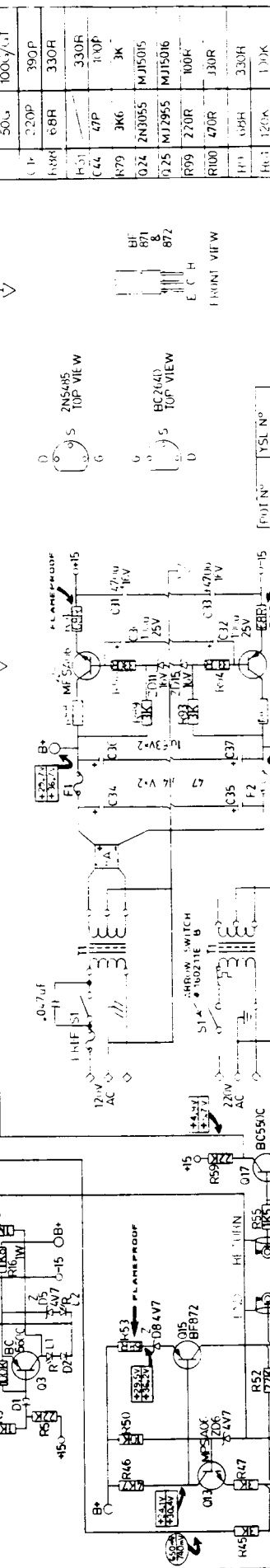
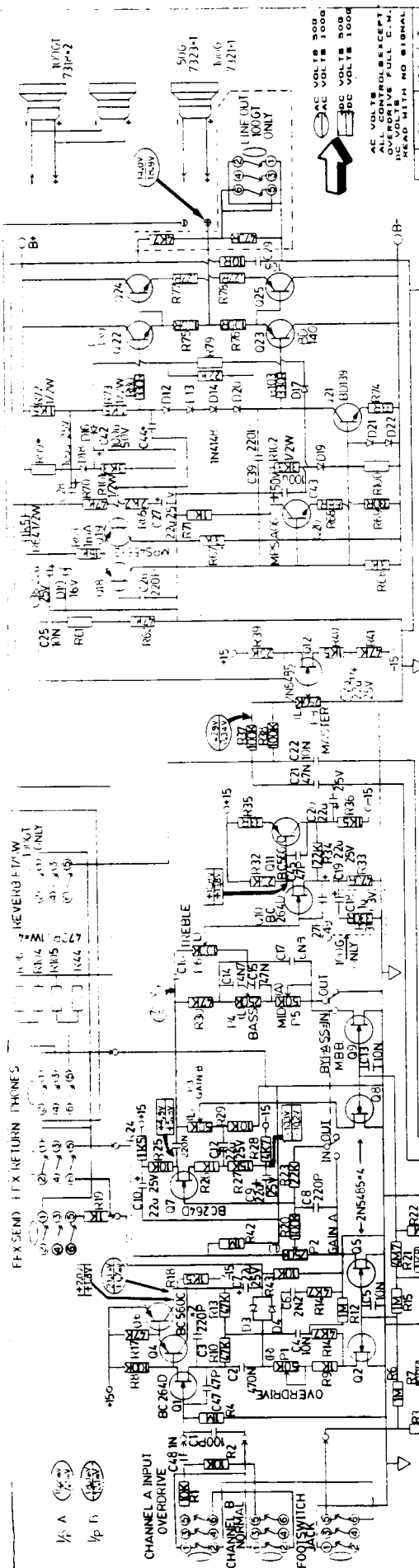
F1	VS1E
F2	VS1E
F3	VS1E
F4	VS1E
F5	VS1E
F6	VS1E
F7	VS1E

LAST RESISTOR = R105  
 LAST CAPACITOR = C18  
 LAST DIODE = D22  
 LAST TRANSISTOR = T25

100M 50M  
 100M ± 22-33V  
 100M ± 30-40V  
 0.01M 1/4W







YSL N°	FOUN°	DATE
4538	P1	
4536	P2, 4, 7	
4540	P3	
4539	P5	
4535	P6	
4530	P8	

RESISTOR	WATTAGE	TYPE	VALUE
PRI	50W	50W	100W
F1	50W	50W	100W
F2	50W	50W	100W
T1	50W	50W	100W

TRANSISTOR	TYPE	VALUE
BC264D	BC264D	BC264D
BC264E	BC264E	BC264E
BC264F	BC264F	BC264F
BC264G	BC264G	BC264G
BC264H	BC264H	BC264H
BC264I	BC264I	BC264I
BC264J	BC264J	BC264J
BC264K	BC264K	BC264K
BC264L	BC264L	BC264L
BC264M	BC264M	BC264M
BC264N	BC264N	BC264N
BC264O	BC264O	BC264O
BC264P	BC264P	BC264P
BC264Q	BC264Q	BC264Q
BC264R	BC264R	BC264R
BC264S	BC264S	BC264S
BC264T	BC264T	BC264T
BC264U	BC264U	BC264U
BC264V	BC264V	BC264V
BC264W	BC264W	BC264W
BC264X	BC264X	BC264X
BC264Y	BC264Y	BC264Y
BC264Z	BC264Z	BC264Z

**YORKVILLE SOUND LTD.**

MODEL BLOC 500700/01

DESIGNER: J. KRAMPERA, J. KATOUJ

DATE: 11/10/76

CHECKED BY: J. MOURTOS

DATE OF SUBMISSION

500V 100V/10T

390P 330R 330R 330R 3K 3K MJ15015 MJ15016 270R 100K 130R 330R 120K 120K

BT 871 872

E.C.H.

FRONT VIEW

2N5405 TOP VIEW

BC264D TOP VIEW

LAST RESISTOR: 1005

LAST CAPACITOR: C49

LAST DIODE: D22

LAST TRANSISTOR: 025

PART#	AMG	COLOR	LENGTH	DIA.	NOTES
3952	22	BLACK	8"		M7
3953	22	WHITE	8"	THISTED-1 SET	M6
3946	22	YELLOW	10"		M5
3954	22	BLACK	5"	THISTED-1 SET	M4
3944	22	ORANGE	5"		M3
3953	22	WHITE	8 1/2"	1	M10
3952	22	BLACK	5"	1	M9
3955	22	BROWN	5"	1	M8
3947	22	RED	9"	THISTED-1 SET	M11 BLOC 1000T
3952	22	BLACK	9"		M12 ONLY
3943	22	GREEN	8"	1	M13

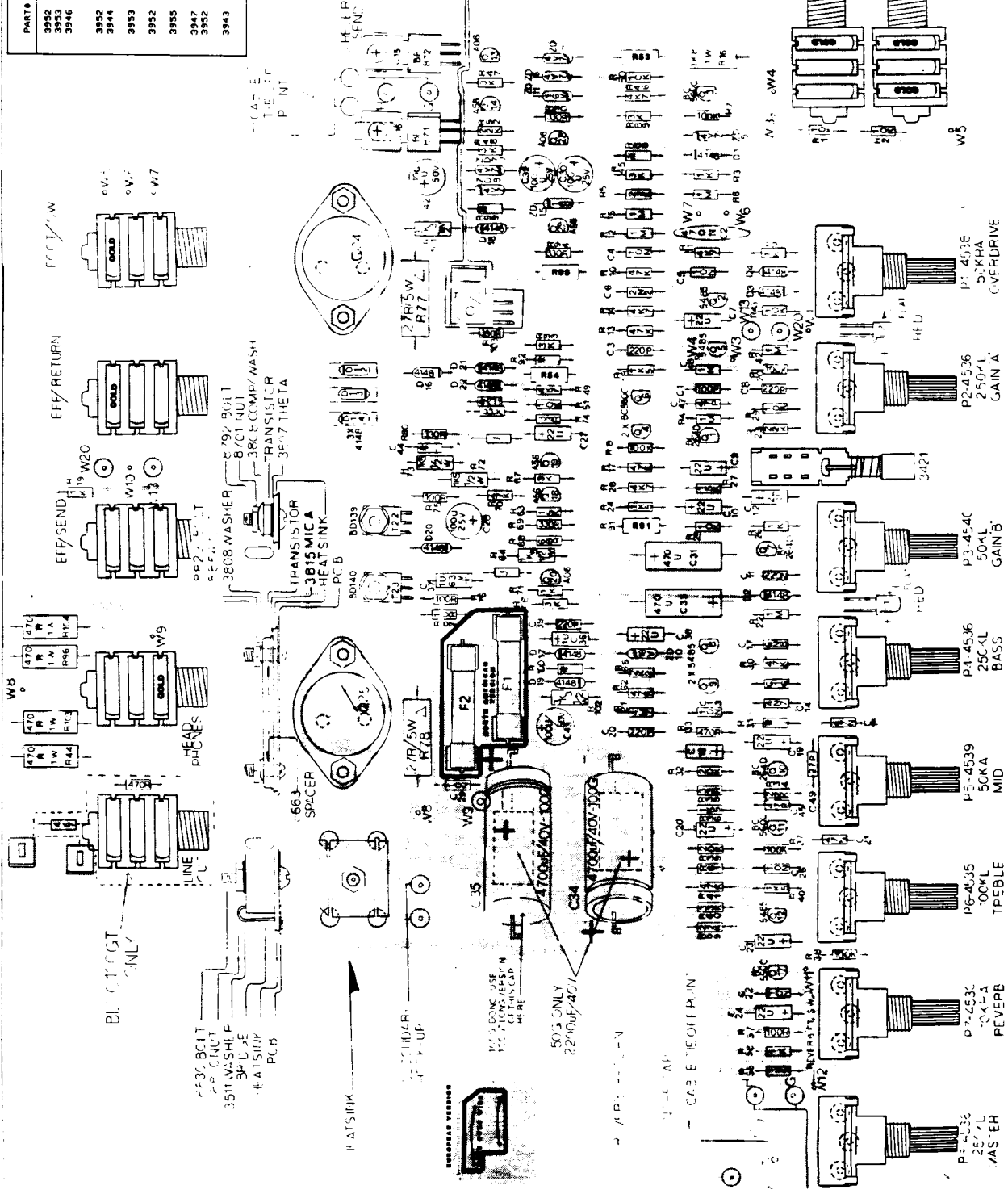
400 HV

NOTE: RESISTOR VALUES ARE  
BASED ON 1% TOLERANCE  
RESISTORS PT-4837

MAIN AMPLIFIER  
3561 CLAMP  
TRANSISTOR

REF. NO.	MB1A	MB1E	MB1C
Q1	2N3055	6L0C100C	BLOC1000T
C44	47P	MJ15015	MJ15015
R92	68R	100P	100P
R61	120K	300R	300R
R31	100K	300R	300R
R88	300R	300R	300R
C16	68R	300P	300P
R99	220P	300P	300P
R100	470R	100R	100R
F1	3A F/B	330P	330R
PRIMARY	3A F/B	4A F/B	4A F/B
	1.6A 5/B	1.6A 5/B	1.6A 5/B

COMPONENT LAYOUT  
REV. 1 JUL 68  
DATE: JUL 68  
CHKD: RZDRN/SCC7



- P1-403C 50KHA COVERDRIVE
- P2-4536 250K/L GAIN A
- P3-454C 50K/L GAIN B
- P4-4536 250K/L BASS
- P5-4539 50KA MID
- P6-4535 700K/L TPEBLE
- P7-453C 50K-A PEVEPB

**MODEL No.**  
50G100G  
BLOCKS.

# REVISIONS

**REV. No.**  
4124104

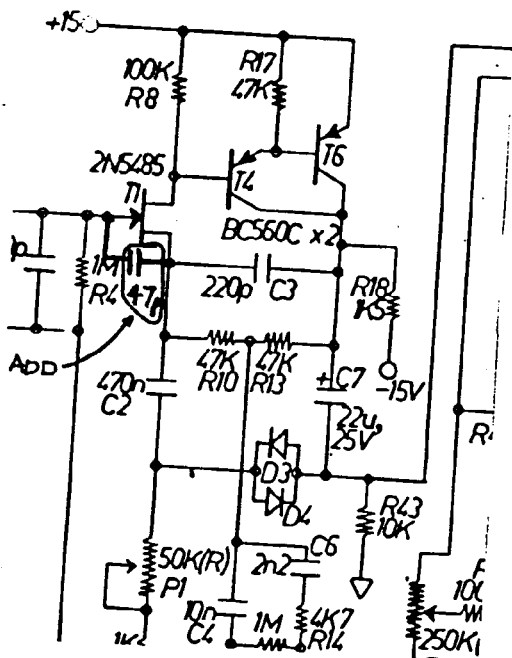
LOT No. 321-322 FROM SER. No. 412xxx DATE 1 DEC 84

## CHANGES

## REASONS

47pF FROM GATE TO SOURCE  
OF INPUT FET (T1 - SEE DIAGRAM)

SUPPRESS RADIO FREQUENCY  
PICKED UP BY AMP.



**P.C. No.**

**SCHEMATIC UPDATE**