

# ENGINEERING DATA

## STROMBERG-CARLSON NO. 509 RADIO RECEIVERS

STROMBERG-CARLSON TELEPHONE MANUFACTURING COMPANY  
ROCHESTER, NEW YORK

### IDENTIFICATION TABLE

Model	Input Power Frequency	Chassis	Cabinet	Speaker	Phonograph Equipment
509-PF	60 Cycles	32301	32304	32305	32286
509-PFB	25 Cycles	32302	32304	32305	32287
509-PT	60 Cycles	32299	32303	30304	32307
509-PTB	25 Cycles	32300	32303	30304	32308

### SPECIFICATIONS

The specifications are the same as the No. 410 Receivers except for the following:

Power Frequency Rating	-----	Std. 60 Cycle, also available 25 Cycle
Input Power Rating, 509-PF	-----	85 Watts
Input Power Rating, 509-PT	-----	95 Watts

### FEATURES

These receivers employ the same circuits as the No. 410 except for improved tone and phonograph compensation circuits which are designed to provide exceptionally good phonograph reproduction.

The No. 509-PT is equipped with a single record phonograph unit using a crystal pick-up. This phono-

graph unit is designed to play the standard 10 or 12 inch records.

The No. 509-PF Receivers are equipped with an automatic record changer using a crystal pick-up. This record player shifts and plays the standard 10 or 12 inch records.

### ACCESSORIES

Same as No. 410 Receivers.

### LOCATION CHART

Same as No. 410 Receivers.

### ALIGNING INFORMATION

Same as No. 410 Receivers.

### ADJUSTING DIAL LAMP

Same as No. 410 Receivers.

### NORMAL VOLTAGE READINGS

Same as No. 410 Receivers.

### CONTINUITY TEST

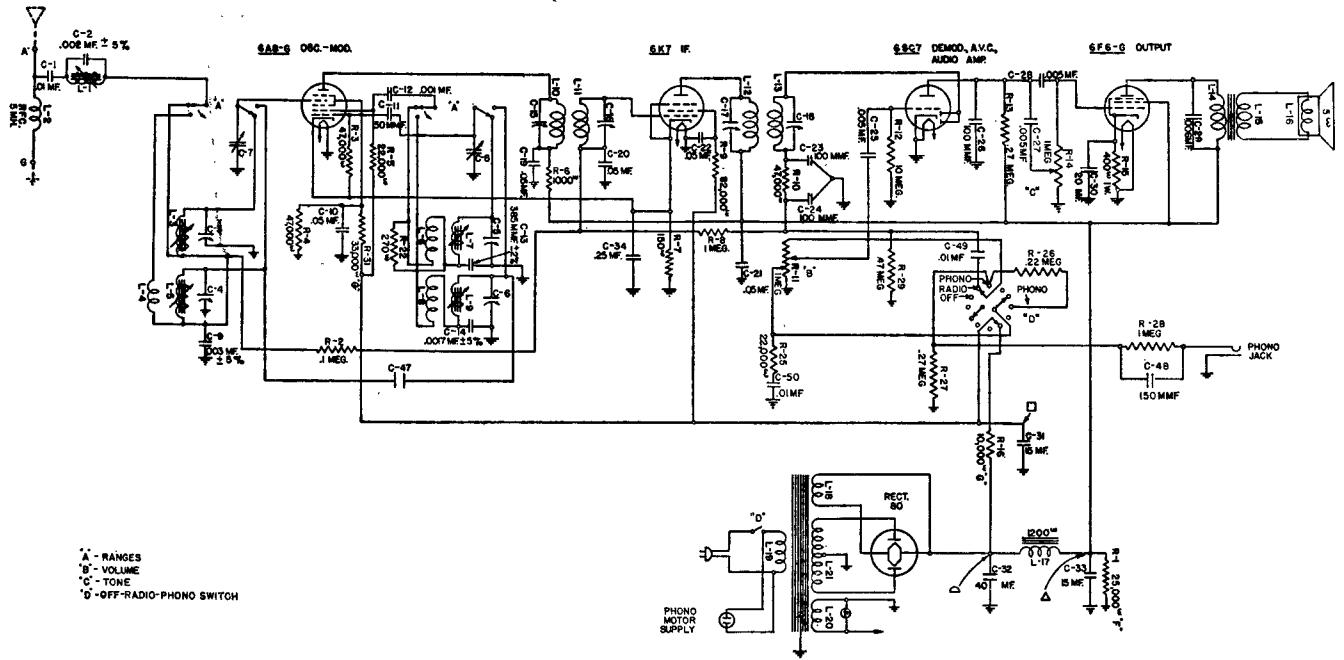
Same as No. 410 Receivers.

### REPLACEMENT PARTS

Replacement parts are the same as used on the No. 410 Receivers except for the following:

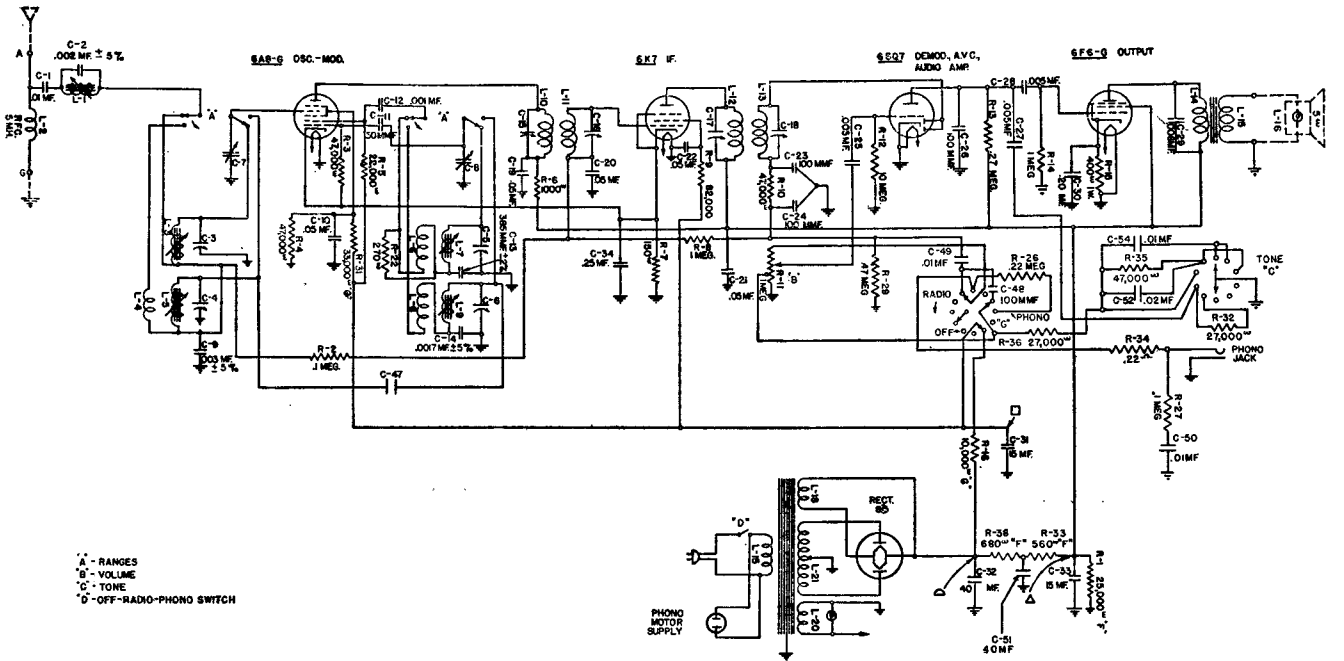
Piece No.	Circuit Designation	Part	Piece No.	Circuit Designation	Part
25054	C-48	150 mmf. Capacitor, 509-PT	27313		Tone Control Switch, 509-PF
25150	C-52	.02 mf. Capacitor, 509-PF	28568	C-48	100 mmf. Capacitor, 509-PF
26349	R-25	22,000 Ohm Resistor, 509-PT	29084		Knob for OFF-ON, Radio Phono. Switch
26350	R-32, 36	27,000 Ohm Resistor, 509-PF	29560	R-11	Volume Control
26353	R-35	47,000 Ohm Resistor, 509-PF	30477	C-51	40 mf. 400 Volts, 509-PF
26357	R-27	.1 Megohm Resistor, 509-PF	30566		Tone Control, 509-PT
26361	R-26 (R-37, 509-PF)	.22 Megohm Resistor	31481	C-49, 50 (C-54, 509-PF)	.01 mf. Capacitor
26362	R-27	.27 Megohm Resistor, 509-PT	32305		Speaker, 509-PF
26365	R-29	.47 Megohm Resistor	32314		Switch OFF-ON Radio Phono.
26369	R-28	1 Megohm Resistor, 509-PT	32319	R-33	560 Ohm Resistor, 509-PF
			32320	R-38	680 Ohm Resistor, 509-PF

**NOTE:** See schematic diagrams on back for circuit changes.



A - RANGES  
 B - VOLUME  
 C - TONE  
 D - OFF-RADIO-PHONO SWITCH

Schematic Diagram—No. 509-PT



A - RANGES  
 B - VOLUME  
 C - TONE  
 D - OFF-RADIO-PHONO SWITCH

Schematic Diagram—No. 509-PF