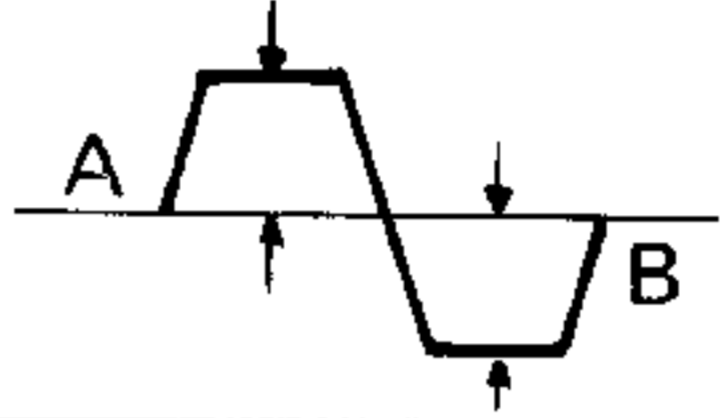





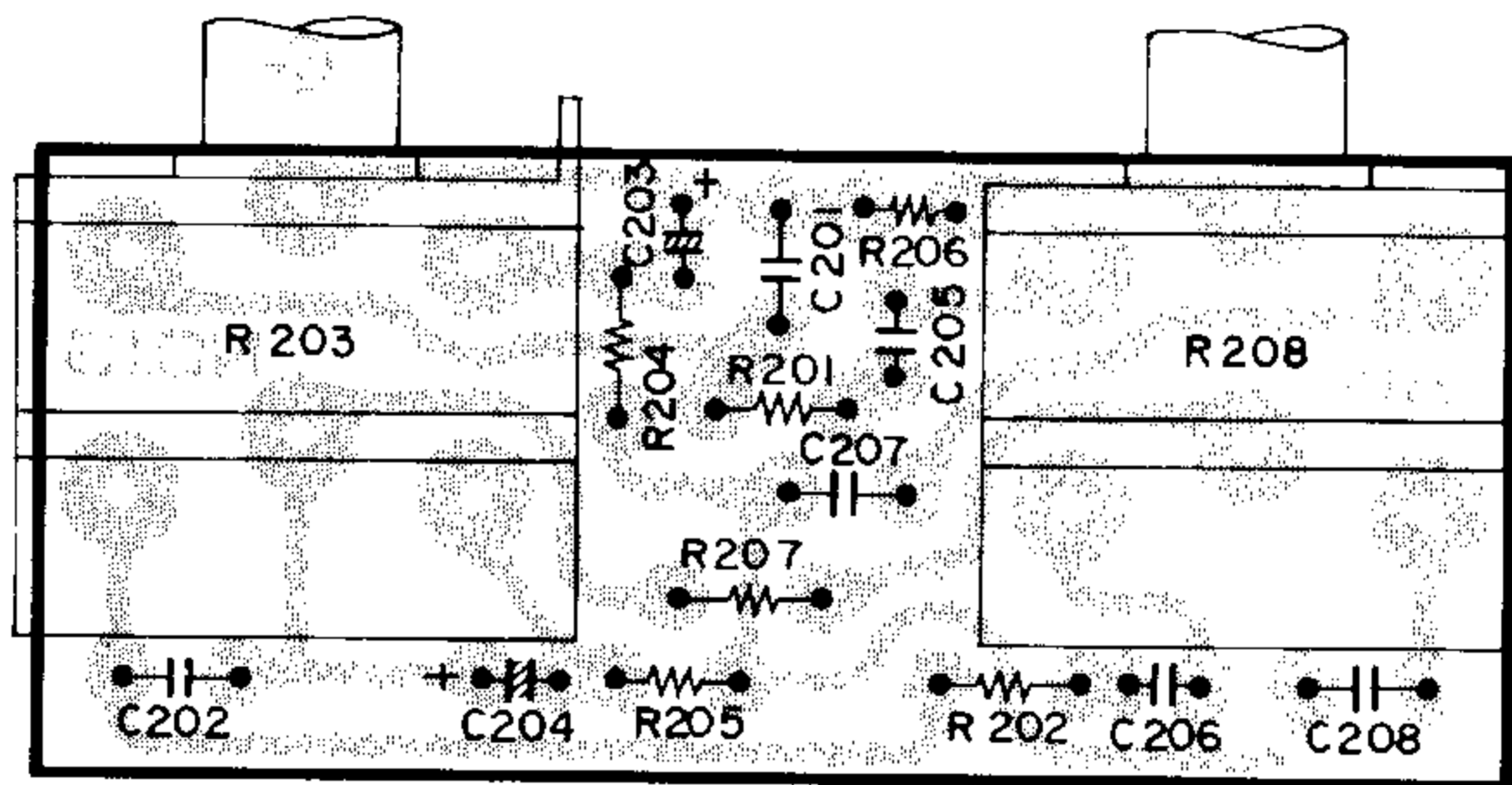
### ALIGNMENT PROCEDURE

1. Set the volume control at maximum, bass, treble and balance controls at mechanical center position, speakers switch in the position "MAIN" while switching the tape monitor and loudness control switches off.
2. Connect 8 ohms dummy load resistors (10–20W, non-inductive preferably) to each R and L channel "MAIN" output terminals of the unit.

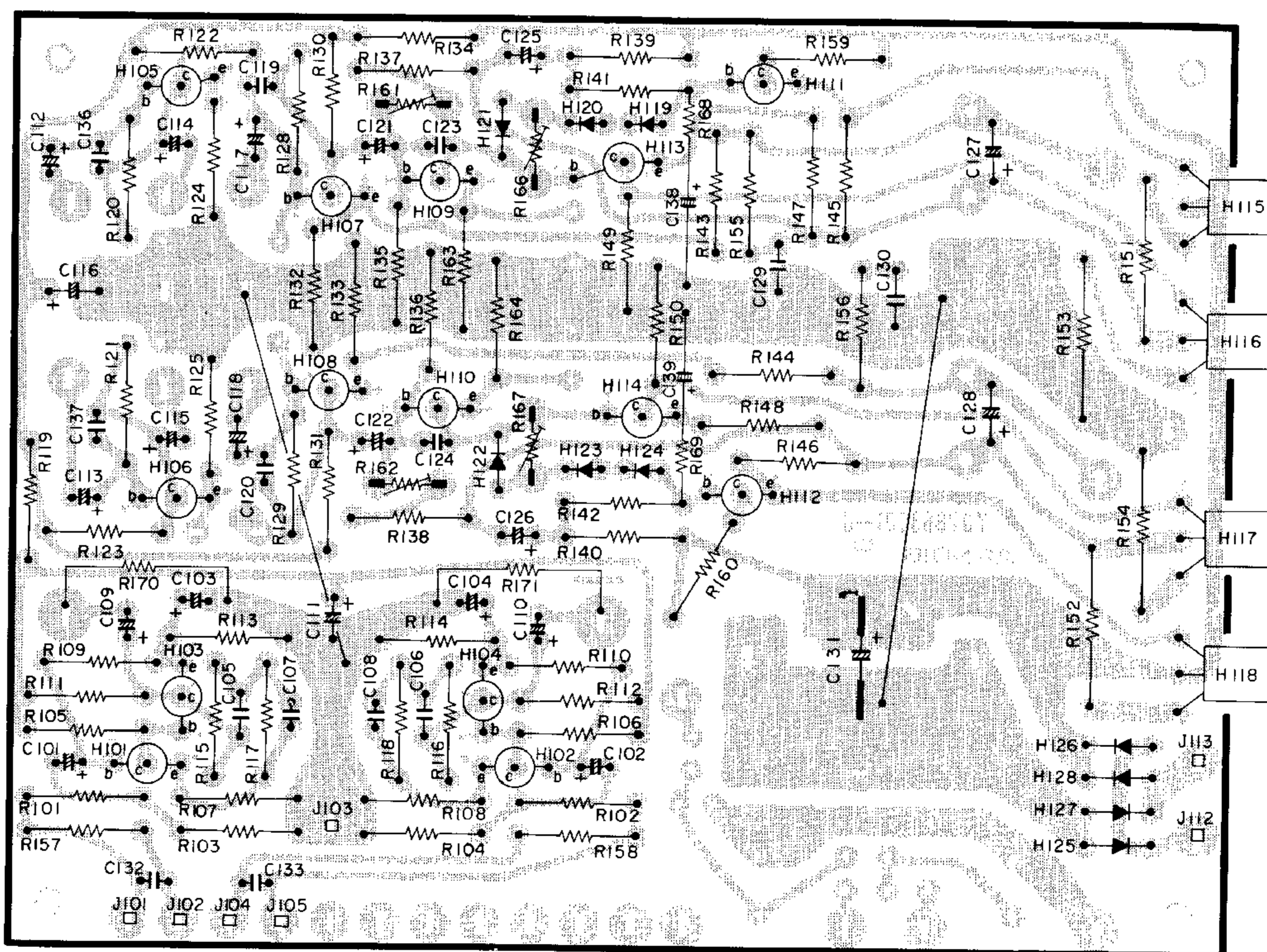
(Selector Switch in the position "AUX")

Step	Signal Source Connection	Signal Frequency	Indicator Connection	Adjustment
1	Audio Generator to AUX terminal	1,000 Hz	Oscilloscope to output terminals	Gradually increase output level of the audio generator and adjust R161 and R162 for symmetrical clipping level.  <p style="text-align: right;">A = B</p>
2				Adjust R166 and R167 for not having any evidence of crossover distortion at 500mW output. Caution: Avoid excessive bias current (10mA at no signal). 

### CIRCUIT BOARD DIAGRAM (TOP VIEW)

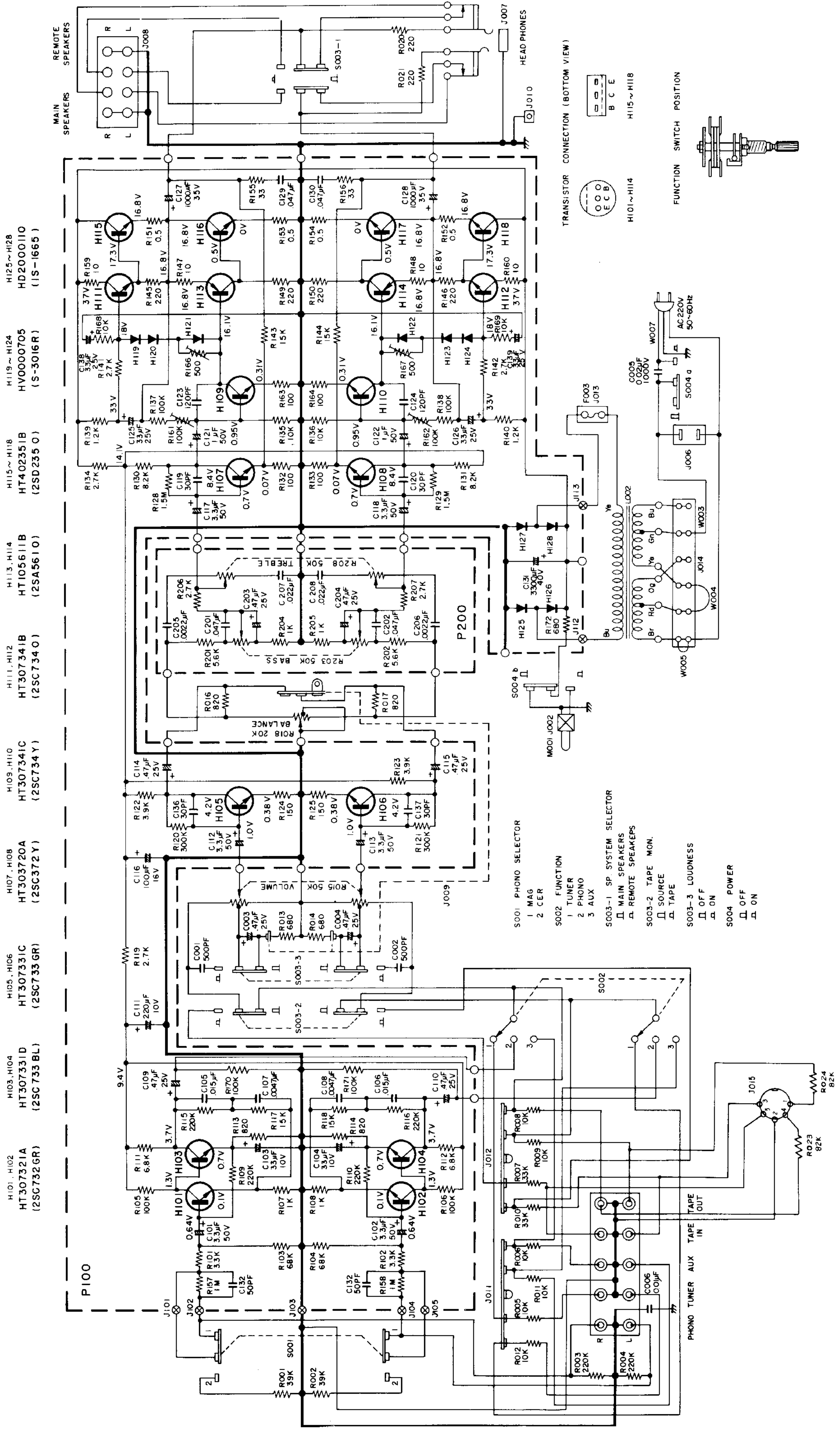


**Tone Control Block**



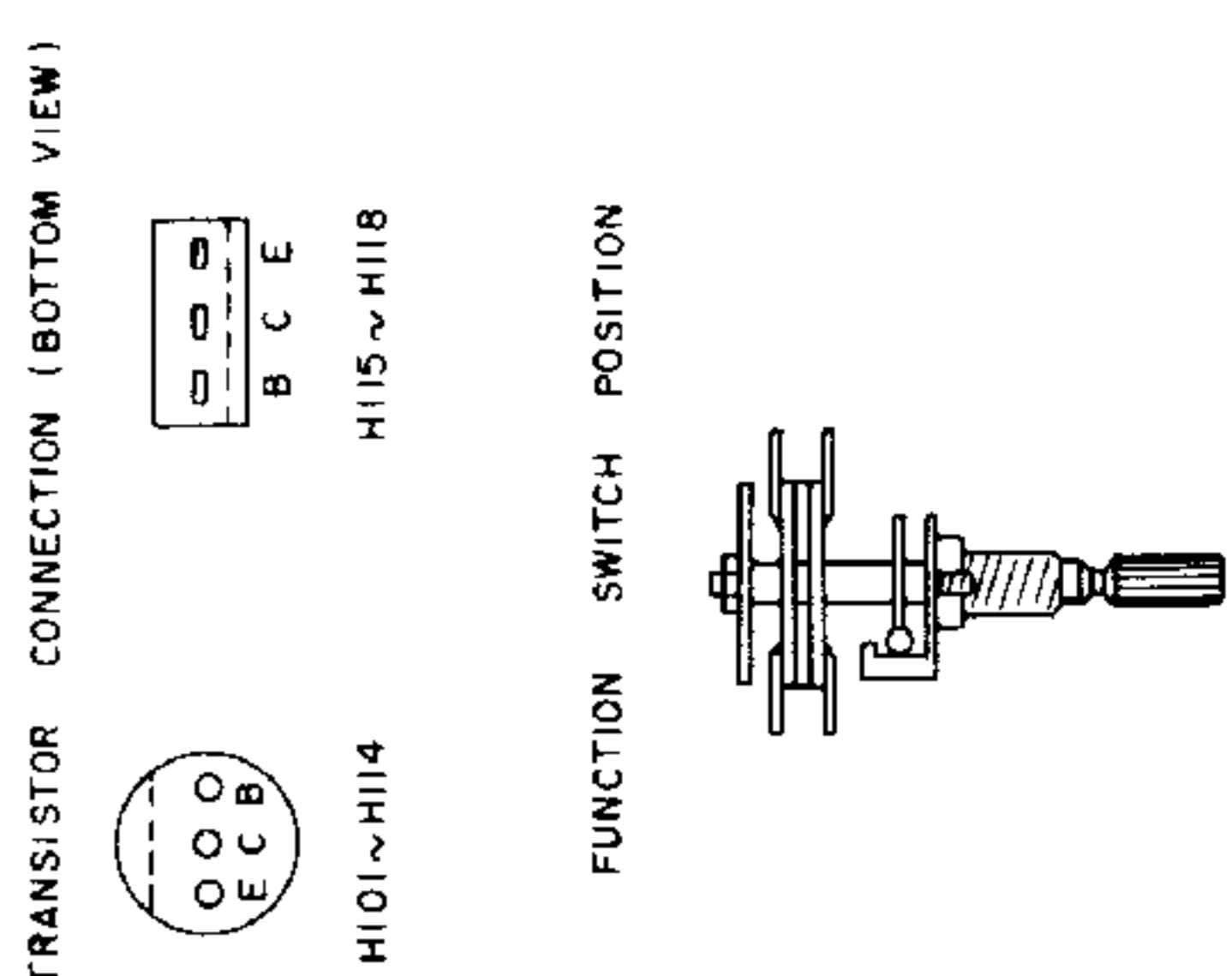
**Audio Amp. Block**

**SCHEMATIC DIAGRAM**

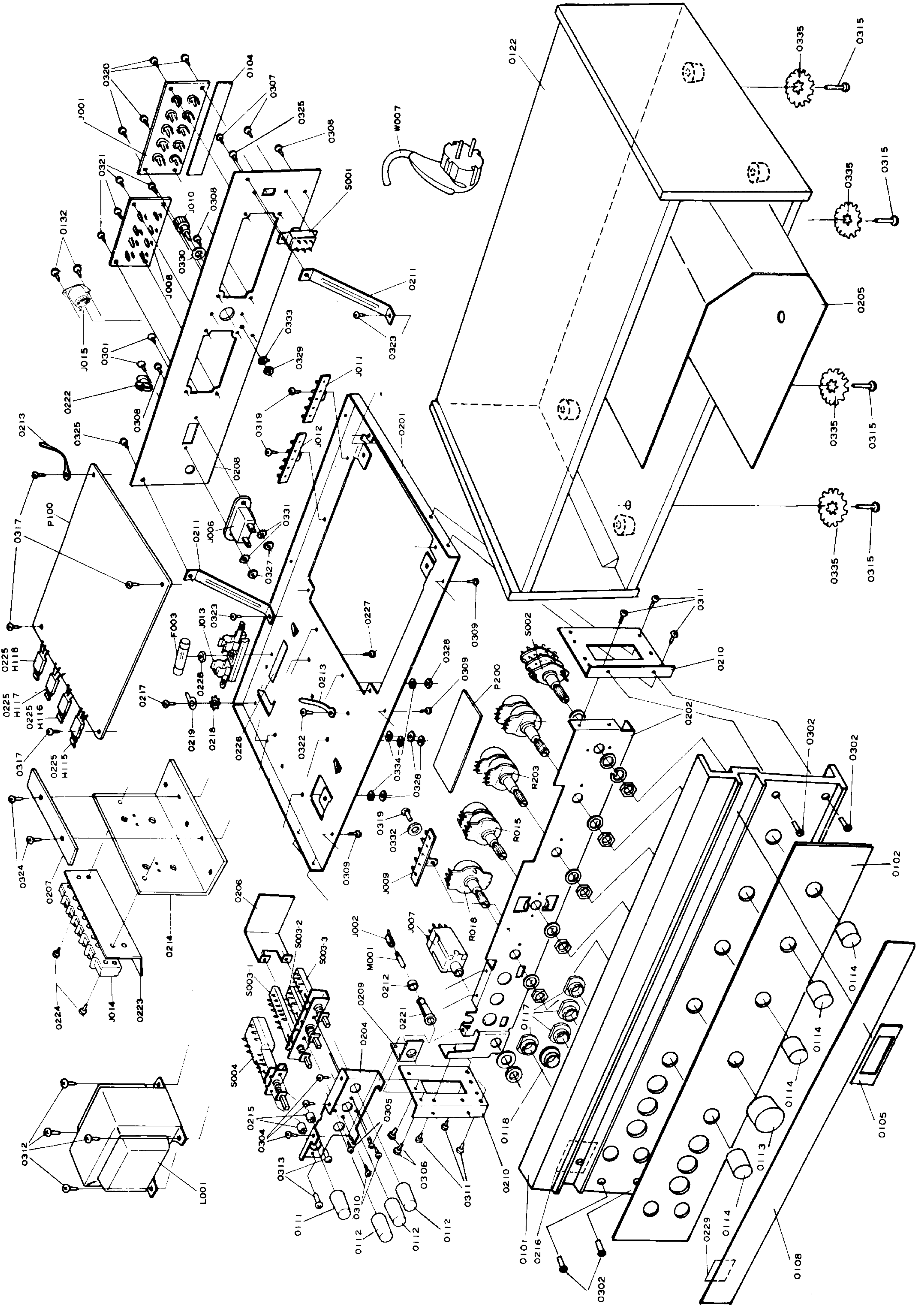


- H101, H102 HT307321A (2SC732GR)
- H103, H104 HT307331D (2SC733BL)
- H105, H106 HT307331C (2SC733GR)
- H107, H108 HT307320A (2SC372Y)
- H109, H110 HT307341C (2SC734Y)
- H111, H112 HT307341B (2SC734O)
- H113, H114 HT105611B (2SA561O)
- H115~H118 HT402351B (2SD235O)
- H119~H124 HV0000705 (S-3016R)
- H125~H128 HD2000110 (1S-1655)

- S001 PHONO SELECTOR
  - 1 MAG
  - 2 CER
- S002 FUNCTION
  - 1 TUNER
  - 2 PHONO
  - 3 AUX
- S003-1 SP SYSTEM SELECTOR
  - MAIN SPEAKERS
  - REMOTE SPEAKERS
- S003-2 TAPE MON.
  - SOURCE
  - TAPE
- S003-3 LOUDNESS
  - OFF
  - ON
- S004 POWER
  - OFF
  - ON



**EXPLODED DIAGRAM OF THE MECHANISM**



## PARTS LIST

REF. DESIG.	PART NO.	DESCRIPTION	REF. DESIG.	PART NO.	DESCRIPTION
		<b>MECHANICAL PARTS</b>			
A	287706340	Escutcheon Ass'y	0315	51100410A	B.H.M. Screw x 4
0101	287706301	Escutcheon	0316	51570310B	P. Tapt Screw
0102	287706302	Escutcheon	0317	51570306B	P. Tapt Screw x 4
0105	287625150	Badge K	0318	51570306B	P. Tapt Screw
0108	287715801	Window	0319	51570306B	P. Tapt Screw x 3
0117	286025901	Bush x 4	0320	51570306B	P. Tapt Screw x 3
0118	273125901	Bush	0321	51570306B	P. Tapt Screw x 4
0210	287616002	Bracket x 2	0322	51570306B	P. Tapt Screw
0302	51040306A	F.H.M. Screw x 4	0323	51570306B	P. Tapt Screw x 2
			0324	51570315B	P. Tapt Screw x 2
0104	287726502	Indicator	0325	51380305P	P.H. Tapt Screw x 2
0111	287615407	Knob (Power Switch)	0326	53110303E	Hexagon Nut
0112	287615409	Knob x 3	0327	53112603E	Hexagon Nut x 2
0113	287615402	Knob (Volume)	0328	53110303E	Hexagon Nut x 4
0114	287615406	Knob x 4	0329	53110303E	Hexagon Nut
0122	287606450	Case K	0330	54020301E	Flat Washer P
0132	51570308B	P. Tapt Screw x 2	0331	54052600R	T.L. Washer OR x 2
0201	279210501	Chassis	0332	54050300R	T.L. Washer OR
0202	280416001	Bracket (Front)	0333	54050300R	T.L. Washer OR
0204	280416003	Bracket	0334	54040302A	Spring Washer x 4
0205	287610901	Shield			
0206	280410901	Shield	0335	54080400R	T.L. Washer RR x 4
0207	279200501	Clamper			<b>ELECTRICAL PARTS</b>
			P100	YD2863001 ZZ 2877801	P.W. Board P.W. Board Ass'y
B	287716040	Bracket Ass'y			<b>RESISTORS (All resistors are <math>\pm 10\%</math>, <math>\frac{1}{4}W</math> and carbon type, unless otherwise indicated.)</b>
0209	287716001	Bracket	R101	RT1033214	3.3K $\Omega$
0221	276325901	Bush	R102	RT1033214	3.3K $\Omega$
0212	71400219Q	Bush	R103	RT1068314	68K $\Omega$
			R104	RT1068314	68K $\Omega$
0211	254910401	Retainer x 2	R105	RT1010414	100K $\Omega$
0213	138200503	Clamper x 2	R106	RT1010414	100K $\Omega$
0214	267326701	Heat Sink	R107	RT1010214	1K $\Omega$
0215	273105502	Collar x 4	R108	RT1010214	1K $\Omega$
0216	287605301	Cover	R109	RT1022414	220K $\Omega$
0217	51570306B	P. Tapt Screw	R110	RT1022414	220K $\Omega$
0218	54050300R	T.L. Washer OR	R111	RT1068214	6.8K $\Omega$
0219	62031650W	Lug	R112	RT1068214	6.8K $\Omega$
0222	145525905	Bush	R113	RT1012214	1.2K $\Omega$
0223	286412001	Insulator	R114	RT1012214	1.2K $\Omega$
0224	51380316P	P.H. Tapt Screw x 2	R115	RT1022414	220K $\Omega$
0225	268611801	Spacer x 4	R116	RT1022414	220K $\Omega$
0226	274726503	Indicator	R117	RT1015314	15K $\Omega$
0227	51062608E	P.H.M. Screw	R118	RT1015314	15K $\Omega$
0228	53112603E	Hexagon Nut	R119	RT1027214	2.7K $\Omega$
0229	287605302	Cover	R120	RT1030414	300K $\Omega$
0232	257886101	CAUTION Label	R121	RT1030414	300K $\Omega$
0301	51042608A	F.H.M. Screw x 2	R122	RT1039214	3.9K $\Omega$
0303	62031650W	Lug	R123	RT1039214	3.9K $\Omega$
0304	51062605A	P.H.M. Screw x 3	R124	RT1015114	150 $\Omega$
0305	51062605A	P.H.M. Screw x 2	R125	RT1015114	150 $\Omega$
0306	51060305A	P.H.M. Screw x 2	R128	RT1015514	1.5M $\Omega$
0307	51060305A	P.H.M. Screw x 2	R129	RT1015514	1.5M $\Omega$
0308	51060305A	P.H.M. Screw x 3	R130	RT1082214	8.2K $\Omega$
0309	51060305A	P.H.M. Screw x 3	R131	RT1082214	8.2K $\Omega$
0310	51060305A	P.H.M. Screw x 2	R132	RT1010114	100 $\Omega$
0311	51060305A	P.H.M. Screw x 6	R133	RT1010114	100 $\Omega$
0312	51060308A	P.H.M. Screw x 4	R134	RT1027214	2.7K $\Omega$
0313	51060310A	P.H.M. Screw x 2	R135	RT1010314	10K $\Omega$
0314	54050300R	T.L. Washer OR	R136	RT1010314	10K $\Omega$