

REVISIONS			
REV.	DESCRIPTION	DATE	APPROVED
A	PR569	16-JUN-03	JCS
B	EC 3007	04-NOV-03	JCS

**OUTPUT POWER:**  
 UNIT AT RATED LINE VOLTAGE.  
 8 OHM RESISTIVE LOADS CONNECTED AT P17/P18 AND P23/P24.  
 CONNECT 1KHZ SINEWAVE TO TIP AND RING OF EFFECTS RETURN JACK (J5).  
 ADJUST SIGNAL LEVEL TO VERIFY THE FOLLOWING AT P17/P18 AND P23/P24.  
 MINIMUM 40.0M <= 0.5% THD

- TESTPOINT VALUES FOR TP35-38 MAY VARY GREATLY WITH SPECIFIC EXCITATION FREQUENCY AND ARE DEPENDENT UPON DSP SOFTWARE REVISION.  
 ADDITIONAL CONDITIONS FOR TP21-TP25  
 25mv 6.3kHz SINEWAVE INPUT TO J1  
 SET R46 TO 10 (FULL CLOCKWISE).  
 FOLLOWING CONDITIONS ALL TEST POINTS:  
 UNIT AT RATED LINE VOLTAGE  
 PWR, PFD, AND PIG CONNECTED TO PWR, PFD, AND PIG  
 RESPECTIVELY, AND P14 CONNECTED TO DSP PCA 0062193000  
 8 OHM RESISTIVE LOADS CONNECTED AT P17/P18 AND P23/P24  
 ALL CONTROLS SET TO 5-1/2 (50% ROTATION) EXCEPT R29 AND R46  
 SET TO 1 (FULL COUNTER-CLOCKWISE).  
 SET ENCODERS S5 AND S6 TO FIRST DELAY (MOST COUNTER-CLOCKWISE DELAY SELECTION).  
 CONNECT FOOTSWITCH ASSEMBLY 0062206000 TO FOOTSWITCH JACK (J7).  
 NO INPUT SIGNAL  
 CONDITIONS FOR TP1-TP4  
 NO INPUT SIGNAL  
 CONDITIONS FOR TP12-TP25, TP31-TP34  
 20mv 1kHz SINEWAVE INPUT TO J1  
 CONDITIONS FOR TP26-TP32, TP35-TP36  
 25mv 1kHz SINEWAVE INPUT TO J1  
 CONDITIONS FOR TP37-TP40, TP43-TP44  
 25mv 1kHz SINEWAVE INPUT TO J1  
 SET R98 AND R129 TO 1 (FULL COUNTER-CLOCKWISE)  
 6. LAST REFERENCE DESIGNATORS: S6, J7, U22, C50, D39, P24, PWR, 041, R81  
 7. THIS SCHEMATIC IS FOR PCB FABRICATION P/N 0062197000 AND PCB ASSEMBLY P/N 0062198000.  
 8. ALL DIODES ARE 1N4148.  
 9. ALL POLARIZED CAPACITORS IN uF, 20% 50V MINIMUM. (POWER SUPPLY BYPASS CAPACITORS ARE 20%).  
 1. ALL RESISTORS IN OHMS, 5% 1/4W.

THIS DOCUMENT CONTAINS INFORMATION OF A PROPRIETARY NATURE TO FENDER MUSICAL INSTRUMENTS AND IS SUBMITTED TO YOU IN CONFIDENCE AND SHALL NOT BE DISCLOSED OR TRANSMITTED TO OTHERS WITHOUT AUTHORIZATION FROM FENDER MUSICAL INSTRUMENTS.

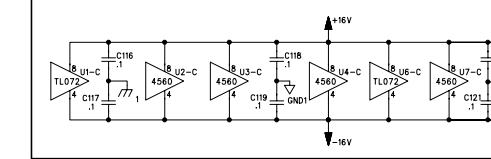
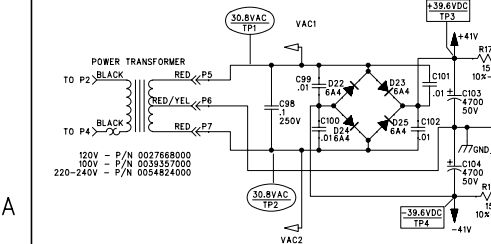
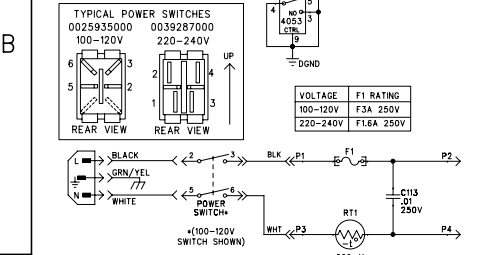
**Fender** MUSICAL INSTRUMENTS  
 Corona, CA USA

CHECKED BY: \_\_\_\_\_  
 DATE: \_\_\_\_\_

APPROVED BY: \_\_\_\_\_  
 DATE: \_\_\_\_\_

DRAWING NUMBER: **D 0062209000** REV. **B**

RELEASE DATE: 16-JUN-03 SHEET: 1 OF 2



8

7

6

5

4

3

2

1

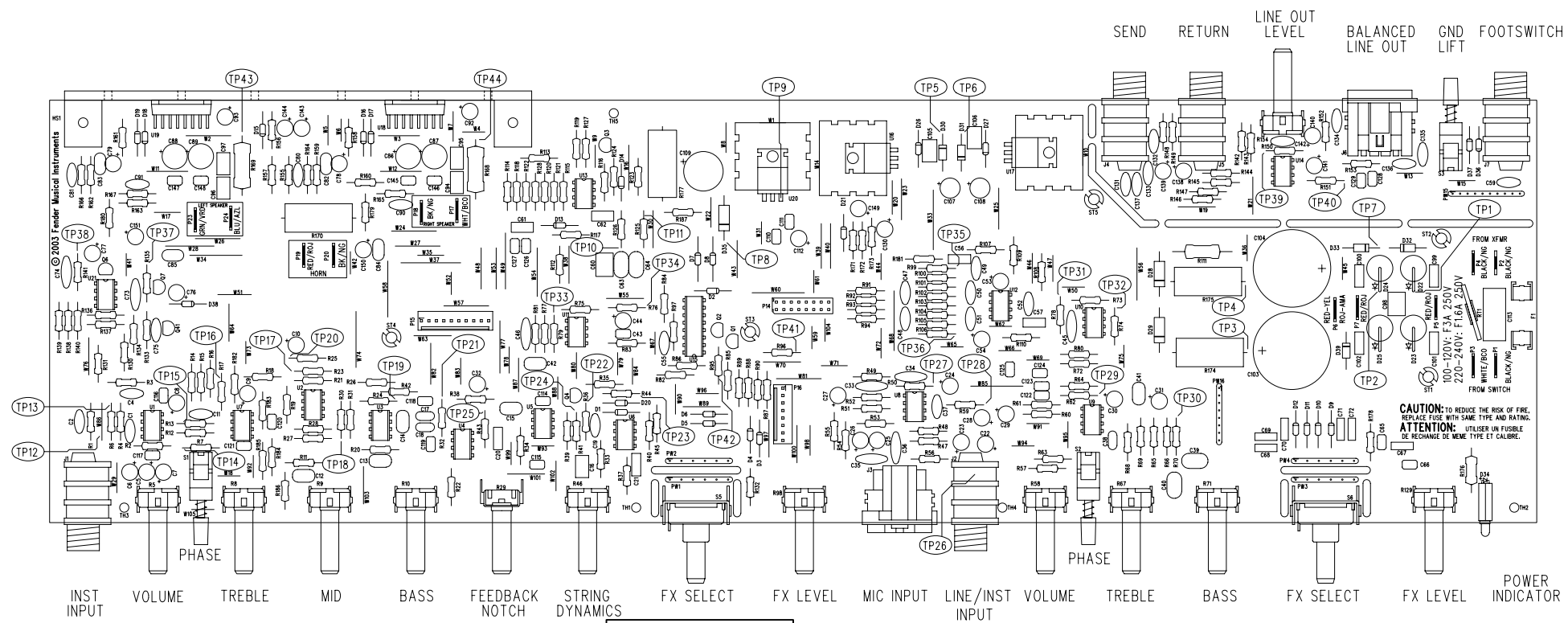
REVISIONS			
REV.	DESCRIPTION	DATE	APPROVED
A	PR569	16-JUN-03	J.C.S
B	EC 3007	04-NOV-03	J.C.S

D

C

B

A



FILM/DWG: SERVICE DIAGRAM  
 DATABASE: Z569P.PCB DATE: 04-NOV-03

1. SEE SHEET 1 FOR PRIMARY WIRING, TEST CONDITIONS AND TP VALUES.

NOTES: (UNLESS OTHERWISE NOTED)

8

7

6

5

4

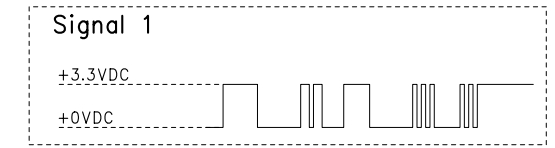
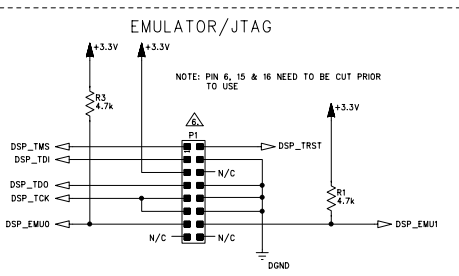
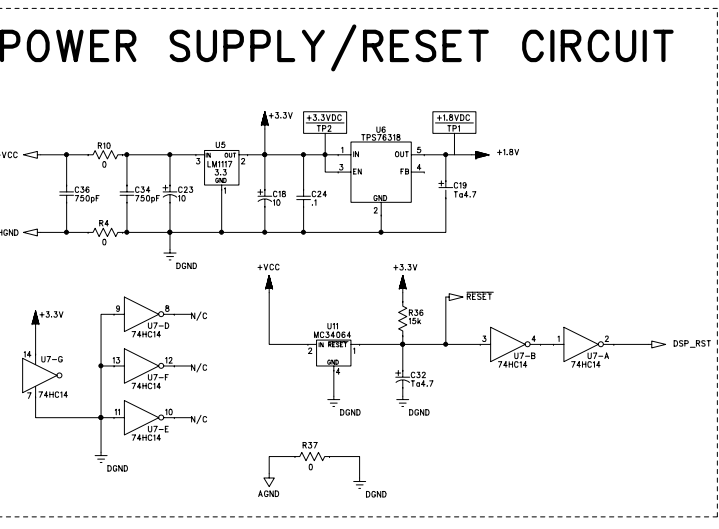
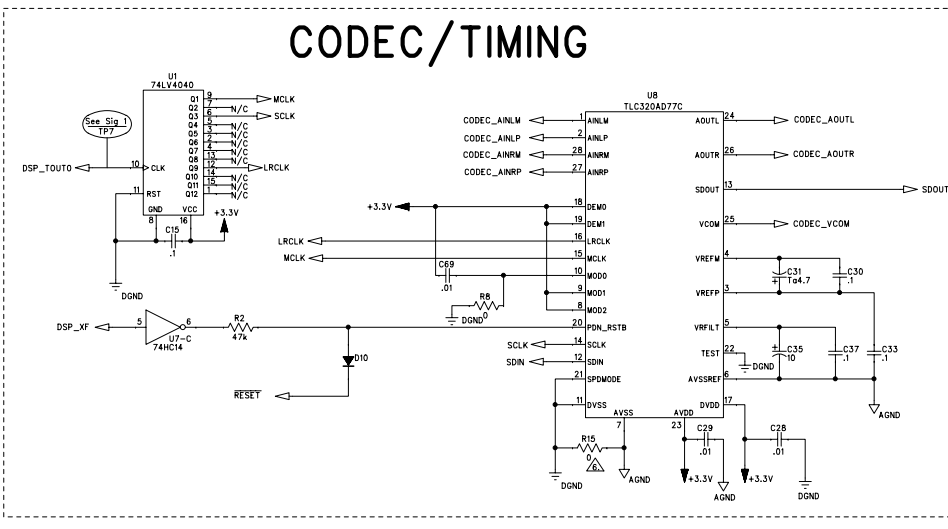
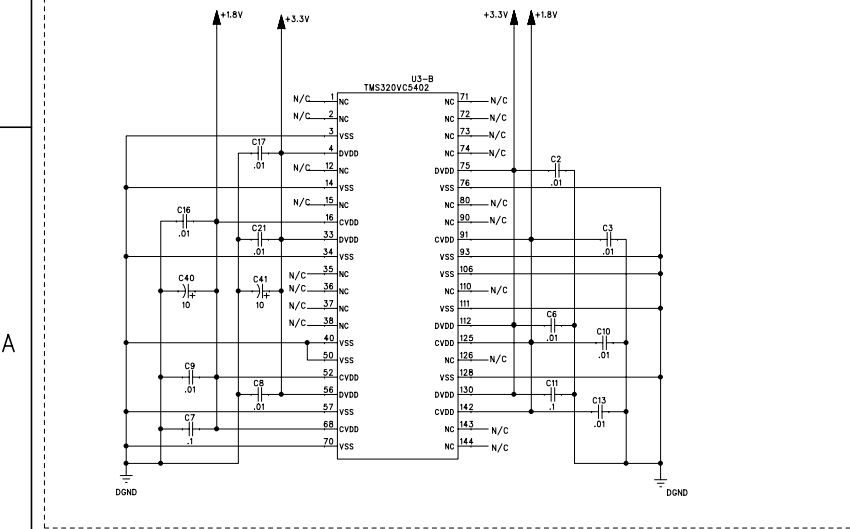
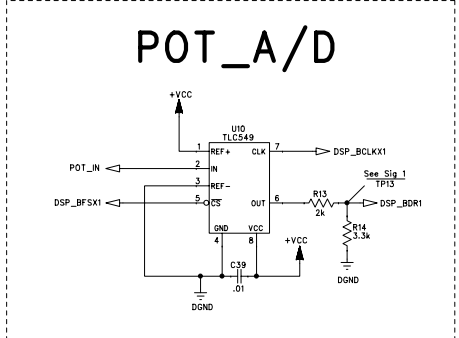
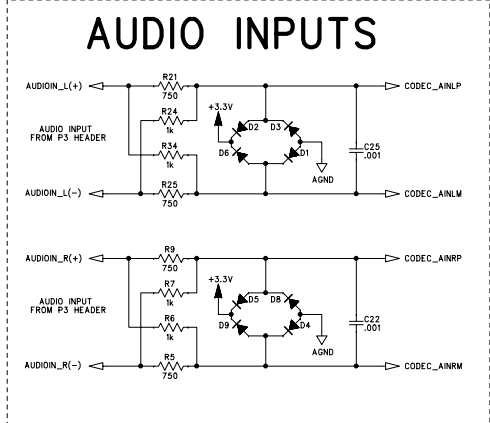
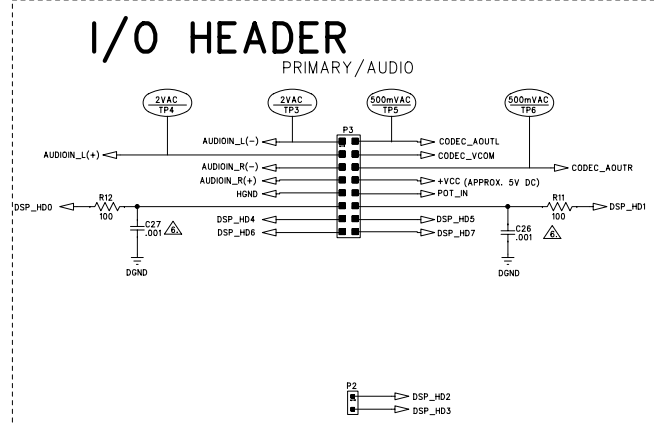
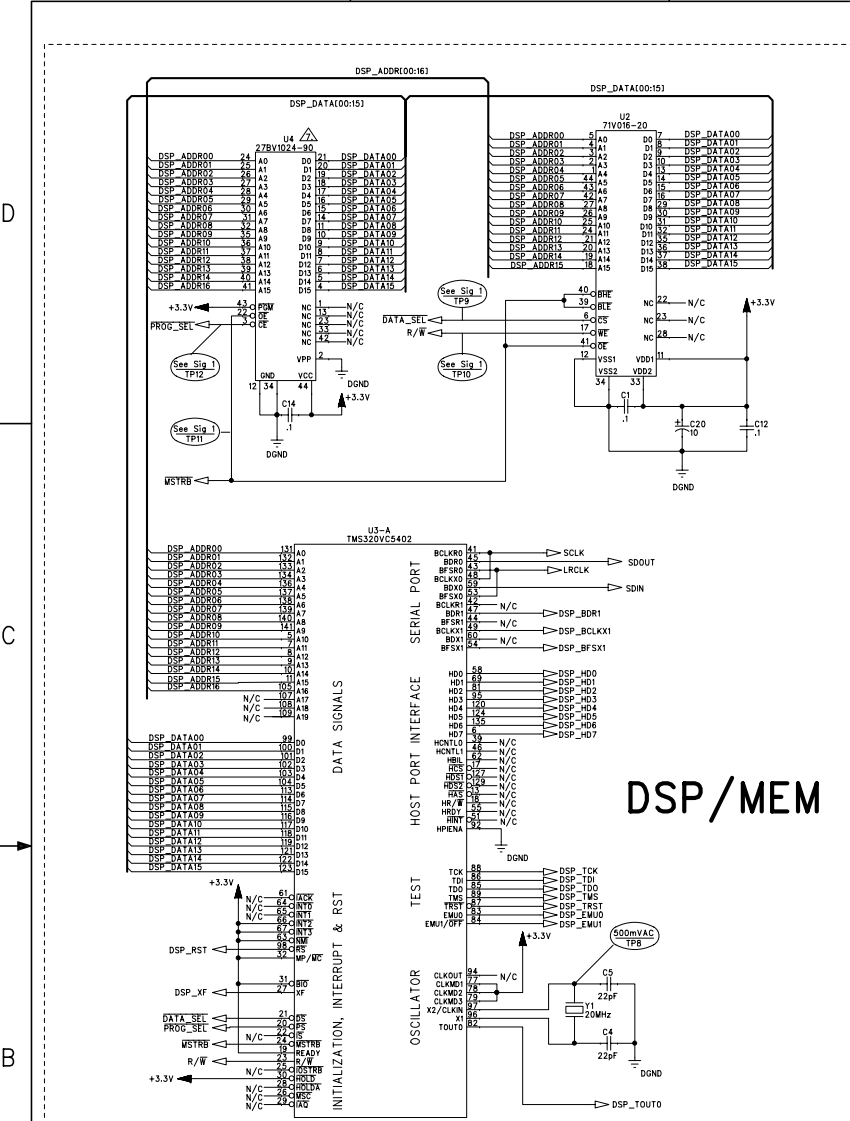
3

2

1

THIS DOCUMENT CONTAINS INFORMATION OF A PROPRIETARY NATURE TO FENDER MUSICAL INSTRUMENTS AND IS SUBMITTED TO YOU IN CONFIDENCE AND SHALL NOT BE DISCLOSED OR TRANSMITTED TO OTHERS WITHOUT AUTHORIZATION FROM FENDER MUSICAL INSTRUMENTS.		MUSICAL INSTRUMENTS Corona, CA U.S.A.	
CHECKED BY: _____	DATE: _____	TITLE: SERVICE DIAGRAM, COMBINED (PCB Assy) ACOUSTASONIC JR DSP	
APPROVED BY: _____	DATE: _____	SIZE: <b>D</b> DRAWING NUMBER: 0062209000	REV: <b>B</b>
DRAWN: MURRAY	ENGR: STILLWELL	RELEASE DATE: 16-JUN-03	SHEET 2 OF 2
DATABASE FILE: Z569P.PCB			

REVISIONS			
REV.	DESCRIPTION	DATE	APPROVED
A	PR480	29-NOV-01	J T L
B	EC 2743	07-MAR-02	J T L
C	EC 2789	10-JUN-02	J C S
D	PR542	25-APR-03	R J D



- NOTES: (UNLESS OTHERWISE NOTED)
- INSTALL IC IN SOCKET. FENDER P/N 0056585005
  - DO NOT STUFF C26-27, P1, R15.
  - THIS SCHEMATIC IS FOR PCB FABRICATION P/N 0057284000 AND PCB ASSEMBLY P/N 0057285000.
  - ALL DIODES ARE 1N4448.
  - ALL POLARIZED CAPACITORS IN µF, 20% 15V MINIMUM.
  - ALL UNPOLARIZED CAPACITORS IN nF, 10% OR BETTER; 16V MINIMUM. (POWER SUPPLY BYPASS CAPACITORS ARE 20%).
  - ALL RESISTORS IN OHMS, 5% 1/10W.

THIS DOCUMENT CONTAINS INFORMATION OF A PROPRIETARY NATURE TO FENDER MUSICAL INSTRUMENTS AND IS SUBMITTED TO YOU IN CONFERENCE AND SHALL NOT BE DISCLOSED OR TRANSMITTED TO OTHERS WITHOUT AUTHORIZATION FROM FENDER MUSICAL INSTRUMENTS.

**Fender MUSICAL INSTRUMENTS**  
Corona, CA U.S.A.

CHECKED BY: \_\_\_\_\_

DATE: \_\_\_\_\_

APPROVED BY: \_\_\_\_\_

DATE: \_\_\_\_\_

DRAWN: J. Jimenez ENGR: J. Lamb

DATABASE FILE: 24815.SCH

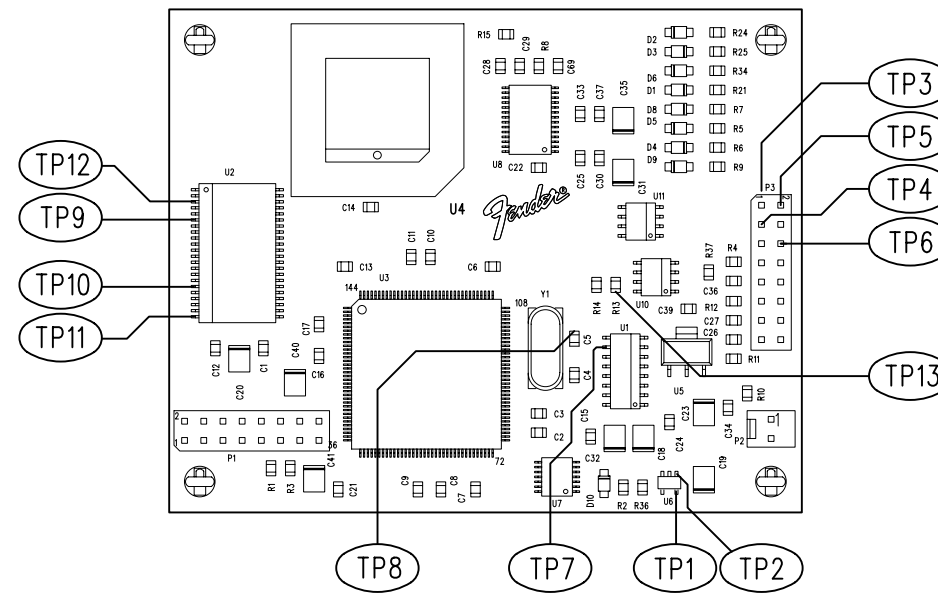
TITLE: SERVICE DIAGRAM, COMBINED (schematic) MICRO DSP

SIZE **D** DRAWING NUMBER **0057283000** REV. **D**

RELEASE DATE: 29-NOV-01 SHEET: 1 OF 2

REVISIONS


REV.	DESCRIPTION	DATE	APPROVED
A	PR480	30-NOV-01	J T L
B	EC 2743	07-MAR-02	J T L
C	EC 2789	10-JUN-02	J C S
D	PR542	25-APR-03	R J D



FILM/DWG: SERVICE DIAGRAM  
 DATABASE: Z481P.PCB DATE: 25-APR-03

1. SEE SHEET 1 FOR TEST CONDITIONS AND TEST POINT VALUES.

NOTES: (UNLESS OTHERWISE NOTED)

THIS DOCUMENT CONTAINS INFORMATION OF A PROPRIETARY NATURE TO FENDER MUSICAL INSTRUMENTS AND IS SUBMITTED TO YOU IN CONFIDENCE AND SHALL NOT BE DISCLOSED OR TRANSMITTED TO OTHERS WITHOUT AUTHORIZATION FROM FENDER MUSICAL INSTRUMENTS.		 MUSICAL INSTRUMENTS Corona, CA U.S.A.	
CHECKED BY: _____ DATE: _____		TITLE: SERVICE DIAGRAM, COMBINED (PCB assy) uDSP SERIES	
APPROVED BY: _____ DATE: _____		SIZE <b>B</b>	DRAWING NUMBER 0057283000
DRAWN: J. Jimenez	ENGR: J. Lamb	REV. D	
DATABASE FILE: Z481P.PCB		RELEASE DATE: 30-NOV-01	SHEET 2 OF 2