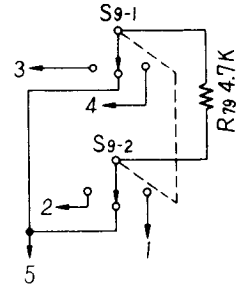
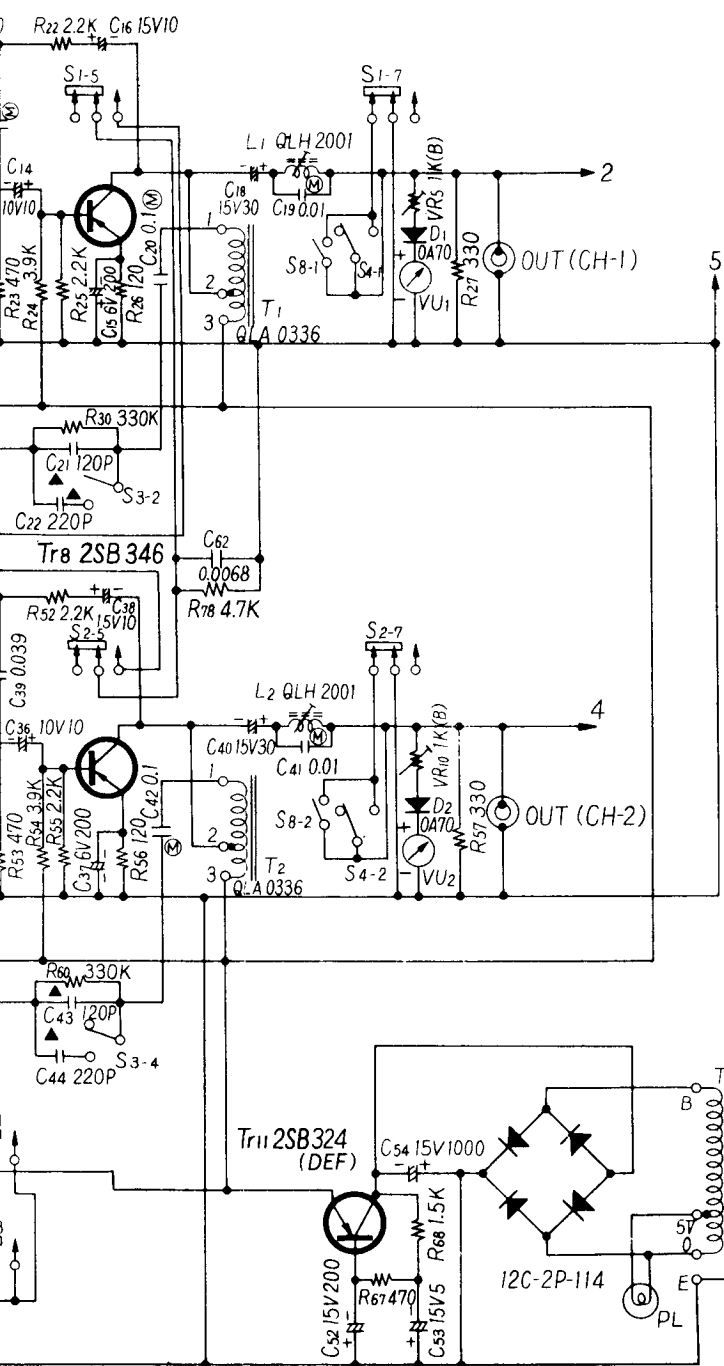


190-1669	
NO. REQ'D.	USED ON
	11A460

Tr4 2SB346

CH-1-CH-2 OFF CH-2-CH-1



- NOTES:
- 1) Shown in Stereo Playback Mode (7½ ips Speed)
 - 2) S1-1 to S1-8, S2-1 to S2-8: Record/Playback Selector Switch
 - 3) S3-1 to S3-4: Equalization Selector Switch
 - 4) S4-1 to S4-2: Stop Switch (ON, in STOP position)
 - 5) S6: Automatic Shut-Off Switch
 - 6) S7: Power ON/OFF Switch
 - 7) S8: Stop Switch (ON, in PAUSE or FF position)
 - 8) Resistors are ¼ watt unless specified in the blanket.
 K.....K Ω Δ.....Solid Resistor
 M.....M Ω □.....Wire Wound Resistor
 No Mark.....Ω
 - 9) Capacitors are μF unless specified.
 P=Micro-microfarad
 M=Mylar T=Titanium
 □=Paper Δ=Metallized Paper
 S=Polystyrene ▲=Mica
 - 10) S9: Sound-on-Sound Switch

MATERIAL	FINISH	ISSUE	W A S	DATE	APPR.
----------	--------	-------	-------	------	-------

DUKANE Corporation ESTABLISHED 1922 ST. CHARLES, ILLINOIS U.S.A.	SCHEMATIC DIAGRAM NO. 594-69 TAPE RECORDER	SCALE	DATE 10-16-68
		DRAWN <i>AW</i>	APP'D. <i>AW</i>
		CHECKED	ENGR. <i>AW</i>

NO. 190-1669 - ISSUE