

WE SIMPLY SOUND BETTER.

Reference 7250 / 7260

SERVICE MANUAL

B&K COMPONENTS, LTD.
2100 Old Union Road
Buffalo, New York 14227-2725
U.S.A.

B & K

WE SIMPLY SOUND BETTER.

Pictures


B&K COMPONENTS, LTD.
2100 Old Union Road
Buffalo, New York 14227-2725
U.S.A.


Reference 7250 series II Amplifier





Reference 7250 Amplifier

CONTROL I/O


CTRL IN 

CTRL IN ENABLE 

CTRL OUT 12VDC 125mA 

DEFEAT 













WHEN SWITCH IS SET TO ENABLE, THE AMPLIFIER WILL ONLY OPERATE WHILE A 5-24V SIGNAL IS APPLIED TO CTRL IN



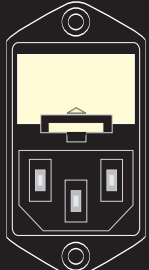
B&K
 WE SIMPLY SOUND BETTER.
 B&K Components, Ltd.
 Made in the U.S.A.
www.bkcomp.com

SER. NO.

INPUTS / LEVEL CONTROLS

LEVEL 1	LEVEL 2	LEVEL 3	LEVEL 4	LEVEL 5	LEVEL 6
					
LO HI	LO HI	LO HI	LO HI	LO HI	LO HI
					
INPUT 1	INPUT 2	INPUT 3	INPUT 4	INPUT 5	INPUT 6

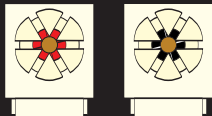
FUSE
 CAUTION: FOR CONTINUED PROTECTION AGAINST RISK OF FIRE REPLACE ONLY WITH SAME TYPE 15A 250V.



VOLTAGE ~ A.C. LINE

FUSE

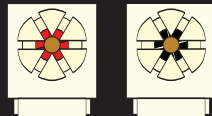
CHANNEL 1 OUTPUT



PLUS + MINUS -

FUSE

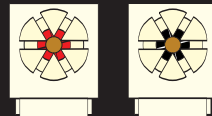
CHANNEL 2 OUTPUT



PLUS + MINUS -

FUSE

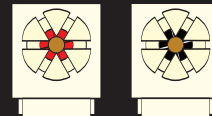
CHANNEL 3 OUTPUT



PLUS + MINUS -

FUSE

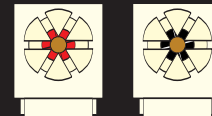
CHANNEL 4 OUTPUT



PLUS + MINUS -

FUSE

CHANNEL 5 OUTPUT



PLUS + MINUS -

FUSE

CHANNEL 6 OUTPUT

PLUS + MINUS -

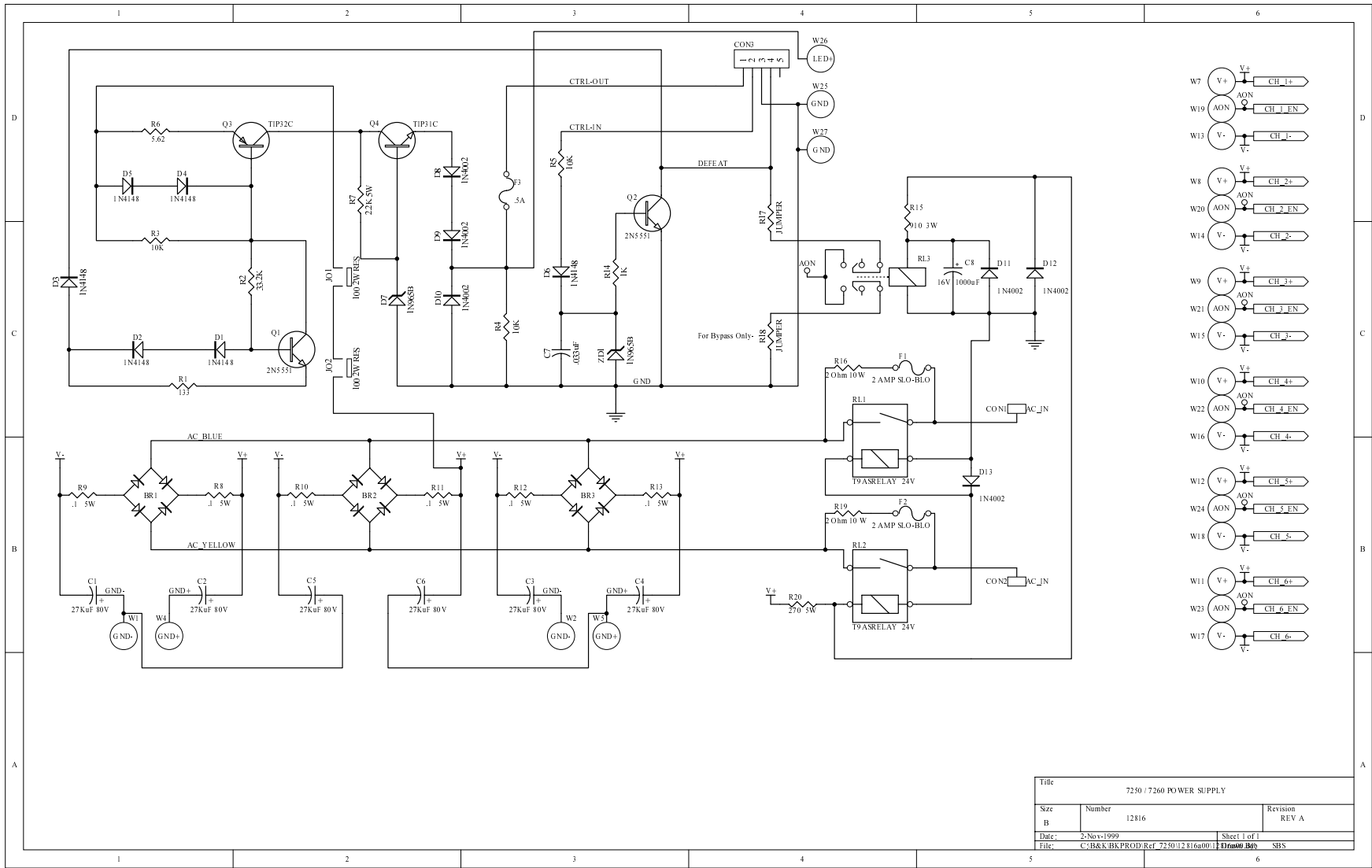
CAUTION
 RISK OF ELECTRIC SHOCK
 DO NOT OPEN

B & K

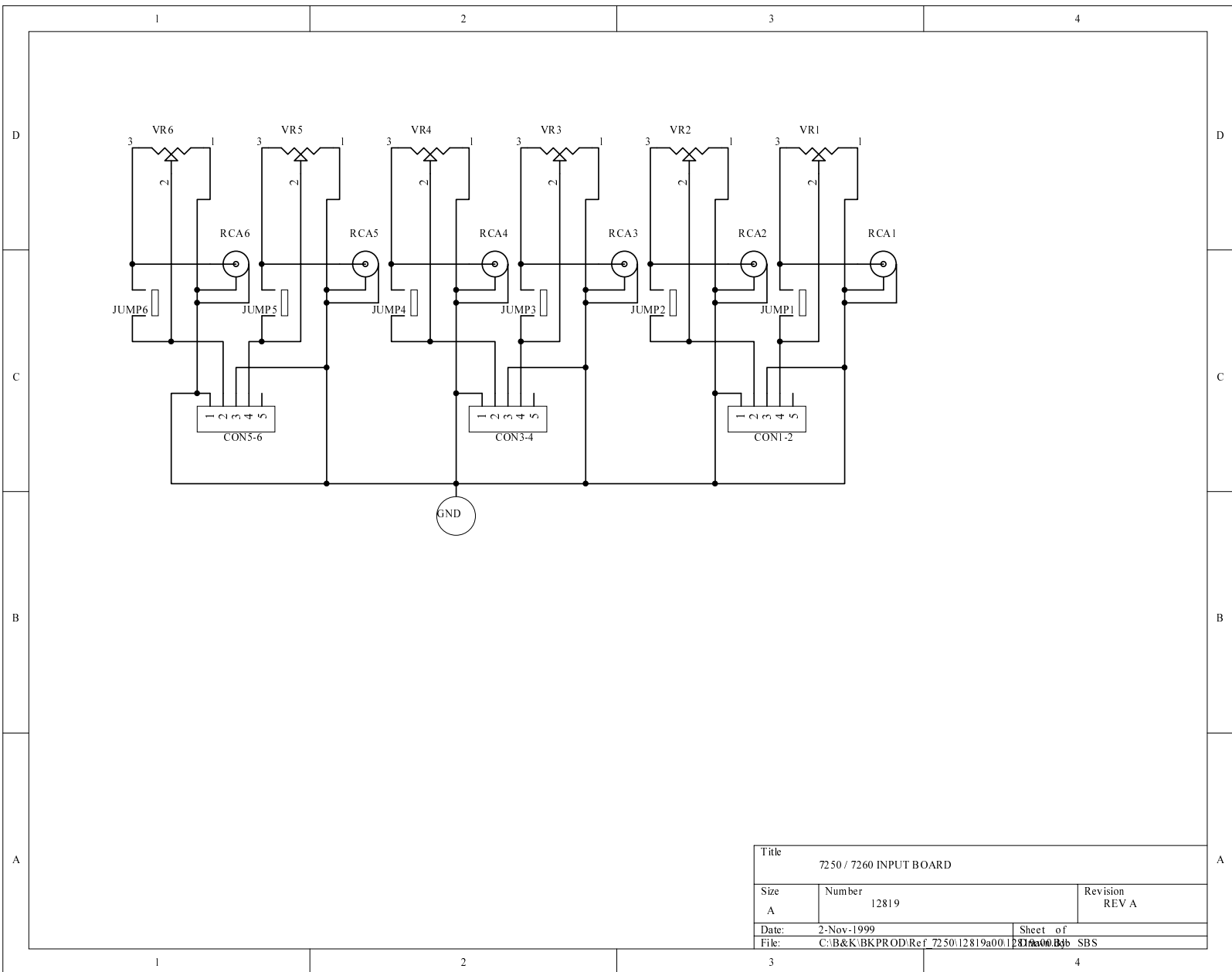
WE SIMPLY SOUND BETTER.

Schematics

B&K COMPONENTS, LTD.
2100 Old Union Road
Buffalo, New York 14227-2725
U.S.A.

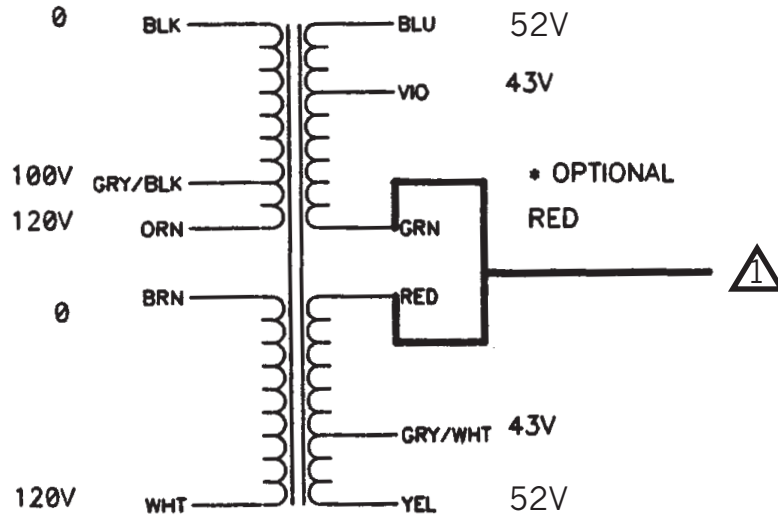


Title		
7250 / 7260 POWER SUPPLY		
Size	Number	Revision
B	12816	REV A
Date:	2-Nov-1999	Sheet 1 of 1
File:	C:\B&K\BKPROD\Ref 7250\12816a000\12816a000.Bk	SBS




Title		
7250 / 7260 INPUT BOARD		
Size	Number	Revision
A	12819	REV A
Date:	2-Nov-1999	Sheet of
File:	C:\B&K\BKPROD\Ref 7250\12819a00.1	11 of 00
		SBS

1500VA MULTI SEC/PRI TOROID



ALL LEADS EXCEPT  TERMINATED WITH 0.250 INSULATED FEMALE DISCONNECT (PANDUIT DNF14-250FIB OR APP'D EQUIV.)

 TERMINATED WITH VINYL INSULATED RING TERMINAL FOR #10 STUD (PANDUIT PV12-10HDR OR APP'D EQUIV.)

THE SECONDARY VOLTAGES LISTED ARE FOR FULL LOAD CONDITIONS MAX DIMENSIONS OF TOROIDAL TRANSFORMER:

HEIGHT: 4.75"
DIAMETER: 6.75"

LEADS: 10" LENGTH 14 AWG TEW 105 DEG. C - LEADS TO BE BROUGHT OUT SIDE OF CASE NEAR BOTTOM WITH PRIMARY/SECONDARY LEADS SPLIT 180 DEGREES TRANSFORMER TO BE SUPPLIED WITH CYLINDRICAL DECORATIVE COVER - COLOR BLACK. TRANSFORMER POTTING COMPOUND TO EXTEND TO LOWER LIP OF COVER TO PROVIDE FLUSH MOUNTING SURFACE MOUNTING: SINGLE CENTER 3/8" - 16 THREADED INSERT (must be a 3/8" = 0.375" = 9.525mm mounting hole) EXTENDING A MINIMUM OF 2" FROM BOTTOM ISOLATION PAD: 1/4" THICK NEOPRENE RUBBER

Rev D	Increased length of all wires 1 inch - primaries and secondaries.	10/22/99
Rev C	Increased Max. Diameter to 6.75" Isolation Pad Specifications: 1/4" Thick Neoprene Rubber	9/22/99
Rev B	Added Potting Spec Added Mounting Insert Length Spec Added Lead Termination Specs	8/30/99
Rev A	Chg. Sec. Voltage from 48V to 52 V Added Lead Routing Spec Added Mounting Insert Spec	7/8/99

B&K COMPONENTS LTD.

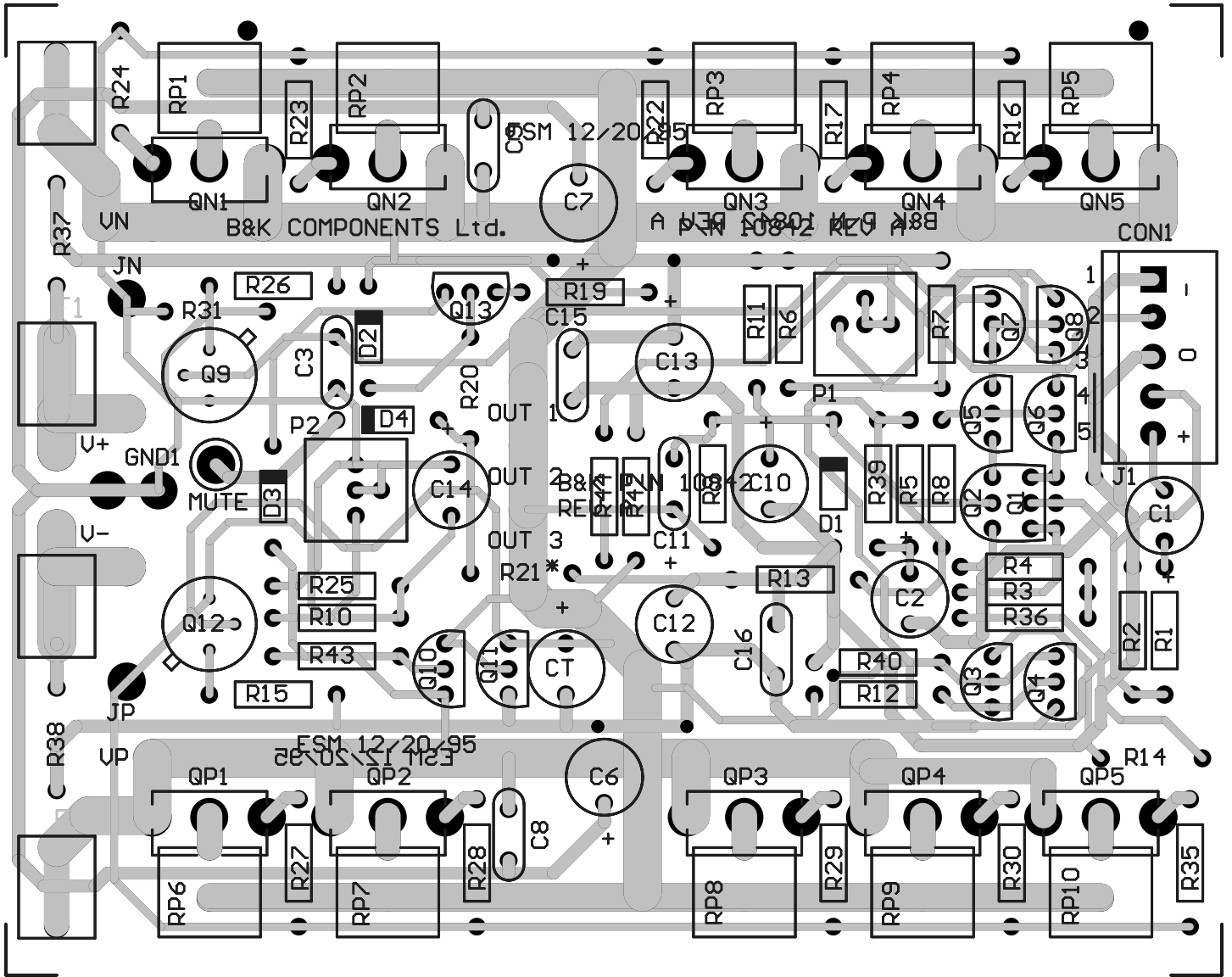
Size	Number	Rev
A	P/N 12786 1500VA MULTI SEC/PRI SK-RWW-5/31/99-A	D
Date	10/22/99	Drawn By RWW/SBS

B & K

WE SIMPLY SOUND BETTER.

Printed Circuit Boards
PCB's

B&K COMPONENTS, LTD.
2100 Old Union Road
Buffalo, New York 14227-2725
U.S.A.



B&K COMPONENTS Ltd.

FSM 12/20-95

B&K COMPONENTS Ltd.

FSM 12/20-95

FSM 12/20-95

CON1

J1

R14

QP1

QP2

QP3

QP4

QP5

RP6

RP7

RP8

RP9

RP10

RP1

RP2

RP3

RP4

RP5

QN1

QN2

QN3

QN4

QN5

Q9

Q13

Q10

Q5

Q6

Q12

Q10

Q11

Q2

Q1

Q3

Q4

R15

R10

R25

R21*

R12

R13

R39

R5

R8

R24

R26

R19

R11

R6

R7

R37

R31

R20

R44

R42

R39

R40

R12

R23

R27

R28

R29

R30

R35

R38

R43

R15

R16

R17

R16

R16

R37

R31

R20

R44

R42

R39

R40

R12

R23

R27

R28

R29

R30

R35

R38

R43

R15

R16

R17

R16

R16

R37

R31

R20

R44

R42

R39

R40

R12

R23

R27

R28

R29

R30

R35

R38

R43

R15

R16

R17

R16

R16

R37

R31

R20

R44

R42

R39

R40

R12

R23

R27

R28

R29

R30

R35

R38

R43

R15

R16

R17

R16

R16

R37

R31

R20

R44

R42

R39

R40

R12

R23

R27

R28

R29

R30

R35

R38

R43

R15

R16

R17

R16

R16

R37

R31

R20

R44

R42

R39

R40

R12

R23

R27

R28

R29

R30

R35

R38

R43

R15

R16

R17

R16

R16

R37

R31

R20

R44

R42

R39

R40

R12

R23

R27

R28

R29

R30

R35

R38

R43

R15

R16

R17

R16

R16

R37

R31

R20

R44

R42

R39

R40

R12

R23

R27

R28

R29

R30

R35

R38

R43

R15

R16

R17

R16

R16

R37

R31

R20

R44

R42

R39

R40

R12

R23

R27

R28

R29

R30

R35

R38

R43

R15

R16

R17

R16

R16

R37

R31

R20

R44

R42

R39

R40

R12

R23

R27

R28

R29

R30

R35

R38

R43

R15

R16

R17

R16

R16

R37

R31

R20

R44

R42

R39

R40

R12

R23

R27

R28

R29

R30

R35

R38

R43

R15

R16

R17

R16

R16

R37

R31

R20

R44

R42

R39

R40

R12

R23

R27

R28

R29

R30

R35

R38

R43

R15

R16

R17

R16

R16

R37

R31

R20

R44

R42

R39

R40

R12

R23

R27

R28

R29

R30

R35

R38

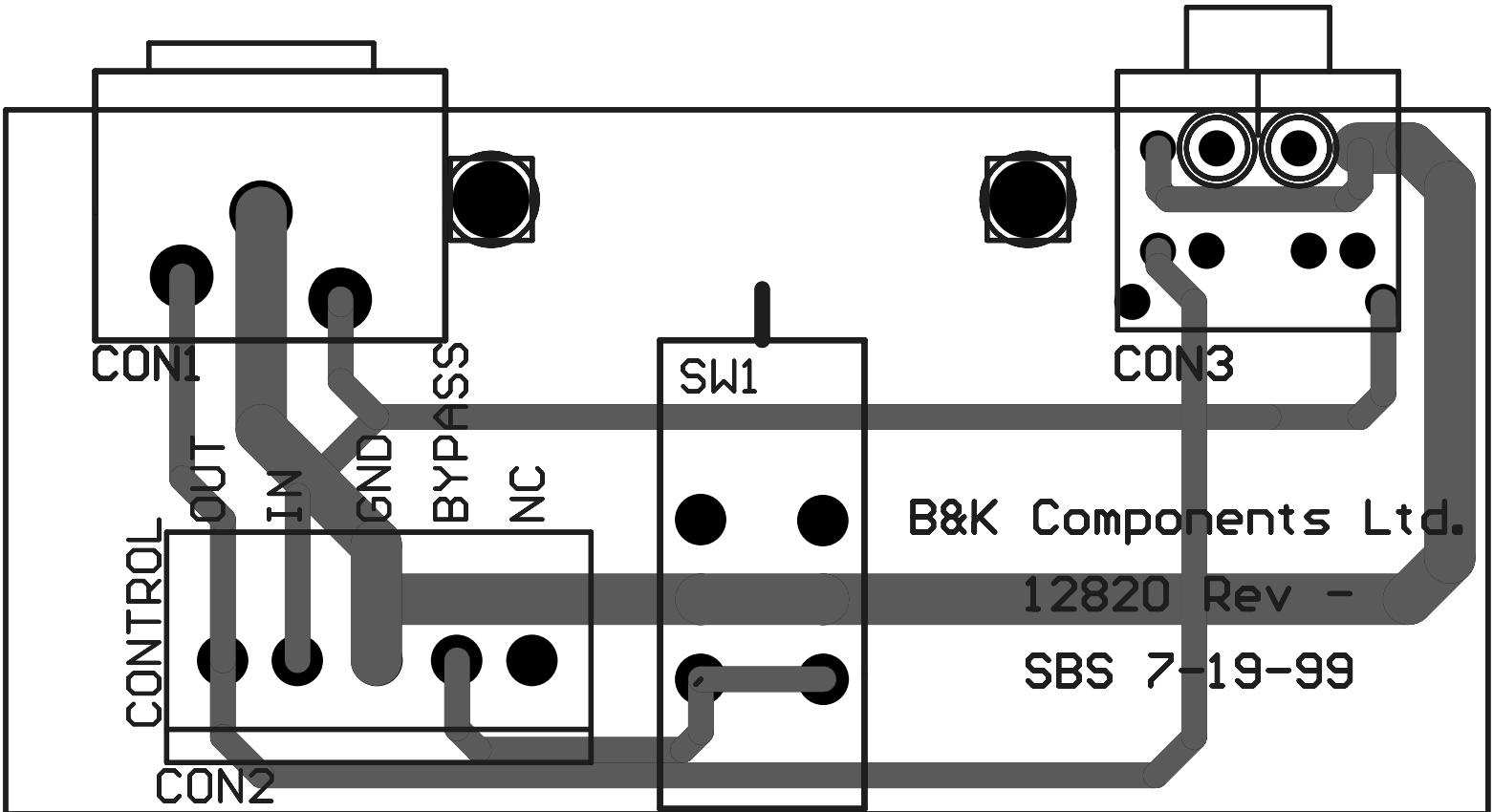
R43

R15

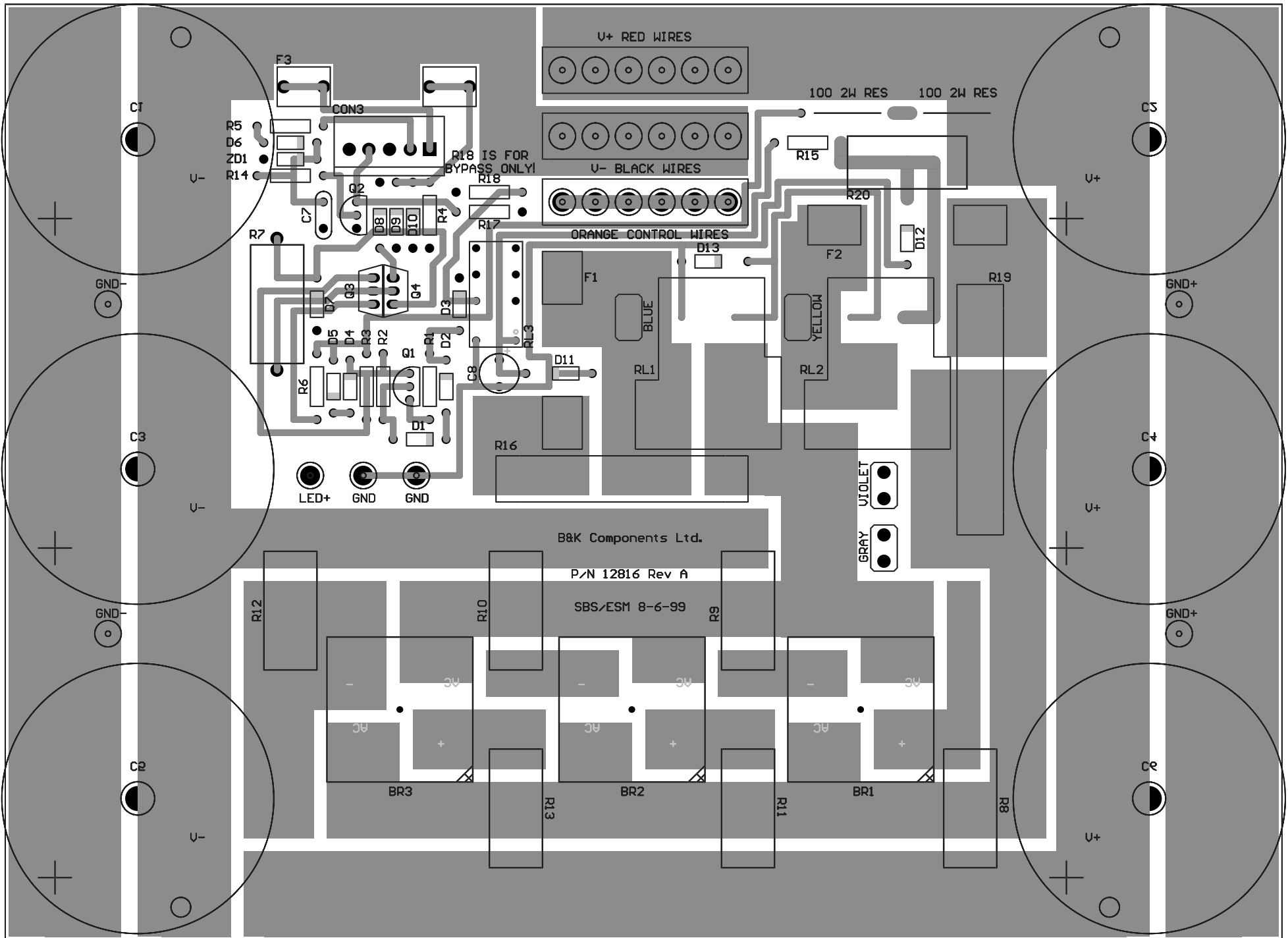
R16

R17

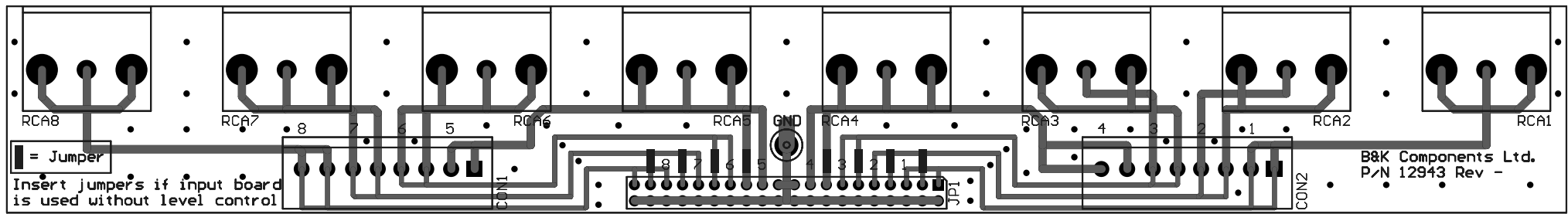
R16

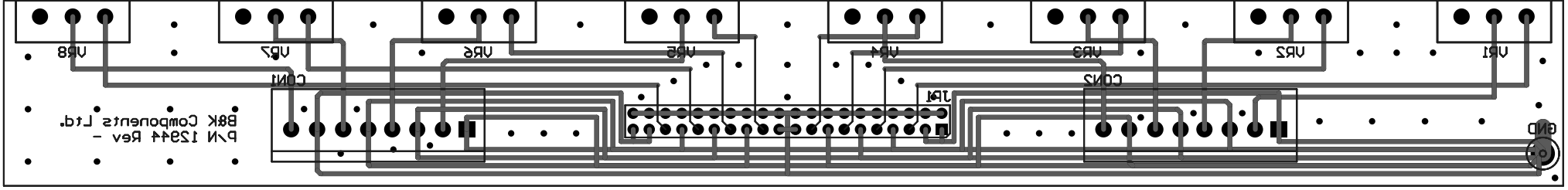


Holes within a circle are not to be plated through
 2 X .102
 2 X .125



Holes Within A Circle Are Not to Be Plated Through
 6 x .187
 4 x .078





B & K

WE SIMPLY SOUND BETTER.

Bill of Materials

BOM's

B&K COMPONENTS, LTD.
2100 Old Union Road
Buffalo, New York 14227-2725
U.S.A.

Bill of Material for 10842b00. Bom

Used	Part Type	Designator	Footprint	Description
5	.12uF	C8 C9 C10	RAD200	CAPACITOR
		C15 C16		
10	.47 5W	RP1 RP2	R5W. S	RESISTOR
		RP3 RP4		
		RP5 RP6		
		RP7 RP8		
		RP9 RP10		
1	1.5K	R24	RES400	RESISTOR
10	1.5K	R1 R16 R17	RES500	RESISTOR
		R22 R23		
		R27 R28		
		R29 R30 R35		
1	1K	R43	RES500	RESISTOR
1	1M	R18	RES400	RESISTOR
1	1N965B	D2	DIODE. 4	ZENER DIODE
1	1N4148	D4	DIODE. 4	DIODE
1	1N4751	D3	DIODE. 4	ZENER DIODE
1	1N4751	D1	DIODE. 5	ZENER DIODE
3	2.26K	R5 R11 R39	RES500	RESISTOR
1	2N3440	Q12	T05	NPN TRANSISTOR
2	2N5087 M	Q7 Q8	T092	PNP TRANSISTOR
6	2N5210	Q3 Q4 Q5	T092	NPN TRANSISTOR
		Q6 Q10 Q11		
2	2N5210 M	Q1 Q2	T092	NPN TRANSISTOR
1	2N5401	Q13	T092	PNP TRANSISTOR
1	2N5416	Q9	T05	PNP TRANSISTOR
5	2SJ162	QP1 QP2	LATERAL3P	HITACHI P CH LATERAL MOSFET
		QP3 QP4		
		QP5		
5	2SK1058	QN1 QN2	LATERAL3P	HITACHI N CH LATERAL MOSFET
		QN3 QN4 QN5		
2	6A SLOW	F1 F2	FUSE. 3AG	FUSE
2	10K	R19 R36	RES500	RESISTOR
1	10uF 25V	C14	CAP200RP	POLAR CAPACITOR
1	10uF/25V	C1	CAP200RP	POLAR CAPACITOR
1	33.2K	R20	RES400	RESISTOR
4	33.2K	R2 R9 R13	RES500	RESISTOR
		R44		
2	47.5	R15 R26	RES500	RESISTOR
1	47.5K	R31	RES400	RESISTOR
1	47.5K	R42	RES500	RESISTOR
1	100uF 25V	C4	CAP200RP	POLAR CAPACITOR
2	100 uF 100V	C7 C13	CAP200RP	POLAR CAPACITOR
2	100uF 100V	C6 C12	CAP200RP	POLAR CAPACITOR
1	100uF/25V	C2	CAP200RP	POLAR CAPACITOR
1	120pF	C3	RAD200	CAPACITOR
1	133	R6	RES500	RESISTOR
5	221	R3 R4 R7	RES500	RESISTOR
		R8 R12		
1	221K	R40	RES500	RESISTOR
1	475	R25	RES500	RESISTOR
2	500	P1 P2	TRIMPOT	SINGLE POT
1	GND1	W13	PC_PAD	MOLEX 102" PC MOUNT CRIMP CONNECTOR
1	GND2	W14	PC_PAD	MOLEX 102" PC MOUNT CRIMP CONNECTOR
1	JN	W6	PC_PAD	MOLEX 102" PC MOUNT CRIMP CONNECTOR
1	JP	W10	PC_PAD	MOLEX 102" PC MOUNT CRIMP CONNECTOR
3	JUMPER	R14 R37	RES400	RESISTOR
		R38		
1	JUMPER	R10	RES500	RESISTOR
1	MUTE	W5	PC_PAD	MOLEX 102" PC MOUNT CRIMP CONNECTOR
1	OPEN	C11	RAD200	CAPACITOR
1	OPEN	R21	RES400	RESISTOR
1	OUT1	W3	PC_PAD	MOLEX 102" PC MOUNT CRIMP CONNECTOR
1	OUT2	W11	PC_PAD	MOLEX 102" PC MOUNT CRIMP CONNECTOR
1	OUT3	W12	PC_PAD	MOLEX 102" PC MOUNT CRIMP CONNECTOR
1	V+a	W4	PC_PAD	MOLEX 102" PC MOUNT CRIMP CONNECTOR
1	V+b	W2	PC_PAD	MOLEX 102" PC MOUNT CRIMP CONNECTOR
1	V-a	W9	PC_PAD	MOLEX 102" PC MOUNT CRIMP CONNECTOR
1	V-b	W8	PC_PAD	MOLEX 102" PC MOUNT CRIMP CONNECTOR
1	VN	W1	PC_PAD	MOLEX 102" PC MOUNT CRIMP CONNECTOR
1	VP	W7	PC_PAD	MOLEX 102" PC MOUNT CRIMP CONNECTOR
1	WI RE	J1	JUMP. 5	JUMPER (NORM OPEN)

Bill of Material for 12820a00.Bom

Used	Part Type	Designator	Footprint	Description
1	PC_PAD	SW1	2PDT. 24	SWITCH DPDT
1	PC_PAD	CON3	7275-8NB	DUAL 3.5mm DUAL STEREO JACK similar to 35RAPC7J
1	PC_PAD	CON1	RCA.X1	R/W AUD CONN COMMON SHELL X 1
1	PC_PAD	CON2	SIP5	

Bill of Material for 12816a00.Bom

Used	Part Type	Designator	Footprint	Description
1	.5A	F3	FUSE.3AG	FUSE
6	.1 5W	R8 R9 R10 R11 R12 R13	RES5WAXIAL	RESISTOR
1	.033uF	C7	RAD200	CAPACITOR
1	1K	R14	RES500	RESISTOR
2	1N965B	D7 ZD1	DIODE.4	ZENER DIODE
6	1N4002	D8 D9 D10 D11 D12 D13	DIODE.5	DIODE
6	1N4148	D1 D2 D3 D4 D5 D6	DIODE.4	DIODE
1	2.2K 5W	R7	RES5WAXIAL	RESISTOR
2	2 AMP SLO-BLO	F1 F2	FUSE.3AG	FUSE
2	2N5551	Q1 Q2	T092	NPN TRANSISTOR
1	2 Ohm 10 W	R19	RES10WAXIAL	RESISTOR
1	2 Ohm 10W	R16	RES10WAXIAL	RESISTOR
1	5.62	R6	RES500	RESISTOR
3	10K	R3 R4 R5	RES500	RESISTOR
1	16V 1000uF	C8	CAP200RP	POLAR CAPACITOR
6	27KuF 80V	C1 C2 C3 C4 C5 C6	PCAP_2.BIG	POLAR CAPACITOR
1	33.2K	R2	RES500	RESISTOR
1	133	R1	RES500	RESISTOR
2	100 2W RES	J01 J02	JUMP.7	JUMPER (NORM OPEN)
1	270 5W	R20	RES5WAXIAL	RESISTOR
1	910 3W	R15	RES500	RESISTOR
2	AC_IN	CON1 CON2	FASTON.25	PC MOUNT FASTON CONNECTOR
6	AON	W19 W20 W21 W22 W23 W24	PC_PAD	MOLEX 102" PC MOUNT CRIMP CONNECTOR
3	BRIDGE_RECT	BR1 BR2 BR3	BRIDGE_HP	BRIDGE RECTIFIER
1	CON5	CON3	MOLEX5	
1	DPDT_RELAY_1	RL3	DPDT_RLY1	DPDT RELAY
2	GND+	W4 W5	PC_PAD	MOLEX 102" PC MOUNT CRIMP CONNECTOR
2	GND-	W1 W2	PC_PAD	MOLEX 102" PC MOUNT CRIMP CONNECTOR
2	GND	W25 W27	PC_PAD	MOLEX 102" PC MOUNT CRIMP CONNECTOR
2	JUMPER	R17 R18	RES500	RESISTOR
1	LED+	W26	PC_PAD	MOLEX 102" PC MOUNT CRIMP CONNECTOR
2	T9ASRELAY 24V	RL1 RL2	T9ASRELAY	SPST RELAY 30AMP
1	TIP31C	Q4	T0220	NPN POWER TRANSISTOR
1	TIP32C	Q3	T0220	PNP POWER TRANSISTOR
6	V+	W7 W8 W9 W10 W11 W12	PC_PAD	MOLEX 102" PC MOUNT CRIMP CONNECTOR
6	V-	W13 W14 W15 W16 W17 W18	PC_PAD	MOLEX 102" PC MOUNT CRIMP CONNECTOR

Bill of Material for 12943-00.Bom

Used	Part Type	Designator	Footprint	Description
2	CON8	CON1 CON2	MOLEX8	8 PIN MOLEX CONNECTOR
1	GND	W1	PC_PAD	MOLEX 102" PC MOUNT CRIMP CONNECTOR
1	HEADER_2X20	JP1	40PINHEAD	HEADER 20X2
8	RCA	RCA1 RCA2 RCA3 RCA4 RCA5 RCA6 RCA7 RCA8	PCB_RCA	RCA CONNECTOR

Bill of Material for 12944-00.Bom

Used	Part Type	Designator	Footprint	Description
2	CON8	CON1 CON2	MOLEX8	8 PIN MOLEX CONNECTOR
1	GND	W1	PC_PAD	MOLEX 102" PC MOUNT CRIMP CONNECTOR
1	HEADER_2X20	JP1	40PINHEAD	HEADER 20X2
8	TRIM_POT	VR1 VR2	SINGLPOT	Trim Pot
		VR3 VR4		
		VR5 VR6		
		VR7 VR8		