

aiwa



AM-ST40

MINIDISC PLAYER

• BASIC MD MECHANISM: 8ZG-6 A

• TYPE: AHR

SIMPLE MANUAL

• Replace this Service Manual with "Revision Publishing" when it is issued.

S/M Code No. 09-993-409-3T2

MANUAL
SERVICE

ELECTRICAL MAIN PARTS LIST - 1/2

NOTE: The characters in the suffix column indicate the part usage.

AHR	REF.NO	PARTS NO.	XX KANRI NO.	DESCRIPTION	A SUFFIX
		8Z-HM4-611-010		PWB,FLEX JACK EX	A.....
*		8Z-HM4-603-110		PWB,FLEX MECHA	A.....
*		8Z-HM4-604-010		PWB,FLEX JACK
J	701	87-A60-682-010		JACK,3.5 ST 7P	A.....
C	109	87-010-787-080		CAP, U 0.022-25	A.....
C	108	87-012-286-080		CAP, U 0.01-25	A.....
C	102	87-016-296-080		C-CAP,TN 22-4SV(A)	A.....
C	103	87-016-296-080		C-CAP,TN 22-4SV(A)	A.....
C	106	87-016-296-080		C-CAP,TN 22-4SV(A)	A.....
C	100	87-016-296-080		C-CAP,TN 22-4SV(A)	A.....
C	104	87-A10-057-080		C-CAP,TN 100-4 F95 E	A.....
C	107	87-A10-504-080		C-CAP,U 0.047-16 K B	A.....
C	119	87-010-787-080		CAP, U 0.022-25	A.....
C	116	87-012-195-080		C-CAP,U 100P-50CH	A.....
C	111	87-012-282-080		CAP, U 4700P-50	A.....
C	113	87-012-282-080		CAP, U 4700P-50	A.....
C	118	87-012-286-080		CAP, U 0.01-25	A.....
C	117	87-012-286-080		CAP, U 0.01-25	A.....
C	115	87-016-448-080		C-CAP,TN 2.2-10 F95P	A.....
C	110	87-A10-353-080		C-CAP,U0.22-10KB	A.....
C	114	87-A11-049-080		C-CAP,U 1-6.3 K B	A.....
C	112	87-A11-049-080		C-CAP,U 1-6.3 K B	A.....
C	125	87-012-274-080		CHIP CAP,U 1000P-50B	A.....
C	126	87-012-274-080		CHIP CAP,U 1000P-50B	A.....
C	127	87-012-274-080		CHIP CAP,U 1000P-50B	A.....
C	129	87-012-274-080		CHIP CAP,U 1000P-50B	A.....
C	124	87-012-274-080		CHIP CAP,U 1000P-50B	A.....
C	128	87-012-274-080		CHIP CAP,U 1000P-50B	A.....
C	120	87-012-284-080		CAP, U 6800P-50	A.....
C	122	87-012-286-080		CAP, U 0.01-25	A.....
C	123	87-012-286-080		CAP, U 0.01-25	A.....
C	121	87-A10-504-080		C-CAP,U 0.047-16 K B	A.....
CN	100	87-A60-470-080		C-CONN,22P H SFV2ST	A.....
IC	100	87-A20-707-010		C-IC,CXA2523AR	A.....
L	100	87-A50-108-080		C-COIL,330H K NLC	A.....
L	102	87-A50-108-080		C-COIL,330H K NLC	A.....
O	104	87-026-644-080		C-TR,DTA144EE	A.....
O	101	87-A30-148-080		C-TR,2SC4738GR	A.....
O	100	89-115-884-080		CHIP -TRANSISTER 2SA1588Y	A.....
C	206	87-012-270-080		CAP, U 470P-50	A.....
C	202	87-012-280-080		CAP, U 3300P-50	A.....
C	208	87-012-286-080		CAP, U 0.01-25	A.....
C	205	87-016-453-080		C-CAP,U 0.1-16 BK	A.....
C	203	87-016-453-080		C-CAP,U 0.1-16 BK	A.....
C	204	87-A10-902-080		C-CAP,U 0.47-10 K B	A.....
C	207	87-A10-902-080		C-CAP,U 0.47-10 K B	A.....
C	216	87-010-785-080		C-CAP,U0.015-25BK	A.....
C	214	87-A10-353-080		C-CAP,U0.22-10KB	A.....
C	217	87-A10-954-080		C-CAP,TN 22-4 MCR	A.....
C	212	87-A10-954-080		C-CAP,TN 22-4 MCR	A.....
IC	200	87-A20-931-010		C-IC,CXD2655R	A.....
IC	204	87-A21-027-080		C-IC,TC7W66FU	A.....
IC	203	87-A21-140-010		C-IC,MSM51V17400D	A.....
L	200	87-A50-358-080		C-COIL, 10UH K NLFC252018	A.....
O	205	87-026-644-080		C-TR,DTA144EE	A.....
O	201	87-A30-147-080		C-TR,2SA1832GR	A.....
O	202	87-A30-147-080		C-TR,2SA1832GR	A.....
O	200	87-A30-147-080		C-TR,2SA1832GR	A.....
R	209	87-A91-358-080		C-F-BEAD, BK1005HM102	A.....
X	201	87-A70-158-080		C-VIB,CER 22.57MHZ SSR-B	A.....
C	415	87-012-278-080		C-CAP,U 2200P-50 B	A.....
C	416	87-012-278-080		C-CAP,U 2200P-50 B	A.....
C	414	87-012-278-080		C-CAP,U 2200P-50 B	A.....
C	417	87-016-453-080		C-CAP,U 0.1-16 BK	A.....
C	418	87-016-453-080		C-CAP,U 0.1-16 BK	A.....
C	419	87-016-453-080		C-CAP,U 0.1-16 BK	A.....
C	413	87-A11-049-080		C-CAP,U 1-6.3 K B	A.....
C	411	87-A11-070-080		C-CAP,U 0.033-16 K B	A.....
C	412	87-A11-070-080		C-CAP,U 0.033-16 K B	A.....
C	422	87-016-453-080		C-CAP,U 0.1-16 BK	A.....
C	424	87-016-453-080		C-CAP,U 0.1-16 BK	A.....
C	428	87-016-453-080		C-CAP,U 0.1-16 BK	A.....
C	423	87-016-453-080		C-CAP,U 0.1-16 BK	A.....
C	429	87-A10-057-080		C-CAP,TN 100-4 F95 E	A.....
C	420	87-A11-049-080		C-CAP,U 1-6.3 K B	A.....
C	421	87-A11-049-080		C-CAP,U 1-6.3 K B	A.....
C	432	87-016-296-080		C-CAP,TN 22-4SV(A)	A.....
C	431	87-A10-057-080		C-CAP,TN 100-4 F95 E	A.....
C	430	87-A10-057-080		C-CAP,TN 100-4 F95 E	A.....
CN	401	87-A60-795-080		C-CONN,8P H SFV1ST	A.....
IC	411	87-A21-024-010		C-IC,BD6601KV	A.....
L	414	87-A50-358-080		C-COIL, 10UH K NLFC252018	A.....
L	417	87-A50-358-080		C-COIL, 10UH K NLFC252018	A.....
L	413	87-A50-358-080		C-COIL, 10UH K NLFC252018	A.....
L	412	87-A50-358-080		C-COIL, 10UH K NLFC252018	A.....
L	411	87-A50-358-080		C-COIL, 10UH K NLFC252018	A.....

ELECTRICAL MAIN PARTS LIST - 2/2

L	415	87-A50-361-080	C-COIL, 100UH K NLFC252018	A.....
OO	402	87-A30-235-080	C-TR,UMD2N	A.....
CC	401	87-A30-261-080	C-FET,FDC633N	A.....
CC	704	87-012-195-080	C-CAP,U 100P-50CH	A.....
CC	703	87-012-195-080	C-CAP,U 100P-50CH	A.....
CC	700	87-012-286-080	CAP, U 0.01-25	A.....
CC	701	87-A11-049-080	C-CAP,U 1-6.3 K B	A.....
CC	702	87-A11-049-080	C-CAP,U 1-6.3 K B	A.....
CC	777	87-A10-057-080	C-CAP,TN 100-4 F95 E	A.....
CC	778	87-A10-057-080	C-CAP,TN 100-4 F95 E	A.....
CC	776	87-A10-057-080	C-CAP,TN 100-4 F95 E	A.....
CC	779	87-A10-057-080	C-CAP,TN 100-4 F95 E	A.....
CC	771	87-A11-049-080	C-CAP,U 1-6.3 K B	A.....
CC	772	87-A11-049-080	C-CAP,U 1-6.3 K B	A.....
CC	775	87-A11-049-080	C-CAP,U 1-6.3 K B	A.....
CC	770	87-A11-049-080	C-CAP,U 1-6.3 K B	A.....
CC	774	87-A11-049-080	C-CAP,U 1-6.3 K B	A.....
CC	773	87-A11-049-080	C-CAP,U 1-6.3 K B	A.....
CC	782	87-016-296-080	C-CAP,TN 22-4SV(A)	A.....
CC	785	87-016-296-080	C-CAP,TN 22-4SV(A)	A.....
CC	787	87-016-453-080	C-CAP,U 0.1-16 BK	A.....
CC	790	87-A10-504-080	C-CAP,U 0.047-16 K B	A.....
CN	701	87-A60-471-080	C-CONN,8P H SFV2ST	A.....
FB	704	87-A91-364-080	C-F-BEAD, BK1608HS601	A.....
FB	701	87-A91-364-080	C-F-BEAD, BK1608HS601	A.....
FB	703	87-A91-364-080	C-F-BEAD, BK1608HS601	A.....
FB	702	87-A91-364-080	C-F-BEAD, BK1608HS601	A.....
IC	770	87-A21-029-040	C-IC,BA3577FV	A.....
L	701	87-A50-358-080	C-COIL, 10UH K NLFC252018	A.....
L	771	87-A50-362-080	C-COIL,ACM2520-601-2P
L	770	87-A50-362-080	C-COIL,ACM2520-601-2P
R	793	87-A91-358-080	C-F-BEAD, BK1005HM102	A.....
R	796	87-A91-358-080	C-F-BEAD, BK1005HM102	A.....
CC	303	87-012-274-080	CHIP CAP,U 1000P-50B	A.....
CC	305	87-012-286-080	CAP, U 0.01-25	A.....
CC	307	87-016-453-080	C-CAP,U 0.1-16 BK	A.....
CC	302	87-016-453-080	C-CAP,U 0.1-16 BK	A.....
CC	306	87-016-453-080	C-CAP,U 0.1-16 BK	A.....
CC	301	87-016-453-080	C-CAP,U 0.1-16 BK	A.....
CC	309	87-016-453-080	C-CAP,U 0.1-16 BK	A.....
CC	310	87-012-286-080	CAP, U 0.01-25	A.....
CC	311	87-012-286-080	CAP, U 0.01-25	A.....
CC	312	87-016-453-080	C-CAP,U 0.1-16 BK	A.....
CN	301	87-A60-847-080	C-CONN,4P H 6206	A.....
D	301	87-070-398-080	C-LED,CL220HR	A.....
D	302	87-A40-124-080	C-DIODE,RB501V-40	A.....
D	304	87-A40-124-080	C-DIODE,RB501V-40	A.....
IC	302	87-A21-030-040	C-IC,S-93C46AMFN	A.....
IC	300	8Z-HM6-601-010	C-IC,CXP81952	A.....
OO	304	87-026-645-080	C-TR,DTC144EE	A.....
OO	303	87-A30-033-080	C-FET,2SK2035	A.....
R	304	87-022-239-080	C-RES,U 10K-1/16WF	A.....
S	300	87-A90-330-080	C-SW,SL 1-1-2 SSSS81	A.....
S	304	87-A90-952-080	C-SW,PUSH MPU10853MLB3	A.....
X	301	87-030-369-080	C-VIB,CER PBRC12.00B	A.....
CC	2	87-016-453-080	C-CAP,U 0.1-16 BK	A.....
CC	600	87-012-274-080	CHIP CAP,U 1000P-50B	A.....
CC	606	87-016-296-080	C-CAP,TN 22-4SV(A)	A.....
CC	605	87-016-296-080	C-CAP,TN 22-4SV(A)	A.....
CC	601	87-016-453-080	C-CAP,U 0.1-16 BK	A.....
CC	607	87-016-453-080	C-CAP,U 0.1-16 BK	A.....
CC	609	87-016-453-080	C-CAP,U 0.1-16 BK	A.....
CC	602	87-A10-591-080	C-CAP,TN 47-6.3 M F95-BCASE	A.....
CC	608	87-A10-954-080	C-CAP,TN 22-4 MCR	A.....
CC	603	87-A10-954-080	C-CAP,TN 22-4 MCR	A.....
CC	604	87-A10-955-080	C-CAP,TN 47-6.3 MCR	A.....
CC	610	87-016-453-080	C-CAP,U 0.1-16 BK	A.....
D	605	87-017-850-080	C-DIODE,DAP222	A.....
D	601	87-A40-540-080	C-DIODE,M1FP3	A.....
D	606	87-A40-540-080	C-DIODE,M1FP3	A.....
D	602	87-A40-540-080	C-DIODE,M1FP3	A.....
D	604	87-A40-541-080	C-DIODE,1SS362	A.....
F	600	87-A90-745-080	C-FUSE,750MA 13.2V MINISMDC075	A.....
F	601	87-A90-745-080	C-FUSE,750MA 13.2V MINISMDC075	A.....
IC	604	87-A20-674-040	C-IC,S-80825ANNP-EDN	A.....
IC	603	87-A20-674-040	C-IC,S-80825ANNP-EDN	A.....
IC	602	87-A21-026-080	C-IC,S-8327B25MC	A.....
IC	605	87-A21-028-080	C-IC,TK11224B	A.....
IC	601	87-A21-132-080	C-IC,S-8327B28MC	A.....
IC	610	87-A20-861-040	C-IC,S-80808ANNP	A.....
L	603	87-A50-324-080	C-COIL,47UH C4-K3L	A.....
L	602	87-A50-325-080	C-COIL,180UH C4-K3L	A.....
OO	605	87-026-645-080	C-TR,DTC144EE	A.....
OO	603	87-A30-033-080	C-FET,2SK2035	A.....
OO	606	87-A30-033-080	C-FET,2SK2035	A.....
OO	608	87-A30-183-040	C-TR,2SD1628G	A.....
OO	607	87-A30-235-080	C-TR,UMD2N	A.....
OO	601	87-A30-261-080	C-FET,FDC633N	A.....
OO	604	87-A30-262-080	C-FET,FDC634P	A.....
OO	602	87-A30-262-080	C-FET,FDC634P	A.....
R	608	87-022-294-080	C-RES,U 470K 1-16W F	A.....

MECHANICAL PARTS LIST - 1/1

NOTE: The characters in the suffix column indicate the part usage.

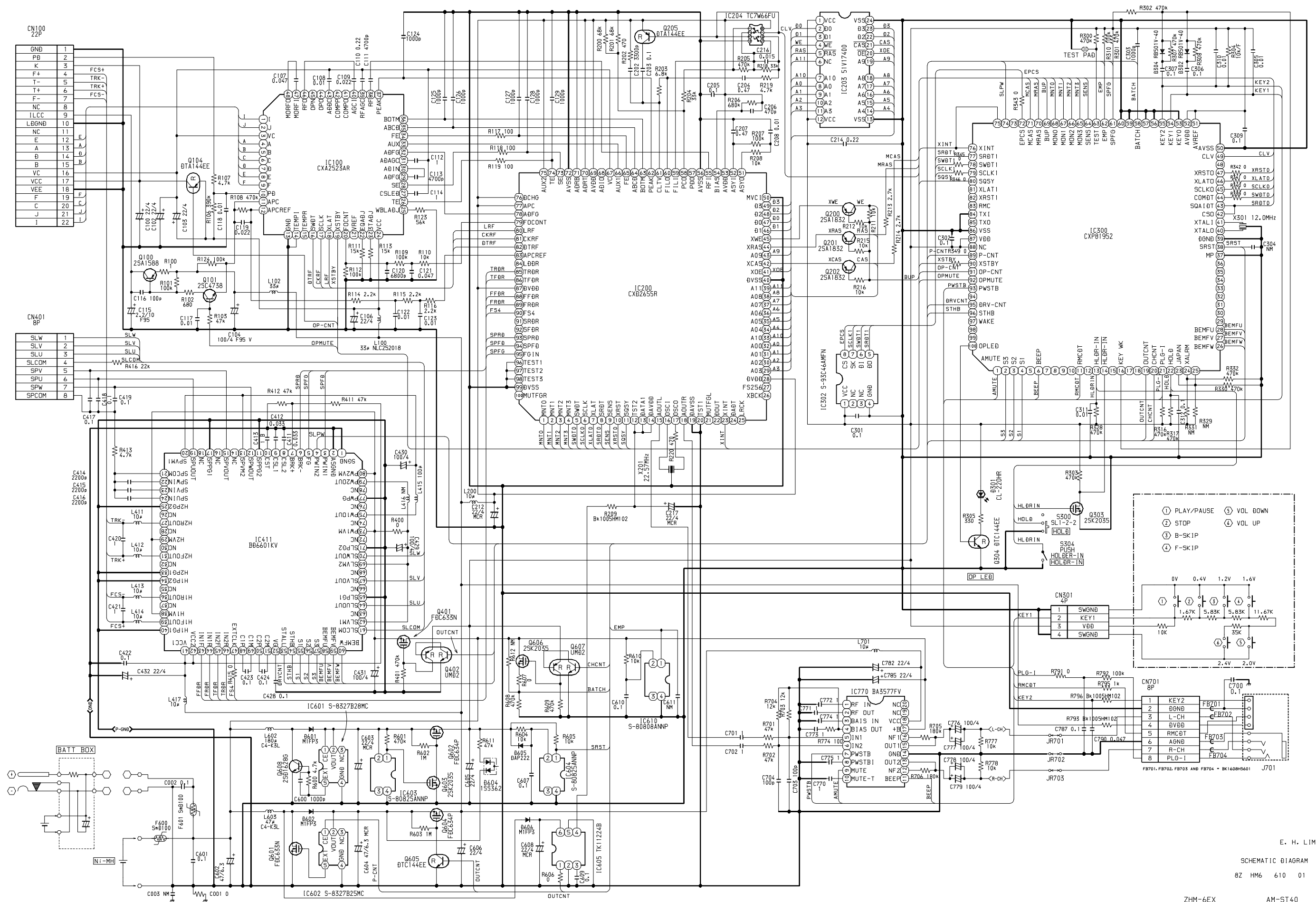
REF.NO	PARTS NO.	XX KANRI NO.	DESCRIPTION	SUFFIX
AHR				A
8Z-HM6-001-010			PANEL ASSY, TOP	A
8Z-HM6-003-010			FRAME, CENTER	A
8Z-HM6-004-010			LID, BAT	A
8Z-HM6-018-010			FRAME, CENTER R	A
8Z-HM6-011-010			KNOB, RTRY EJECT	A
8Z-HM6-012-010			KEY, MAIN	A
8Z-HM6-014-010			KNOB, SL HOLD	A
8Z-HM6-007-010			PANEL, BOT	.
8Z-HM6-021-010			PANEL, BOT EZ	.
8Z-HM6-022-010			PANEL, BOT HR	A
8Z-HM6-023-010			PANEL, BOT HK	.
8Z-HM6-016-010			LENS, LED	A
8Z-HM4-206-110			SPR-T, OPEN	A
8Z-HM4-207-010			SPR-P, TOP F	A
8Z-HM4-208-010			SPR-P, TOP R	A
8Z-HM4-213-010			COVER, BAT	A
8Z-HM4-214-110			DMPR, G	A
8Z-HM4-215-010			BAT-CONTACT, -	A
8Z-HM4-226-110			HLDR, PWB	A
8Z-HM4-230-010			SPR-E, EJECT	A
8Z-HM4-240-010			DMPR, R	A
8Z-HM4-249-010			W-M, 1.59-3.2-0.238	A
8Z-HM6-201-010			FRAME ASSY, FRONT	A
8Z-HM6-218-010			COVER, BAT BOX	A
8Z-HM6-220-010			COVER, BAT +	A
8Z-HM6-223-010			FRAME ASSY, REAR	A
8Z-HM6-225-010			HLDR, BAT	A
8Z-HM6-228-010			HINGE ASSY, BAT	A
8Z-HM6-231-010			BAT-CONTACT, + BOX	A
8Z-HM6-232-010			BAT-CONTACT, - BOX	A
8Z-HM6-233-010			HANGER ASSY, REAR	A
8Z-HM6-234-010			JOINT, EJECT	A
8Z-HM6-235-010			SPR-T, EJECT	A
87-067-394-010			TAPPING SCREW, +1.4-2.5	A
87-067-430-010			VT1.4-5 BLK	A
87-067-556-010			SCREW 1.4-3SPL(B) N	A
87-067-745-010			V+1.4-1.1(1) CR	A
87-067-746-010			SCREW, M 1.4-2(H0.5)	A
87-353-507-310			VT2+1.4-3 CHROME	A
87-HM1-242-010			S-SCREW, 1.4-2.0CR	A
87-HM1-243-010			S-SCREW, 1.4-1.4CRNL	A
87-HM1-254-010			S-SCREW, 1.4-1.4CR	A
8Z-HM1-236-010			S-SCREW, +1.4-1.2 SWCH CR	A
8Z-HM4-611-010			PWB, FLEX JACK EX	A

ACCESSORIES / PACKAGE LIST - 1/1

NOTE: The characters in the suffix column indicate the part usage.

REF.NO	PARTS NO.	NO.	DESCRIPTION	SUFFIX
AHR		XX		A
		KANRI		
	8Z-HM6-901-010		IB,D (J)	
	8Z-HM6-903-010		IB,AE (EFS)	
	8Z-HM6-904-010		IB,AE (GID)	
	8Z-HM6-905-010		IB,AE (POHCZ)	
	8Z-HM6-906-010		IB,AHR (ECA)	A
	87-A90-312-010		PLUG,CONVERSION WTN-1157R1	A
	87-B30-066-110		CHARGER,RB-M01	
	87-B30-201-010		BAT,MHB-901	A
	87-B30-221-010		CASE,BATTERY	A
	87-B30-242-010		CHARGER,RB-M02E	
	87-B30-244-010		CHARGER,RB-M02K	
	87-B30-246-010		CHARGER,RB-M02HR	A
	87-B30-248-010		HEADPHONE,HP-M038	A
	87-B30-249-010		HEADPHONE,HP-M039	
	8Z-HK4-090-010		BOX,BAT ASSY SIL	A
	8Z-HM4-605-010		RC UNIT,RC-HX30	A
	8Z-HM4-951-010		STRAP,RC-HX30	
	8Z-HM6-953-010		STRAP,AM-ST40 ASSY	A

SCHEMATIC DIAGRAM



E. H. LIM
 SCHEMATIC DIAGRAM
 8Z HM6 610 01
 ZHM-6EX AM-ST40
 1999 01 11

サービス技術ニュース	
番号	連絡内容
G- -	
G- -	
G- -	

アイワ株式会社
AIWA CO.,LTD.

9420025

Tokyo Japan